

T2R10 Polyclonal Antibody

Catalog No :	YT4504
Reactivity :	Human
Applications :	WB;ELISA;IHC
Target :	T2R10
Fields :	>>Taste transduction
Gene Name :	TAS2R10
Protein Name :	Taste receptor type 2 member 10
Human Gene Id :	50839
Human Swiss Prot No :	Q9NYW0
Immunogen :	The antiserum was produced against synthesized peptide derived from human TAS2R10. AA range:122-171
Specificity :	T2R10 Polyclonal Antibody detects endogenous levels of T2R10 protein.
Formulation :	Liquid in PBS containing 50% glycerol, 0.5% BSA and 0.02% sodium azide.
Source :	Polyclonal, Rabbit,IgG
Dilution :	WB 1:500-2000;IHC 1:50-300; ELISA 2000-20000
Purification :	The antibody was affinity-purified from rabbit antiserum by affinity-chromatography using epitope-specific immunogen.
Concentration :	1 mg/ml
Storage Stability :	-15°C to -25°C/1 year(Do not lower than -25°C)
Observed Band :	35kD

Cell Pathway : Taste transduction;

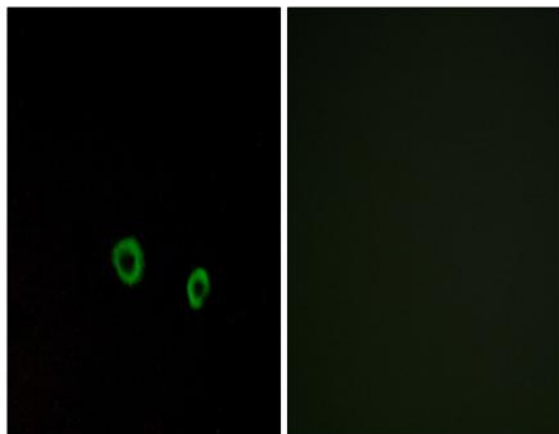
Background : This gene product belongs to the family of candidate taste receptors that are members of the G-protein-coupled receptor superfamily. These proteins are specifically expressed in the taste receptor cells of the tongue and palate epithelia. They are organized in the genome in clusters and are genetically linked to loci that influence bitter perception in mice and humans. In functional expression studies, they respond to bitter tastants. This gene maps to the taste receptor gene cluster on chromosome 12p13. [provided by RefSeq, Jul 2008],

Function : function:Gustducin-coupled strychnine receptor implicated in the perception of bitter compounds in the oral cavity and the gastrointestinal tract. Signals through PLCB2 and the calcium-regulated cation channel TRPM5.,miscellaneous:Several bitter taste receptors are expressed in a single taste receptor cell.,similarity:Belongs to the G-protein coupled receptor T2R family.,tissue specificity:Expressed in subsets of taste receptor cells of the tongue and palate epithelium and exclusively in gustducin-positive cells.,

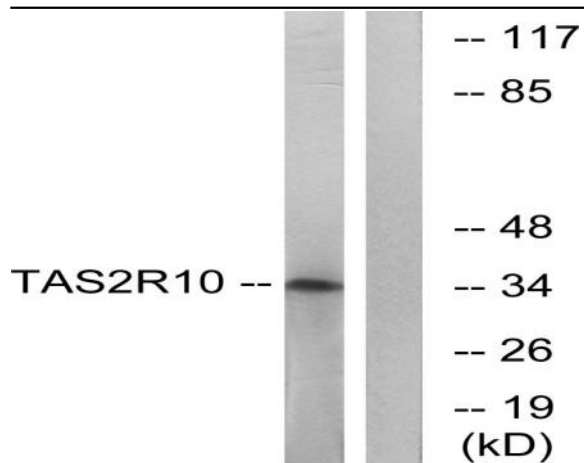
Subcellular Location : Membrane; Multi-pass membrane protein.

Expression : Expressed in subsets of taste receptor cells of the tongue and palate epithelium and exclusively in gustducin-positive cells.

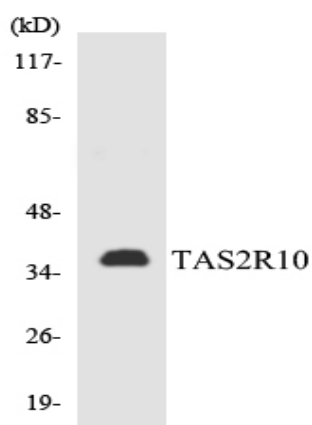
Products Images



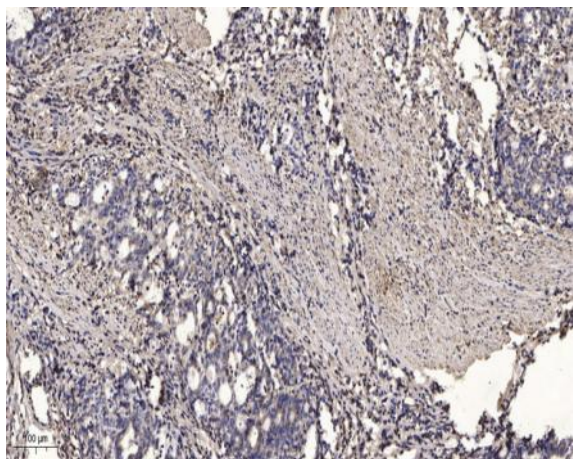
Immunofluorescence analysis of MCF7 cells, using TAS2R10 Antibody. The picture on the right is blocked with the synthesized peptide.



Western blot analysis of lysates from LOVO cells, using TAS2R10 Antibody. The lane on the right is blocked with the synthesized peptide.



Western blot analysis of the lysates from HepG2 cells using TAS2R10 antibody.



Immunohistochemical analysis of paraffin-embedded human Gastric adenocarcinoma. 1, Antibody was diluted at 1:200(4° overnight). 2, Tris-EDTA,pH9.0 was used for antigen retrieval. 3,Secondary antibody was diluted at 1:200(room temperature, 45min).