

**TRAPPC5 Polyclonal Antibody**

<b>Catalog No :</b>	YT4729
<b>Reactivity :</b>	Human;Mouse;Rat
<b>Applications :</b>	IHC;IF;ELISA
<b>Target :</b>	TRAPPC5
<b>Gene Name :</b>	TRAPPC5
<b>Protein Name :</b>	Trafficking protein particle complex subunit 5
<b>Human Gene Id :</b>	126003
<b>Human Swiss Prot No :</b>	Q8IUR0
<b>Mouse Gene Id :</b>	66682
<b>Mouse Swiss Prot No :</b>	Q9CQA1
<b>Immunogen :</b>	Synthesized peptide derived from the Internal region of human TRAPPC5.
<b>Specificity :</b>	TRAPPC5 Polyclonal Antibody detects endogenous levels of TRAPPC5 protein.
<b>Formulation :</b>	Liquid in PBS containing 50% glycerol, 0.5% BSA and 0.02% sodium azide.
<b>Source :</b>	Polyclonal, Rabbit,IgG
<b>Dilution :</b>	IHC 1:100 - 1:300. ELISA: 1:5000.. IF 1:50-200
<b>Purification :</b>	The antibody was affinity-purified from rabbit antiserum by affinity-chromatography using epitope-specific immunogen.
<b>Concentration :</b>	1 mg/ml
<b>Storage Stability :</b>	-15°C to -25°C/1 year(Do not lower than -25°C)

**Molecularweight :** 21kD

---

**Background :** function:May play a role in vesicular transport from endoplasmic reticulum to Golgi.,similarity:Belongs to the TRAPP small subunits family. BET3 subfamily.,subunit:Part of the multisubunit TRAPP (transport protein particle) complex.,

---

**Function :** function:May play a role in vesicular transport from endoplasmic reticulum to Golgi.,similarity:Belongs to the TRAPP small subunits family. BET3 subfamily.,subunit:Part of the multisubunit TRAPP (transport protein particle) complex.,

---

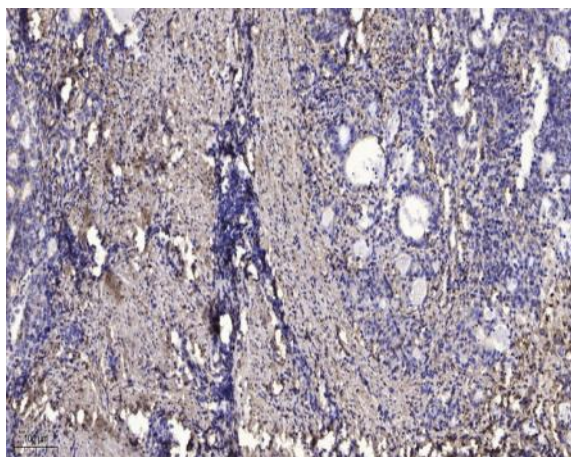
**Subcellular Location :** Golgi apparatus, cis-Golgi network . Endoplasmic reticulum .

---

**Expression :** Skin,

---

## Products Images



Immunohistochemical analysis of paraffin-embedded human Gastric adenocarcinoma. 1, Antibody was diluted at 1:200(4° overnight). 2, Tris-EDTA,pH9.0 was used for antigen retrieval. 3,Secondary antibody was diluted at 1:200(room temperature, 45min).