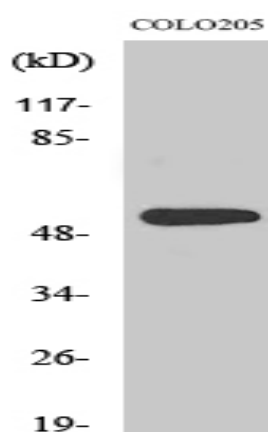


XPLN Polyclonal Antibody

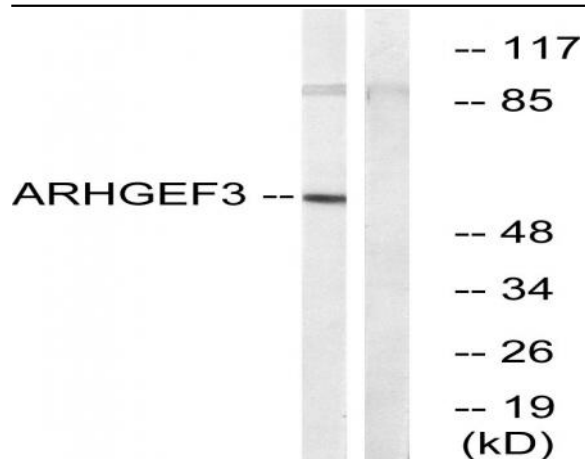
Catalog No :	YT4916
Reactivity :	Human;Mouse;Rat
Applications :	WB;IHC;IF;ELISA
Target :	XPLN
Gene Name :	ARHGEF3
Protein Name :	Rho guanine nucleotide exchange factor 3
Human Gene Id :	50650
Human Swiss Prot No :	Q9NR81
Mouse Gene Id :	71704
Mouse Swiss Prot No :	Q91X46
Immunogen :	The antiserum was produced against synthesized peptide derived from human ARHGEF3. AA range:456-505
Specificity :	XPLN Polyclonal Antibody detects endogenous levels of XPLN protein.
Formulation :	Liquid in PBS containing 50% glycerol, 0.5% BSA and 0.02% sodium azide.
Source :	Polyclonal, Rabbit,IgG
Dilution :	WB 1:500 - 1:2000.IHC:1:50-300 ELISA: 1:20000.. IF 1:50-200
Purification :	The antibody was affinity-purified from rabbit antiserum by affinity-chromatography using epitope-specific immunogen.
Concentration :	1 mg/ml
Storage Stability :	-15°C to -25°C/1 year(Do not lower than -25°C)

Observed Band :	55kD
Cell Pathway :	Regulation of Actin Dynamics; AMPK
Background :	<p>Rho-like GTPases are involved in a variety of cellular processes, and they are activated by binding GTP and inactivated by conversion of GTP to GDP by their intrinsic GTPase activity. Guanine nucleotide exchange factors (GEFs) accelerate the GTPase activity of Rho GTPases by catalyzing their release of bound GDP. This gene encodes a guanine nucleotide exchange factor, which specifically activates two members of the Rho GTPase family: RHOA and RHOB, both of which have a role in bone cell biology. It has been identified that genetic variation in this gene plays a role in the determination of bone mineral density (BMD), indicating the implication of this gene in postmenopausal osteoporosis. Alternatively spliced transcript variants encoding different isoforms have been found for this gene. [provided by RefSeq, Jul 2008],</p>
Function :	<p>function:Acts as guanine nucleotide exchange factor (GEF) for RhoA and RhoB GTPases.,similarity:Contains 1 DH (DBL-homology) domain.,similarity:Contains 1 PH domain.,subunit:Interacts with RHOA and RHOB.,tissue specificity:Widely expressed. Highest levels are found in adult brain and skeletal muscle. Lower levels are found in heart and kidney.,</p>
Subcellular Location :	Cytoplasm .
Expression :	Widely expressed. Highest levels are found in adult brain and skeletal muscle. Lower levels are found in heart and kidney.

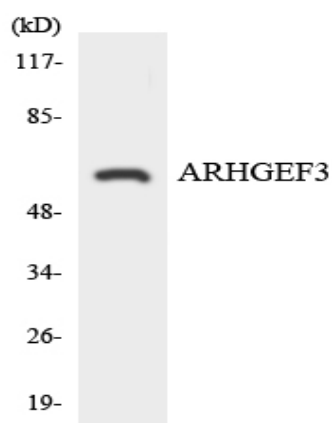
Products Images



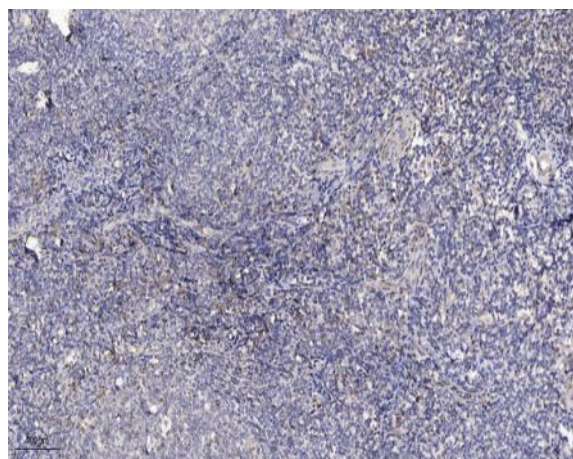
Western Blot analysis of various cells using XPLN Polyclonal Antibody. Secondary antibody(catalog#:RS0002) was diluted at 1:20000



Western blot analysis of lysates from COLO cells, using ARHGEF3 Antibody. The lane on the right is blocked with the synthesized peptide.



Western blot analysis of the lysates from HeLa cells using ARHGEF3 antibody.



Immunohistochemical analysis of paraffin-embedded human tonsil. 1, Antibody was diluted at 1:200(4° overnight). 2, Tris-EDTA,pH9.0 was used for antigen retrieval. 3,Secondary antibody was diluted at 1:200(room temperature, 30min).