

TSHZ2 Polyclonal Antibody

Catalog No :	YT4763
Reactivity :	Human;Mouse
Applications :	IHC;IF;ELISA
Target :	TSHZ2
Gene Name :	TSHZ2
Protein Name :	Teashirt homolog 2
Human Gene Id :	128553
Human Swiss Prot No :	Q9NRE2
Mouse Gene Id :	228911
Mouse Swiss Prot No :	Q68FE9
Immunogen :	The antiserum was produced against synthesized peptide derived from human TSH2. AA range:811-860
Specificity :	TSHZ2 Polyclonal Antibody detects endogenous levels of TSHZ2 protein.
Formulation :	Liquid in PBS containing 50% glycerol, 0.5% BSA and 0.02% sodium azide.
Source :	Polyclonal, Rabbit,IgG
Dilution :	IHC 1:100 - 1:300. IF 1:200 - 1:1000. ELISA: 1:20000. Not yet tested in other applications.
Purification :	The antibody was affinity-purified from rabbit antiserum by affinity-chromatography using epitope-specific immunogen.
Concentration :	1 mg/ml
Storage Stability :	-15°C to -25°C/1 year(Do not lower than -25°C)

Molecularweight : 115kD

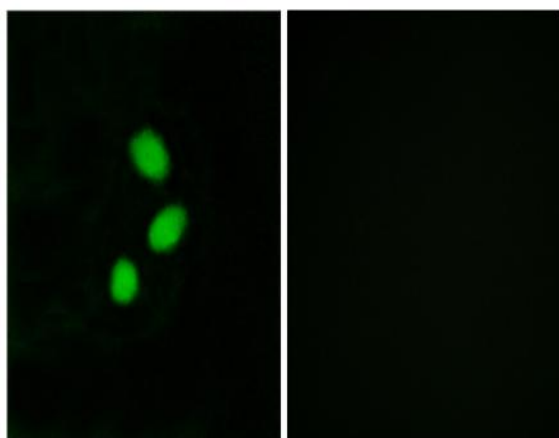
Background : function:Transcriptional regulator involved in developmental processes
 .,PTM:Sumoylated.,sequence caution:The sequence differs from that shown due translation of a 3'-UTR region.,similarity:Belongs to the teashirt C2H2-type zinc-finger protein family.,similarity:Contains 1 homeobox DNA-binding domain.,similarity:Contains 5 C2H2-type zinc fingers.,

Function : function:Transcriptional regulator involved in developmental processes
 .,PTM:Sumoylated.,sequence caution:The sequence differs from that shown due translation of a 3'-UTR region.,similarity:Belongs to the teashirt C2H2-type zinc-finger protein family.,similarity:Contains 1 homeobox DNA-binding domain.,similarity:Contains 5 C2H2-type zinc fingers.,

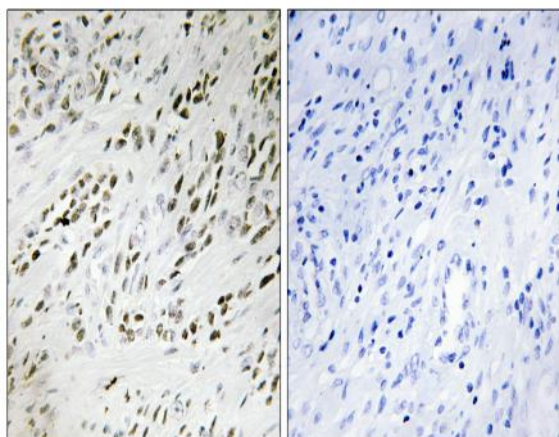
Subcellular Location : Nucleus .

Expression : Expressed in brain; strongly reduced in post-mortem elderly subjects with Alzheimer disease.

Products Images



Immunofluorescence analysis of MCF7 cells, using TSH2 Antibody. The picture on the right is blocked with the synthesized peptide.



Immunohistochemistry analysis of paraffin-embedded human prostate carcinoma tissue, using TSH2 Antibody. The picture on the right is blocked with the synthesized peptide.