

## TCFL5 Polyclonal Antibody

<b>Catalog No :</b>	YT4582
<b>Reactivity :</b>	Human;Mouse
<b>Applications :</b>	WB;IHC;IF;ELISA
<b>Target :</b>	TCFL5
<b>Gene Name :</b>	TCFL5
<b>Protein Name :</b>	Transcription factor-like 5 protein
<b>Human Gene Id :</b>	10732
<b>Human Swiss Prot No :</b>	Q9UL49
<b>Immunogen :</b>	The antiserum was produced against synthesized peptide derived from human TCFL5. AA range:311-360
<b>Specificity :</b>	TCFL5 Polyclonal Antibody detects endogenous levels of TCFL5 protein.
<b>Formulation :</b>	Liquid in PBS containing 50% glycerol, 0.5% BSA and 0.02% sodium azide.
<b>Source :</b>	Polyclonal, Rabbit,IgG
<b>Dilution :</b>	WB 1:500 - 1:2000. IHC 1:100 - 1:300. ELISA: 1:20000.. IF 1:50-200
<b>Purification :</b>	The antibody was affinity-purified from rabbit antiserum by affinity-chromatography using epitope-specific immunogen.
<b>Concentration :</b>	1 mg/ml
<b>Storage Stability :</b>	-15°C to -25°C/1 year(Do not lower than -25°C)
<b>Observed Band :</b>	48kD
<b>Cell Pathway :</b>	Stem cell pathway; Protein_Acetylation

**Background :**

developmental stage:Isoform 3 is specifically expressed in primary spermatocytes at the pachytene stage, but not those at leptoneuma stage. Not expressed in other testicular cells, including spermatogonia located in the basal compartment of the seminiferous tubule or spermatids.,disease:Antibodies against TCFL5 are present in sera from patients with Chagas' disease, an autoimmune disease caused by Trypanosoma cruzi. Two different epitopes that mimic Trypanosoma cruzi antigens have been identified: R1 and R3 epitopes, which are recognized by T- and B-cells, respectively.,function:Putative transcription factor. Isoform 3 may play a role in early spermatogenesis.,similarity:Contains 1 basic helix-loop-helix (bHLH) domain.,subunit:Efficient DNA binding requires dimerization with another bHLH protein.,tissue specificity:Isoform 3 is testis specific. Isoform 2 is pancreas specific.,

**Function :**

developmental stage:Isoform 3 is specifically expressed in primary spermatocytes at the pachytene stage, but not those at leptoneuma stage. Not expressed in other testicular cells, including spermatogonia located in the basal compartment of the seminiferous tubule or spermatids.,disease:Antibodies against TCFL5 are present in sera from patients with Chagas' disease, an autoimmune disease caused by Trypanosoma cruzi. Two different epitopes that mimic Trypanosoma cruzi antigens have been identified: R1 and R3 epitopes, which are recognized by T- and B-cells, respectively.,function:Putative transcription factor. Isoform 3 may play a role in early spermatogenesis.,similarity:Contains 1 basic helix-loop-helix (bHLH) domain.,subunit:Efficient DNA binding requires dimerization with another bHLH protein.,tissue specificity:Isoform 3 is testis specific. Isoform 2 is pancreas specific.,

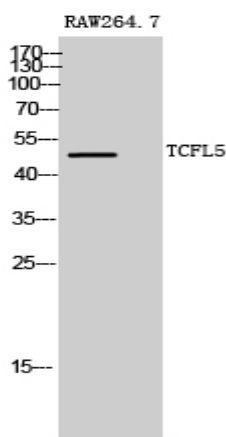
**Subcellular Location :**

Nucleus .

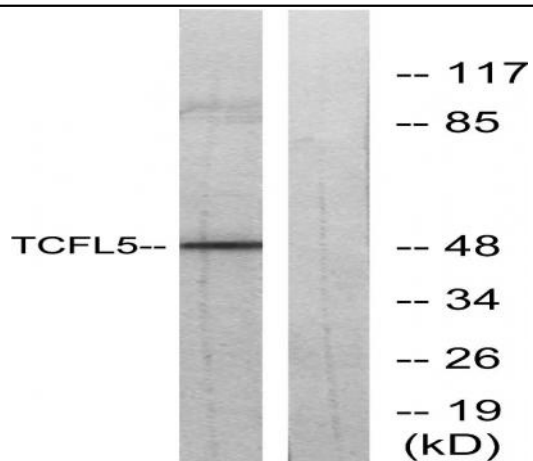
**Expression :**

Isoform 3 is testis specific. Isoform 2 is pancreas specific.

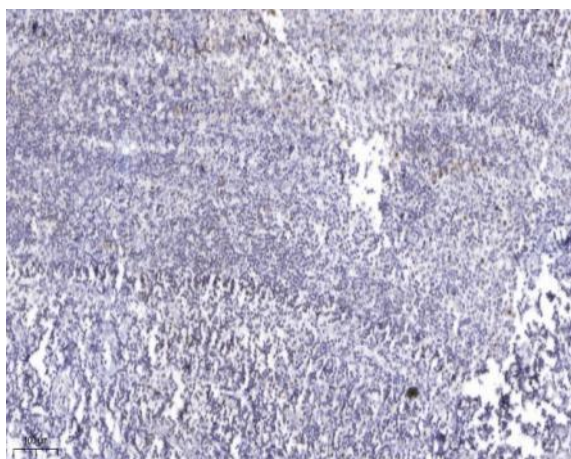
**Products Images**



Western Blot analysis of RAW264.7 cells using TCFL5 Polyclonal Antibody cells nucleus extracted by Minute TM Cytoplasmic and Nuclear Fractionation kit (SC-003, Invent biotech, MN, USA).



Western blot analysis of lysates from RAW264.7 cells, using TCFL5 Antibody. The lane on the right is blocked with the synthesized peptide.



Immunohistochemical analysis of paraffin-embedded human tonsil. 1, Antibody was diluted at 1:200(4° overnight). 2, Tris-EDTA,pH9.0 was used for antigen retrieval. 3,Secondary antibody was diluted at 1:200(room temperature, 45min).