

TCP-1  $\theta$  Polyclonal Antibody

<b>Catalog No :</b>	YT4587
<b>Reactivity :</b>	Human;Mouse
<b>Applications :</b>	WB;ELISA
<b>Target :</b>	TCP-1 $\theta$
<b>Gene Name :</b>	CCT8
<b>Protein Name :</b>	T-complex protein 1 subunit theta
<b>Human Gene Id :</b>	10694
<b>Human Swiss Prot No :</b>	P50990
<b>Mouse Gene Id :</b>	12469
<b>Mouse Swiss Prot No :</b>	P42932
<b>Immunogen :</b>	The antiserum was produced against synthesized peptide derived from human CCT8. AA range:361-410
<b>Specificity :</b>	TCP-1 $\theta$ Polyclonal Antibody detects endogenous levels of TCP-1 $\theta$ protein.
<b>Formulation :</b>	Liquid in PBS containing 50% glycerol, 0.5% BSA and 0.02% sodium azide.
<b>Source :</b>	Polyclonal, Rabbit,IgG
<b>Dilution :</b>	WB 1:500 - 1:2000. ELISA: 1:5000. Not yet tested in other applications.
<b>Purification :</b>	The antibody was affinity-purified from rabbit antiserum by affinity-chromatography using epitope-specific immunogen.
<b>Concentration :</b>	1 mg/ml
<b>Storage Stability :</b>	-15°C to -25°C/1 year(Do not lower than -25°C)

**Observed Band :** 60kD

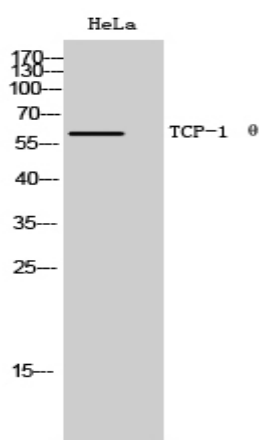
**Background :** This gene encodes the theta subunit of the CCT chaperonin, which is abundant in the eukaryotic cytosol and may be involved in the transport and assembly of newly synthesized proteins. Alternative splicing results in multiple transcript variants of this gene. A pseudogene related to this gene is located on chromosome 1. [provided by RefSeq, Sep 2013],

**Function :** function:Molecular chaperone; assist the folding of proteins upon ATP hydrolysis. Known to play a role, in vitro, in the folding of actin and tubulin.,similarity:Belongs to the TCP-1 chaperonin family.,subunit:Heterooligomeric complex of about 850 to 900 kDa that forms two stacked rings, 12 to 16 nm in diameter. Interacts with PACRG.,

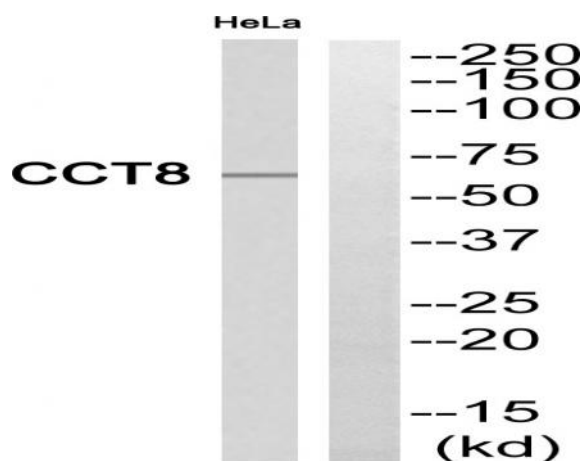
**Subcellular Location :** Cytoplasm . Cytoplasm, cytoskeleton, microtubule organizing center, centrosome . Cytoplasm, cytoskeleton, cilium basal body .

**Expression :** Adipose tissue,B-cell lymphoma,Bone marrow,Chondrosarcoma,Epitheliu

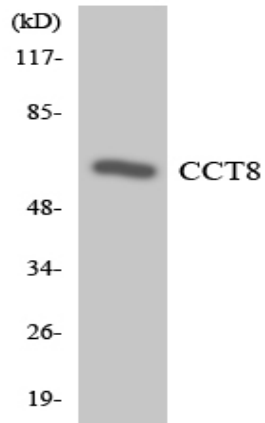
## Products Images



Western Blot analysis of HeLa cells using TCP-1 θ Polyclonal Antibody



Western blot analysis of CCT8 Antibody. The lane on the right is blocked with the CCT8 peptide.



Western blot analysis of the lysates from HeLa cells using CCT8 antibody.