

UBE2T Polyclonal Antibody

Catalog No :	YT4800
Reactivity :	Human;Mouse
Applications :	WB;ELISA
Target :	UBE2T
Fields :	>>Fanconi anemia pathway
Gene Name :	UBE2T
Protein Name :	Ubiquitin-conjugating enzyme E2 T
Human Gene Id :	29089
Human Swiss Prot No :	Q9NPD8
Mouse Gene Id :	67196
Mouse Swiss Prot No :	Q9CQ37
Immunogen :	The antiserum was produced against synthesized peptide derived from human UBE2T. AA range:121-170
Specificity :	UBE2T Polyclonal Antibody detects endogenous levels of UBE2T protein.
Formulation :	Liquid in PBS containing 50% glycerol, 0.5% BSA and 0.02% sodium azide.
Source :	Polyclonal, Rabbit,IgG
Dilution :	WB 1:500 - 1:2000. ELISA: 1:10000. Not yet tested in other applications.
Purification :	The antibody was affinity-purified from rabbit antiserum by affinity-chromatography using epitope-specific immunogen.
Concentration :	1 mg/ml

Storage Stability : -15°C to -25°C/1 year(Do not lower than -25°C)

Observed Band : 22kD

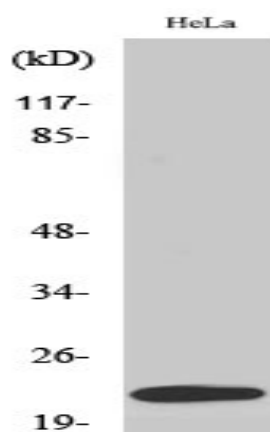
Background : The protein encoded by this gene catalyzes the covalent attachment of ubiquitin to protein substrates. Defects in this gene have been associated with Fanconi anemia of complementation group T. Two transcript variants encoding different isoforms have been found for this gene. [provided by RefSeq, Jul 2015],

Function : catalytic activity:ATP + ubiquitin + protein lysine = AMP + diphosphate + protein N-ubiquityllysine.,function:Catalyzes the covalent attachment of ubiquitin to other proteins.,pathway:Protein modification; protein ubiquitination.,similarity:Belongs to the ubiquitin-conjugating enzyme family.,

Subcellular Location : Nucleus . Accumulates to chromatin.

Expression : Adrenal gland,Blood,Carcinoma,Lung,

Products Images



Western Blot analysis of various cells using UBE2T Polyclonal Antibody. Secondary antibody(catalog#:RS0002) was diluted at 1:20000