

Cyclophilin B Monoclonal Antibody(1B3)

| | |
|------------------------------|---|
| Catalog No : | YM3514 |
| Reactivity : | Human;Rat;Mouse |
| Applications : | WB;IHC;IF |
| Target : | Cyclophilin B |
| Gene Name : | PPIB |
| Protein Name : | Peptidyl-prolyl cis-trans isomerase B (PPIase B) (EC 5.2.1.8) (CYP-S1) (Cyclophilin B) (Rotamase B) (S-cyclophilin) (SCYLP) |
| Human Gene Id : | 5479 |
| Human Swiss Prot No : | P23284 |
| Mouse Swiss Prot No : | P24369 |
| Rat Swiss Prot No : | P24368 |
| Immunogen : | Synthetic Peptide of Cyclophilin B |
| Specificity : | Cyclophilin B protein detects endogenous levels of Cyclophilin B |
| Formulation : | Liquid in PBS containing 50% glycerol, 0.5% BSA and 0.02% sodium azide. |
| Source : | Monoclonal, Mouse |
| Dilution : | WB 1:1000-2000, IHC 1:100-200. IF 1:50-200 |
| Purification : | The antibody was affinity-purified from mouse ascites by affinity-chromatography using specific immunogen. |
| Concentration : | 1 mg/ml |
| Storage Stability : | -15°C to -25°C/1 year(Do not lower than -25°C) |

Observed Band : 21kD

Background : The protein encoded by this gene is a cyclosporine-binding protein and is mainly located within the endoplasmic reticulum. It is associated with the secretory pathway and released in biological fluids. This protein can bind to cells derived from T- and B-lymphocytes, and may regulate cyclosporine A-mediated immunosuppression. Variants have been identified in this protein that give rise to recessive forms of osteogenesis imperfecta. [provided by RefSeq, Oct 2009],

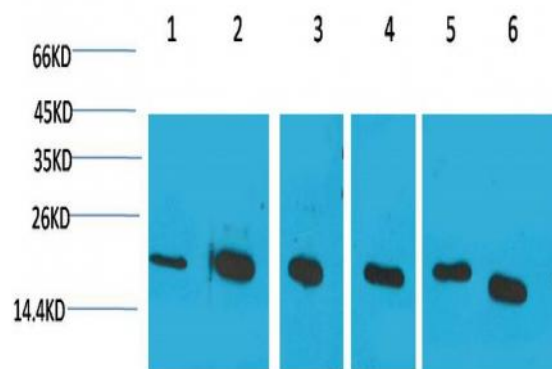
Function : catalytic activity:Peptidylproline (omega=180) = peptidylproline (omega=0).,caution:It is uncertain whether Met-1 or Met-9 is the initiator.,enzyme regulation:Cyclosporin A (CsA) inhibits CYPB.,function:PPLases accelerate the folding of proteins. It catalyzes the cis-trans isomerization of proline imidic peptide bonds in oligopeptides.,similarity:Belongs to the cyclophilin-type PPLase family. PPLase B subfamily.,similarity:Contains 1 PPLase cyclophilin-type domain.,subcellular location:Identified by mass spectrometry in melanosome fractions from stage I to stage IV.,

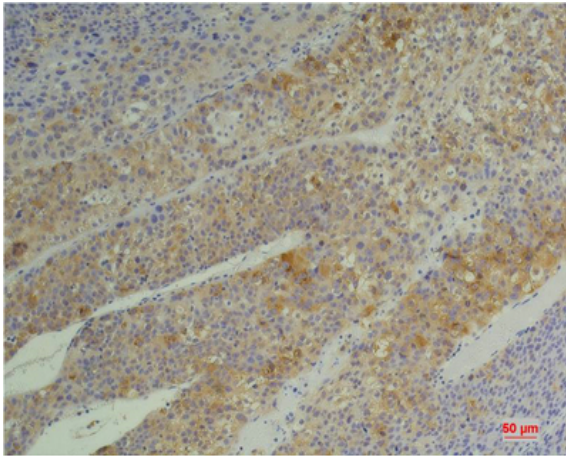
Subcellular Location : Virion . (Microbial infection).; Endoplasmic reticulum lumen . Melanosome . Identified by mass spectrometry in melanosome fractions from stage I to stage IV (PubMed:17081065). .

Expression : Brain,Fetal brain cortex,Prostate,Skin,

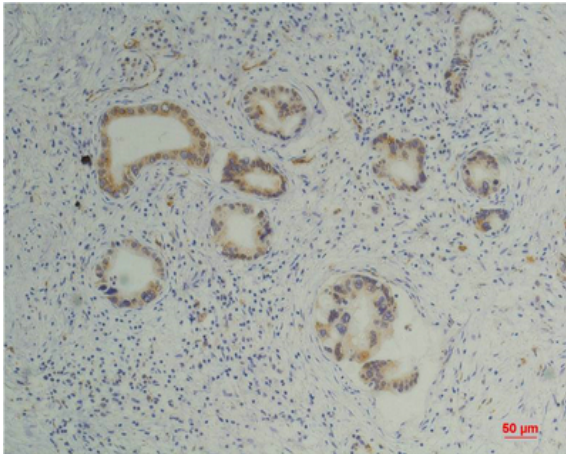
Products Images

Western blot analysis of 1) Hela, 2) Jurkat, 3) 293T, 4) Rat Liver Tissue, 5) 3T3, 6) HepG2 with Cyclophilin B Mouse mAb diluted at 1:2,000.





Immunohistochemical analysis of paraffin-embedded Human Hepatocarcinoma using Cyclophilin B Mouse mAb diluted at 1:200.



Immunohistochemical analysis of paraffin-embedded Human Pancreatic Carcinoma using Cyclophilin B Mouse mAb diluted at 1:200.