

## TFIIIC110 Polyclonal Antibody

|                              |   |
|------------------------------|---|
| <b>Catalog No :</b>          | YT4622  |
| <b>Reactivity :</b>          | Human;Mouse   |
| <b>Applications :</b>        | WB;IHC;IF;ELISA   |
| <b>Target :</b>              | TFIIIC110   |
| <b>Gene Name :</b>           | GTF3C2  |
| <b>Protein Name :</b>        | General transcription factor 3C polypeptide 2   |
| <b>Human Gene Id :</b>       | 2976  |
| <b>Human Swiss Prot No :</b> | Q8WUA4  |
| <b>Mouse Swiss Prot No :</b> | Q8BL74  |
| <b>Immunogen :</b>           | The antiserum was produced against synthesized peptide derived from human TF3C2. AA range:71-120                      |
| <b>Specificity :</b>         | TFIIIC110 Polyclonal Antibody detects endogenous levels of TFIIIC110 protein.   |
| <b>Formulation :</b>         | Liquid in PBS containing 50% glycerol, 0.5% BSA and 0.02% sodium azide.   |
| <b>Source :</b>              | Polyclonal, Rabbit,IgG  |
| <b>Dilution :</b>            | WB 1:500 - 1:2000. IHC 1:100 - 1:300. ELISA: 1:20000.. IF 1:50-200  |
| <b>Purification :</b>        | The antibody was affinity-purified from rabbit antiserum by affinity-chromatography using epitope-specific immunogen. |
| <b>Concentration :</b>       | 1 mg/ml   |
| <b>Storage Stability :</b>   | -15°C to -25°C/1 year(Do not lower than -25°C)  |
| <b>Observed Band :</b>       | 100kD   |

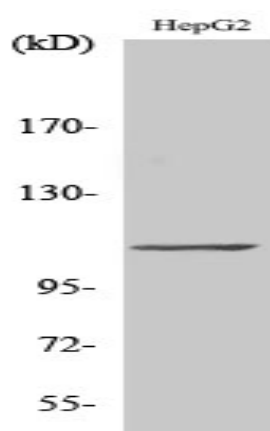
**Background :** function:Required for RNA polymerase III-mediated transcription. Component of TFIIIC that initiates transcription complex assembly on tRNA and is required for transcription of 5S rRNA and other stable nuclear and cytoplasmic RNAs. May play a direct role in stabilizing interactions of TFIIIC2 with TFIIIC1.,similarity:Contains 4 WD repeats.,subunit:Part of the TFIIIC subcomplex TFIIIC2, consisting of six subunits, GTF3C1, GTF3C2, GTF3C3, GTF3C4, GTF3C5 and GTF3C6.,

**Function :** function:Required for RNA polymerase III-mediated transcription. Component of TFIIIC that initiates transcription complex assembly on tRNA and is required for transcription of 5S rRNA and other stable nuclear and cytoplasmic RNAs. May play a direct role in stabilizing interactions of TFIIIC2 with TFIIIC1.,similarity:Contains 4 WD repeats.,subunit:Part of the TFIIIC subcomplex TFIIIC2, consisting of six subunits, GTF3C1, GTF3C2, GTF3C3, GTF3C4, GTF3C5 and GTF3C6.,

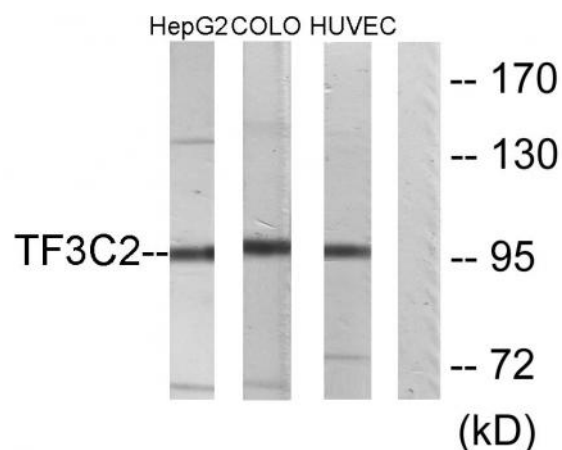
**Subcellular Location :** Nucleus.

**Expression :** Bone marrow,Brain,Colon,Epithelium,

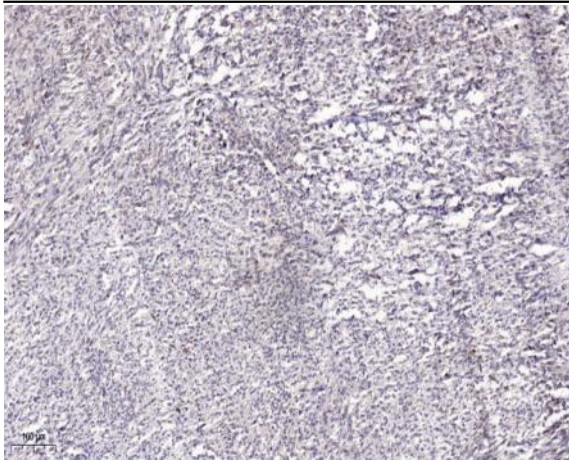
## Products Images



Western Blot analysis of various cells using TFIIIC110 Polyclonal Antibody



Western blot analysis of lysates from HepG2, COLO205, and HUVEC cells, using TF3C2 Antibody. The lane on the right is blocked with the synthesized peptide.



Immunohistochemical analysis of paraffin-embedded human Small intestinal stromal tumor. 1, Tris-EDTA,pH9.0 was used for antigen retrieval. 2 Antibody was diluted at 1:200(4° overnight).3,Secondary antibody was diluted at 1:200(room temperature, 45min).