

UMP-CMP Kinase Polyclonal Antibody

Catalog No :	YT4821
Reactivity :	Human;Mouse;Rat
Applications :	WB;IHC;IF;ELISA
Target :	UMP-CMP Kinase
Fields :	>>Pyrimidine metabolism;>>Drug metabolism - other enzymes;>>Metabolic pathways;>>Nucleotide metabolism;>>Biosynthesis of cofactors
Gene Name :	CMPK1
Protein Name :	UMP-CMP kinase
Human Gene Id :	51727
Human Swiss Prot No :	P30085
Mouse Gene Id :	66588
Mouse Swiss Prot No :	Q9DBP5
Rat Gene Id :	298410
Rat Swiss Prot No :	Q4KM73
Immunogen :	The antiserum was produced against synthesized peptide derived from human KCY. AA range:1-50
Specificity :	UMP-CMP Kinase Polyclonal Antibody detects endogenous levels of UMP-CMP Kinase protein.
Formulation :	Liquid in PBS containing 50% glycerol, 0.5% BSA and 0.02% sodium azide.
Source :	Polyclonal, Rabbit,IgG
Dilution :	WB 1:500 - 1:2000. IHC 1:100 - 1:300. IF 1:200 - 1:1000. ELISA: 1:10000. Not

yet tested in other applications.

Purification : The antibody was affinity-purified from rabbit antiserum by affinity-chromatography using epitope-specific immunogen.

Concentration : 1 mg/ml

Storage Stability : -15°C to -25°C/1 year(Do not lower than -25°C)

Observed Band : 22kD

Cell Pathway : Pyrimidine metabolism;

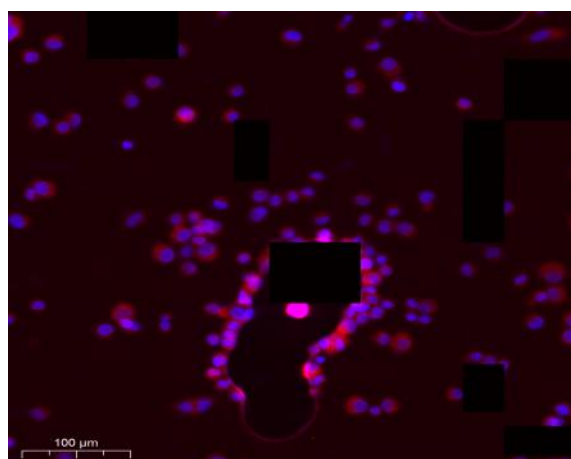
Background : This gene encodes one of the enzymes required for cellular nucleic acid biosynthesis. This enzyme catalyzes the transfer of a phosphate group from ATP to CMP, UMP, or dCMP, to form the corresponding diphosphate nucleotide. Alternate splicing results in both coding and non-coding transcript variants. [provided by RefSeq, Feb 2012],

Function : catalytic activity:ATP + (d)CMP = ADP + (d)CDP.,cofactor:Magnesium.,function:Catalyzes specific phosphoryl transfer from ATP to UMP and CMP.,similarity:Belongs to the adenylate kinase family.,subcellular location:Mainly nuclear.,tissue specificity:Ubiquitously expressed.,

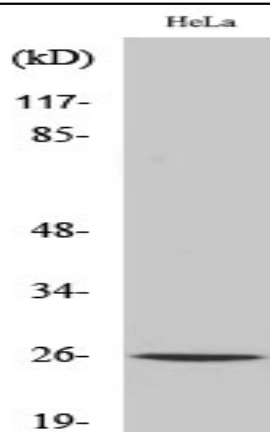
Subcellular Location : Nucleus . Cytoplasm . Predominantly cytoplasmic, less than 15% nuclear. .

Expression : Ubiquitously expressed.

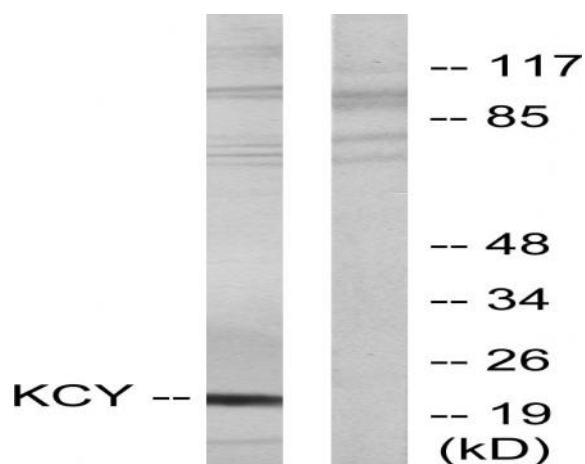
Products Images



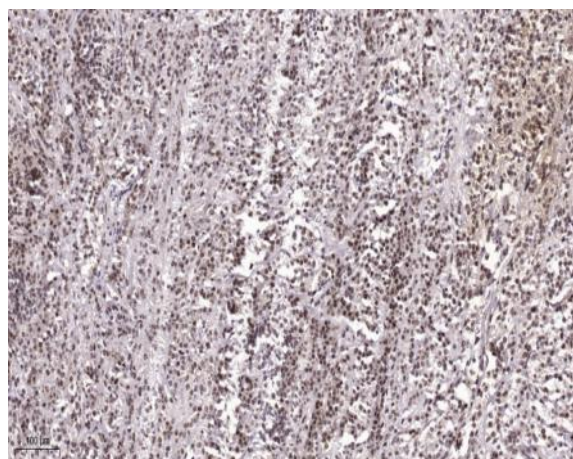
Immunofluorescence analysis of SiHa cell. 1,primary Antibody was diluted at 1:100(4°C overnight). 2, Goat Anti Rabbit IgG (H&L) - AFuor 594 Secondary antibody(catalog No: RS3611) was diluted at 1:500(room temperature, 50min).



Western Blot analysis of various cells using UMP-CMP Kinase Polyclonal Antibody diluted at 1:500. Secondary antibody(catalog#:RS0002) was diluted at 1:20000



Western blot analysis of lysates from HeLa cells, using KCY Antibody. The lane on the right is blocked with the synthesized peptide.



Immunohistochemical analysis of paraffin-embedded human Colon cancer. 1, Antibody was diluted at 1:200(4° overnight). 2, Tris-EDTA,pH9.0 was used for antigen retrieval. 3,Secondary antibody was diluted at 1:200(room temperature, 45min).