

USP15 Polyclonal Antibody

Catalog No :	YT4830
Reactivity :	Human;Mouse;Rat
Applications :	WB;ELISA
Target :	USP15
Fields :	>>Mitophagy - animal
Gene Name :	USP15
Protein Name :	Ubiquitin carboxyl-terminal hydrolase 15
Human Gene Id :	9958
Human Swiss Prot No :	Q9Y4E8
Mouse Gene Id :	14479
Mouse Swiss Prot No :	Q8R5H1
Rat Swiss Prot No :	Q9R085
Immunogen :	The antiserum was produced against synthesized peptide derived from human USP15. AA range:81-130
Specificity :	USP15 Polyclonal Antibody detects endogenous levels of USP15 protein.
Formulation :	Liquid in PBS containing 50% glycerol, 0.5% BSA and 0.02% sodium azide.
Source :	Polyclonal, Rabbit,IgG
Dilution :	WB 1:500 - 1:2000. ELISA: 1:10000. Not yet tested in other applications.
Purification :	The antibody was affinity-purified from rabbit antiserum by affinity-chromatography using epitope-specific immunogen.

Concentration : 1 mg/ml

Storage Stability : -15°C to -25°C/1 year(Do not lower than -25°C)

Observed Band : 115kD

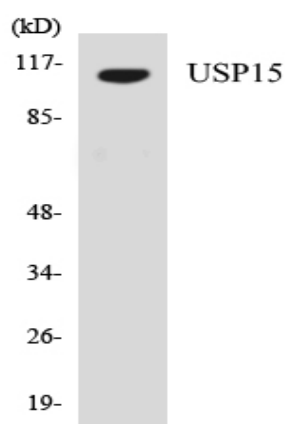
Background : This gene encodes a member of the ubiquitin specific protease (USP) family of deubiquitinating enzymes. USP enzymes play critical roles in ubiquitin-dependent processes through polyubiquitin chain disassembly and hydrolysis of ubiquitin-substrate bonds. The encoded protein associates with the COP9 signalosome, and also plays a role in transforming growth factor beta signalling through deubiquitination of receptor-activated SMAD transcription factors. Alternatively spliced transcript variants encoding multiple isoforms have been observed for this gene, and a pseudogene of this gene is located on the long arm of chromosome 2. [provided by RefSeq, Nov 2011],

Function : catalytic activity:Ubiquitin C-terminal thioester + H(2)O = ubiquitin + a thiol.,similarity:Belongs to the peptidase C19 family.,similarity:Contains 1 DUSP domain.,tissue specificity:Expressed in skeletal muscle, kidney, heart, placenta, liver, thymus, lung, and ovary, with little or no expression in other tissues.,

Subcellular Location : Cytoplasm . Nucleus . Mitochondrion .

Expression : Expressed in skeletal muscle, kidney, heart, placenta, liver, thymus, lung, and ovary, with little or no expression in other tissues.

Products Images



Western blot analysis of the lysates from HeLa cells using USP15 antibody.