

TGase2 Polyclonal Antibody

Catalog No :	YT4625
Reactivity :	Human;Mouse
Applications :	WB;IHC;IF;ELISA
Target :	TGase2
Fields :	>>Huntington disease
Gene Name :	TGM2
Protein Name :	Protein-glutamine gamma-glutamyltransferase 2
Human Gene Id :	7052
Human Swiss Prot No :	P21980
Mouse Gene Id :	21817
Mouse Swiss Prot No :	P21981
Immunogen :	The antiserum was produced against synthesized peptide derived from human Transglutaminase 2. AA range:1-50
Specificity :	TGase2 Polyclonal Antibody detects endogenous levels of TGase2 protein.
Formulation :	Liquid in PBS containing 50% glycerol, 0.5% BSA and 0.02% sodium azide.
Source :	Polyclonal, Rabbit,IgG
Dilution :	WB 1:500 - 1:2000. IHC 1:100 - 1:300. ELISA: 1:20000.. IF 1:50-200
Purification :	The antibody was affinity-purified from rabbit antiserum by affinity-chromatography using epitope-specific immunogen.
Concentration :	1 mg/ml

Storage Stability : -15°C to -25°C/1 year(Do not lower than -25°C)

Observed Band : 90kD

Cell Pathway : Huntington's disease;

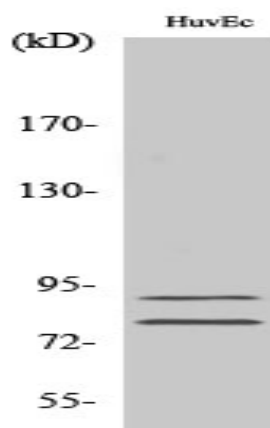
Background : Transglutaminases are enzymes that catalyze the crosslinking of proteins by epsilon-gamma glutamyl lysine isopeptide bonds. While the primary structure of transglutaminases is not conserved, they all have the same amino acid sequence at their active sites and their activity is calcium-dependent. The protein encoded by this gene acts as a monomer, is induced by retinoic acid, and appears to be involved in apoptosis. Finally, the encoded protein is the autoantigen implicated in celiac disease. Two transcript variants encoding different isoforms have been found for this gene. [provided by RefSeq, Jul 2008],

Function : catalytic activity:Protein glutamine + alkylamine = protein N(5)-alkylglutamine + NH(3).,cofactor:Binds 1 calcium ion per subunit.,disease:Defects in TGM2 are involved in early-onset diabetes type 2.,function:Catalyzes the cross-linking of proteins and the conjugation of polyamines to proteins.,induction:By retinoic acid.,online information:Tissue transglutaminase entry,similarity:Belongs to the transglutaminase superfamily. Transglutaminase family.,subunit:Monomer.,

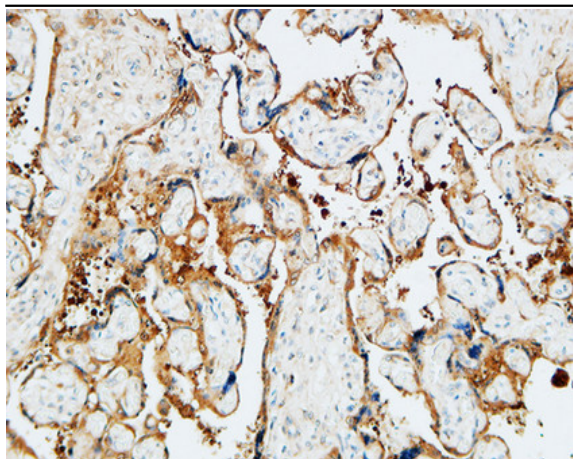
Subcellular Location : Cytoplasm, cytosol . Nucleus . Chromosome . Secreted, extracellular space, extracellular matrix . Cell membrane . Mitochondrion . Mainly localizes to the cytosol (PubMed:9575137). Present at much lower level in the nucleus and chromatin (PubMed:9575137). Also secreted via a non-classical secretion pathway to the extracellular matrix (PubMed:27270573). .; [Isoform 2]: Cytoplasm, perinuclear region .

Expression : Brain,Colon adenocarcinoma,Endothelial cell,Kidney,Liver,Lymph node,Ovarian carcino

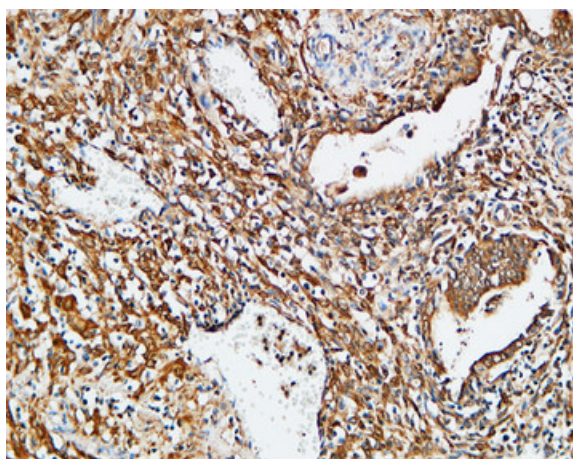
Products Images



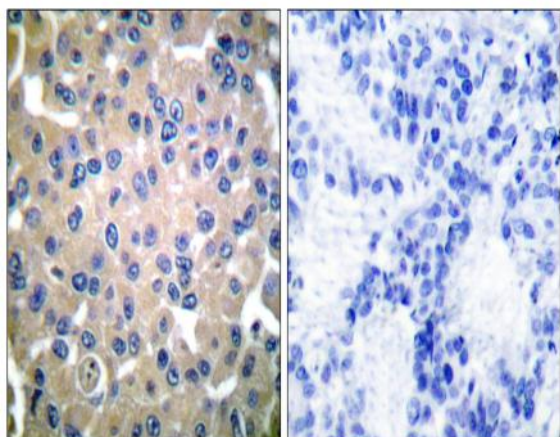
Western Blot analysis of various cells using TGase2 Polyclonal Antibody



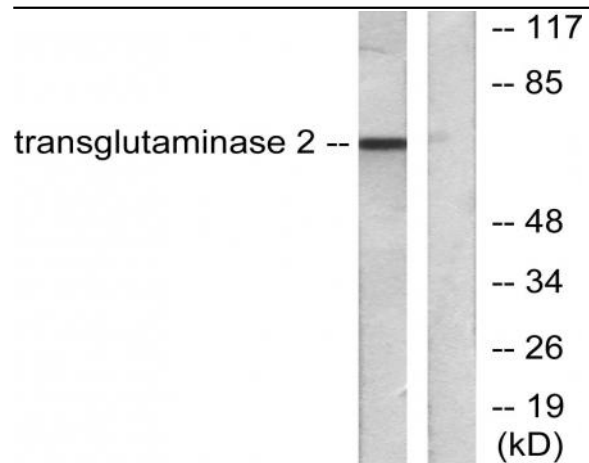
Immunohistochemical analysis of paraffin-embedded Human placenta. 1, Antibody was diluted at 1:200(4° overnight). 2, High-pressure and temperature EDTA, pH8.0 was used for antigen retrieval. 3,Secondary antibody was diluted at 1:200(room temperature, 30min).



Immunohistochemical analysis of paraffin-embedded Human Endometrium. 1, Antibody was diluted at 1:200(4° overnight). 2, High-pressure and temperature EDTA, pH8.0 was used for antigen retrieval. 3,Secondary antibody was diluted at 1:200(room temperature, 30min).



Immunohistochemistry analysis of paraffin-embedded human breast carcinoma tissue, using Transglutaminase 2 Antibody. The picture on the right is blocked with the synthesized peptide.



Western blot analysis of lysates from HUVEC cells, using Transglutaminase 2 Antibody. The lane on the right is blocked with the synthesized peptide.