

## TGF $\alpha$ Polyclonal Antibody

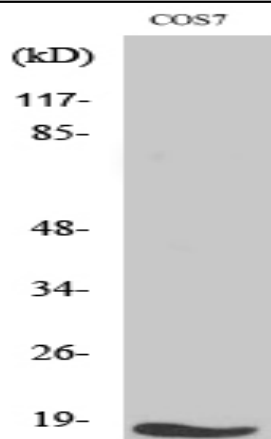
<b>Catalog No :</b>	YT4626
<b>Reactivity :</b>	Human;Mouse;Rat;Monkey
<b>Applications :</b>	WB;IHC;IF;ELISA
<b>Target :</b>	TGFA
<b>Fields :</b>	>>EGFR tyrosine kinase inhibitor resistance;>>MAPK signaling pathway;>>ErbB signaling pathway;>>Ras signaling pathway;>>PI3K-Akt signaling pathway;>>Estrogen signaling pathway;>>Pathways in cancer;>>Colorectal cancer;>>Renal cell carcinoma;>>Pancreatic cancer;>>Glioma;>>Prostate cancer;>>Non-small cell lung cancer;>>Hepatocellular carcinoma
<b>Gene Name :</b>	TGFA
<b>Protein Name :</b>	Protransforming growth factor alpha
<b>Human Gene Id :</b>	7039
<b>Human Swiss Prot No :</b>	P01135
<b>Mouse Gene Id :</b>	21802
<b>Mouse Swiss Prot No :</b>	P48030
<b>Rat Gene Id :</b>	24827
<b>Rat Swiss Prot No :</b>	P01134
<b>Immunogen :</b>	The antiserum was produced against synthesized peptide derived from human TGF alpha. AA range:111-160
<b>Specificity :</b>	TGF $\alpha$ Polyclonal Antibody detects endogenous levels of TGF $\alpha$ protein.
<b>Formulation :</b>	Liquid in PBS containing 50% glycerol, 0.5% BSA and 0.02% sodium azide.

---

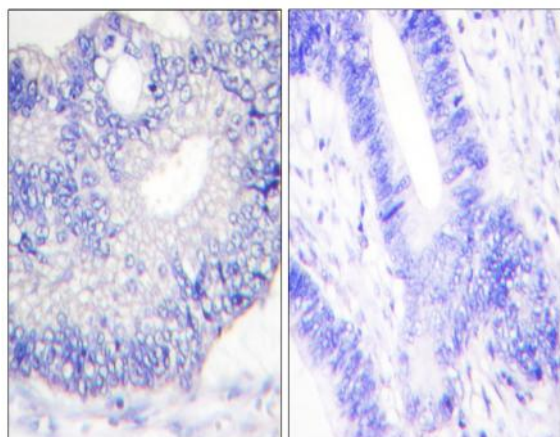
<b>Source :</b>	Polyclonal, Rabbit,IgG
<b>Dilution :</b>	WB 1:500 - 1:2000. IHC 1:100 - 1:300. ELISA: 1:10000.. IF 1:50-200
<b>Purification :</b>	The antibody was affinity-purified from rabbit antiserum by affinity-chromatography using epitope-specific immunogen.
<b>Concentration :</b>	1 mg/ml
<b>Storage Stability :</b>	-15°C to -25°C/1 year(Do not lower than -25°C)
<b>Observed Band :</b>	10kD
<b>Cell Pathway :</b>	ErbB_HER;Pathways in cancer;Renal cell carcinoma;Pancreatic cancer;Glioma;Prostate cancer;Non-small cell lung cancer;
<b>Background :</b>	This gene encodes a growth factor that is a ligand for the epidermal growth factor receptor, which activates a signaling pathway for cell proliferation, differentiation and development. This protein may act as either a transmembrane-bound ligand or a soluble ligand. This gene has been associated with many types of cancers, and it may also be involved in some cases of cleft lip/palate. Alternatively spliced transcript variants encoding different isoforms have been found for this gene. [provided by RefSeq, Sep 2011],
<b>Function :</b>	function:TGF alpha is a mitogenic polypeptide that is able to bind to the EGF receptor and to act synergistically with TGF beta to promote anchorage-independent cell proliferation in soft agar.,similarity:Contains 1 EGF-like domain.,subunit:Interacts with the PDZ domains of MAGI3, SDCBP and SNTA1. The interaction with SDCBP, is required for the targeting to the cell surface. In the endoplasmic reticulum, in its immature form (i.e. with a prosegment and lacking full N-glycosylation), interacts with CNIH. In the Golgi apparatus, may form a complex with CNIH and GORASP2.,
<b>Subcellular Location :</b>	[Transforming growth factor alpha]: Secreted, extracellular space.; [Protransforming growth factor alpha]: Cell membrane; Single-pass type I membrane protein.
<b>Expression :</b>	Isoform 1, isoform 3 and isoform 4 are expressed in keratinocytes and tumor-derived cell lines.

---

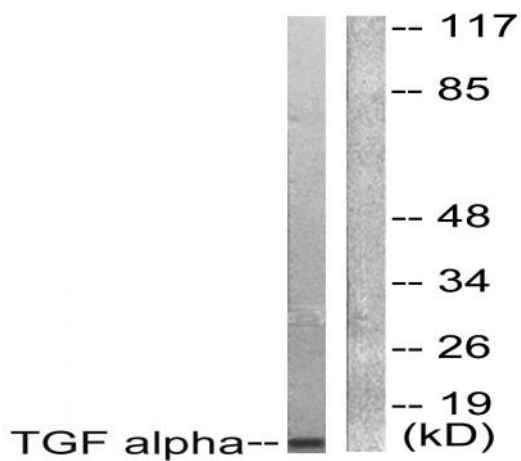
## Products Images



Western Blot analysis of various cells using TGF $\alpha$  Polyclonal Antibody



Immunohistochemistry analysis of paraffin-embedded human colon carcinoma tissue, using TGF alpha Antibody. The picture on the right is blocked with the synthesized peptide.



Western blot analysis of lysates from COS7 cells, using TGF alpha Antibody. The lane on the right is blocked with the synthesized peptide.