

## USP24 Polyclonal Antibody

<b>Catalog No :</b>	YT4833
<b>Reactivity :</b>	Human;Mouse
<b>Applications :</b>	IHC;IF;ELISA
<b>Target :</b>	USP24
<b>Gene Name :</b>	USP24
<b>Protein Name :</b>	Ubiquitin carboxyl-terminal hydrolase 24
<b>Human Gene Id :</b>	23358
<b>Human Swiss Prot No :</b>	Q9UPU5
<b>Mouse Gene Id :</b>	329908
<b>Mouse Swiss Prot No :</b>	B1AY13
<b>Immunogen :</b>	The antiserum was produced against synthesized peptide derived from human USP24. AA range:21-70
<b>Specificity :</b>	USP24 Polyclonal Antibody detects endogenous levels of USP24 protein.
<b>Formulation :</b>	Liquid in PBS containing 50% glycerol, 0.5% BSA and 0.02% sodium azide.
<b>Source :</b>	Polyclonal, Rabbit,IgG
<b>Dilution :</b>	IHC 1:100 - 1:300. ELISA: 1:10000.. IF 1:50-200
<b>Purification :</b>	The antibody was affinity-purified from rabbit antiserum by affinity-chromatography using epitope-specific immunogen.
<b>Concentration :</b>	1 mg/ml
<b>Storage Stability :</b>	-15°C to -25°C/1 year(Do not lower than -25°C)

---

**Molecularweight :** 211kD

---

**Background :** Modification of cellular proteins by ubiquitin is an essential regulatory mechanism controlled by the coordinated action of multiple ubiquitin-conjugating and deubiquitinating enzymes. USP24 belongs to a large family of cysteine proteases that function as deubiquitinating enzymes (Quesada et al., 2004 [PubMed 14715245]).[supplied by OMIM, Mar 2008],

---

**Function :** catalytic activity:Ubiquitin C-terminal thioester + H(2)O = ubiquitin + a thiol.,function:Involved in the ubiquitin-dependent proteolytic pathway in conjunction with the 26S proteasome.,PTM:Phosphorylated upon DNA damage, probably by ATM or ATR.,similarity:Belongs to the peptidase C19 family.,similarity:Contains 1 UBA domain.,

---

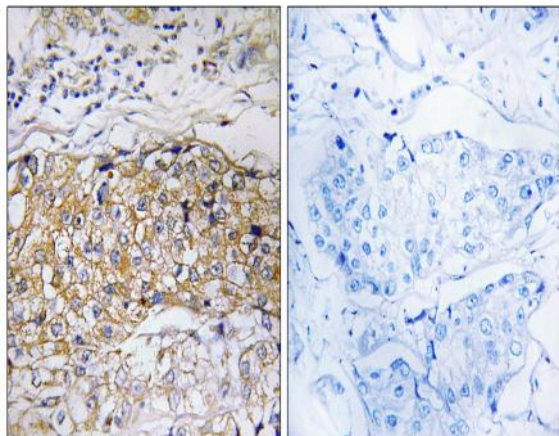
**Subcellular Location :** cytoplasm,

---

**Expression :** Brain,Epithelium,Placenta,Platelet,T-cell,

---

## Products Images



Immunohistochemistry analysis of paraffin-embedded human breast carcinoma tissue, using USP24 Antibody. The picture on the right is blocked with the synthesized peptide.