

USP30 Polyclonal Antibody

Catalog No :	YT4834
Reactivity :	Human;Mouse;Rat
Applications :	WB;ELISA
Target :	USP30
Fields :	>>Mitophagy - animal
Gene Name :	USP30
Protein Name :	Ubiquitin carboxyl-terminal hydrolase 30
Human Gene Id :	84749
Human Swiss Prot No :	Q70CQ3
Mouse Gene Id :	100756
Mouse Swiss Prot No :	Q3UN04
Immunogen :	The antiserum was produced against synthesized peptide derived from human USP30. AA range:31-80
Specificity :	USP30 Polyclonal Antibody detects endogenous levels of USP30 protein.
Formulation :	Liquid in PBS containing 50% glycerol, 0.5% BSA and 0.02% sodium azide.
Source :	Polyclonal, Rabbit,IgG
Dilution :	WB 1:500 - 1:2000. ELISA: 1:10000. Not yet tested in other applications.
Purification :	The antibody was affinity-purified from rabbit antiserum by affinity-chromatography using epitope-specific immunogen.
Concentration :	1 mg/ml

Storage Stability : -15°C to -25°C/1 year(Do not lower than -25°C)

Observed Band : 60kd,unspecial bands(65kd,105kd,130kd)in HeLa and HCT116 cell.

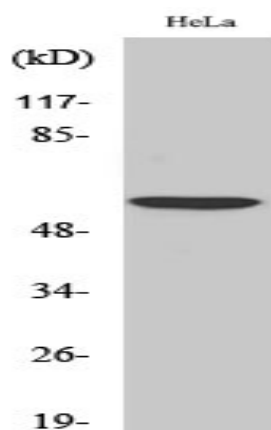
Background : USP30, a member of the ubiquitin-specific protease family (see USP1, MIM 603478), is a novel mitochondrial deubiquitinating (DUB) enzyme (Nakamura and Hirose, 2008 [PubMed 18287522]).[supplied by OMIM, Dec 2008],

Function : catalytic activity:Ubiquitin C-terminal thioester + H(2)O = ubiquitin + a thiol.,function:May participate in the maintenance of mitochondrial morphology.,similarity:Belongs to the peptidase C19 family.,tissue specificity:Expressed in skeletal muscle, pancreas, liver and kidney.,

Subcellular Location : Mitochondrion outer membrane .

Expression : Expressed in skeletal muscle, pancreas, liver and kidney.

Products Images



Western blot analysis of lysates from HeLa cells, using USP30 Antibody. The lane on the right is blocked with the synthesized peptide.

