

## USP38 Polyclonal Antibody

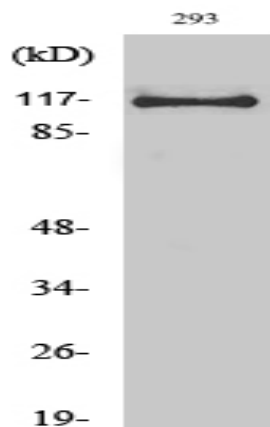
<b>Catalog No :</b>	YT4837
<b>Reactivity :</b>	Human;Rat;Mouse;
<b>Applications :</b>	WB;ELISA
<b>Target :</b>	USP38
<b>Gene Name :</b>	USP38
<b>Protein Name :</b>	Ubiquitin carboxyl-terminal hydrolase 38
<b>Human Gene Id :</b>	84640
<b>Human Swiss Prot No :</b>	Q8NB14
<b>Mouse Swiss Prot No :</b>	Q8BW70
<b>Immunogen :</b>	The antiserum was produced against synthesized peptide derived from human USP38. AA range:551-600
<b>Specificity :</b>	USP38 Polyclonal Antibody detects endogenous levels of USP38 protein.
<b>Formulation :</b>	Liquid in PBS containing 50% glycerol, 0.5% BSA and 0.02% sodium azide.
<b>Source :</b>	Polyclonal, Rabbit,IgG
<b>Dilution :</b>	WB 1:500 - 1:2000. ELISA: 1:10000. Not yet tested in other applications.
<b>Purification :</b>	The antibody was affinity-purified from rabbit antiserum by affinity-chromatography using epitope-specific immunogen.
<b>Concentration :</b>	1 mg/ml
<b>Storage Stability :</b>	-15°C to -25°C/1 year(Do not lower than -25°C)
<b>Observed Band :</b>	120kD

**Background :** catalytic activity:Ubiquitin C-terminal thioester + H(2)O = ubiquitin + a thiol.,sequence caution:The absence of the residues from Tyr-840 to Ser-871 is not the result of an alternative splicing.,similarity:Belongs to the peptidase C19 family.,tissue specificity:Highly expressed in skeletal muscle. Expressed in adrenal gland.,

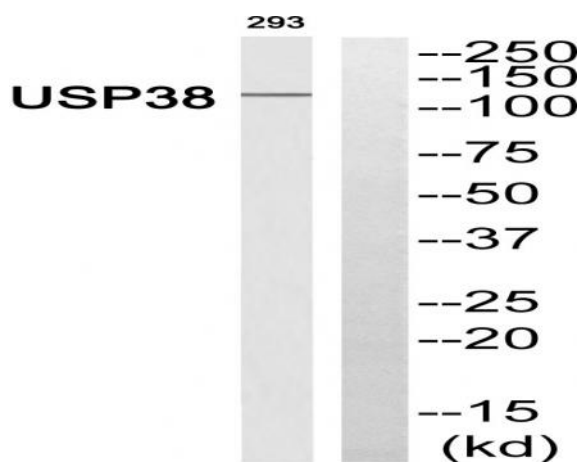
**Function :** catalytic activity:Ubiquitin C-terminal thioester + H(2)O = ubiquitin + a thiol.,sequence caution:The absence of the residues from Tyr-840 to Ser-871 is not the result of an alternative splicing.,similarity:Belongs to the peptidase C19 family.,tissue specificity:Highly expressed in skeletal muscle. Expressed in adrenal gland.,

**Expression :** Highly expressed in skeletal muscle. Expressed in adrenal gland.

## Products Images



Western Blot analysis of various cells using USP38 Polyclonal Antibody diluted at 1:1000. Secondary antibody(catalog#:RS0002) was diluted at 1:20000



Western blot analysis of USP38 Antibody. The lane on the right is blocked with the USP38 peptide.

Western blot analysis of the lysates from HepG2 cells using USP38 antibody.

