

USP48 Polyclonal Antibody

Catalog No :	YT4843
Reactivity :	Human;Mouse;Rat
Applications :	IHC;IF;WB;ELISA
Target :	USP48
Gene Name :	USP48
Protein Name :	Ubiquitin carboxyl-terminal hydrolase 48
Human Gene Id :	84196
Human Swiss Prot No :	Q86UV5
Mouse Gene Id :	170707
Mouse Swiss Prot No :	Q3V0C5
Rat Gene Id :	362636
Rat Swiss Prot No :	Q76LT8
Immunogen :	The antiserum was produced against synthesized peptide derived from human USP48. AA range:631-680
Specificity :	USP48 Polyclonal Antibody detects endogenous levels of USP48 protein.
Formulation :	Liquid in PBS containing 50% glycerol, 0.5% BSA and 0.02% sodium azide.
Source :	Polyclonal, Rabbit,IgG
Dilution :	WB 1:500-2000 IHC 1:100 - 1:300. ELISA: 1:5000.. IF 1:50-200
Purification :	The antibody was affinity-purified from rabbit antiserum by affinity-chromatography using epitope-specific immunogen.

Concentration : 1 mg/ml

Storage Stability : -15°C to -25°C/1 year(Do not lower than -25°C)

Observed Band : 120kD

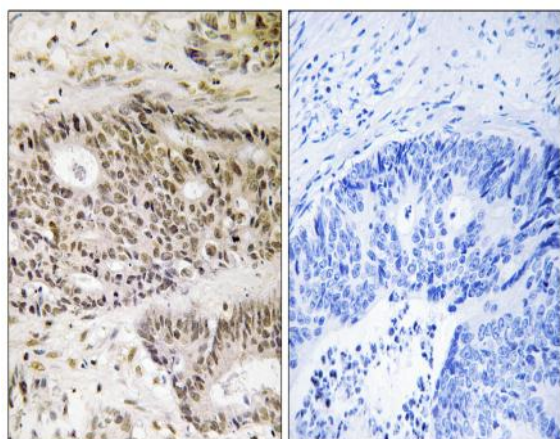
Background : This gene encodes a protein containing domains that associate it with the peptidase family C19, also known as family 2 of ubiquitin carboxyl-terminal hydrolases. Family members function as deubiquitinating enzymes, recognizing and hydrolyzing the peptide bond at the C-terminal glycine of ubiquitin. Enzymes in peptidase family C19 are involved in the processing of poly-ubiquitin precursors as well as that of ubiquitinated proteins. Alternate transcriptional splice variants, encoding different isoforms, have been characterized. [provided by RefSeq, Jul 2008],

Function : catalytic activity:Ubiquitin C-terminal thioester + H(2)O = ubiquitin + a thiol.,caution:Was named USP31 by some authors (PubMed:15354349 and PubMed:17081983).,function:Recognizes and hydrolyzes the peptide bond at the C-terminal Gly of ubiquitin. Involved in the processing of poly-ubiquitin precursors as well as that of ubiquitinated proteins. May be involved in the regulation of NF-kappa-B activation by TNF receptor superfamily via its interactions with RELA and TRAF2. May also play a regulatory role at post-synaptic sites.,sequence caution:Contaminating sequence. Potential poly-A sequence.,similarity:Belongs to the peptidase C19 family.,similarity:Contains 1 ubiquitin-like domain.,similarity:Contains 3 DUSP domains.,subunit:Interacts with TRAF2 and RELA.,tissue specificity:Widely expressed.,

Subcellular Location : Cytoplasm . Nucleus .

Expression : Widely expressed.

Products Images



Immunohistochemistry analysis of paraffin-embedded human colon carcinoma tissue, using USP48 Antibody. The picture on the right is blocked with the synthesized peptide.