

## USP50 Polyclonal Antibody

|                              |   |
|------------------------------|---|
| <b>Catalog No :</b>          | YT4844  |
| <b>Reactivity :</b>          | Human;Mouse   |
| <b>Applications :</b>        | WB;IHC;IF;ELISA   |
| <b>Target :</b>              | USP50   |
| <b>Gene Name :</b>           | USP50   |
| <b>Protein Name :</b>        | Inactive ubiquitin carboxyl-terminal hydrolase 50   |
| <b>Human Gene Id :</b>       | 373509  |
| <b>Human Swiss Prot No :</b> | Q70EL3  |
| <b>Mouse Gene Id :</b>       | 75083   |
| <b>Mouse Swiss Prot No :</b> | Q6P8X6  |
| <b>Immunogen :</b>           | The antiserum was produced against synthesized peptide derived from human USP50. AA range:251-300                     |
| <b>Specificity :</b>         | USP50 Polyclonal Antibody detects endogenous levels of USP50 protein.   |
| <b>Formulation :</b>         | Liquid in PBS containing 50% glycerol, 0.5% BSA and 0.02% sodium azide.   |
| <b>Source :</b>              | Polyclonal, Rabbit,IgG  |
| <b>Dilution :</b>            | WB 1:500 - 1:2000. IHC 1:100 - 1:300. ELISA: 1:20000.. IF 1:50-200  |
| <b>Purification :</b>        | The antibody was affinity-purified from rabbit antiserum by affinity-chromatography using epitope-specific immunogen. |
| <b>Concentration :</b>       | 1 mg/ml   |
| <b>Storage Stability :</b>   | -15°C to -25°C/1 year(Do not lower than -25°C)  |

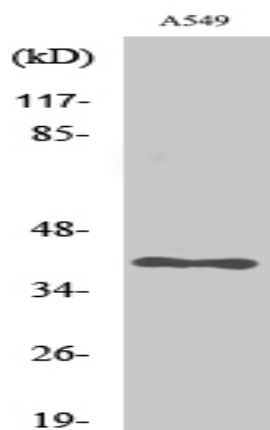
**Observed Band :** 38kD

**Background :** caution:Although the active site residues are conserved, lacks the conserved Asp/Asn residue which is normally found 7-9 residues after the catalytic His.,function:Has no peptidase activity.,similarity:Belongs to the peptidase C19 family.,tissue specificity:Weakly expressed in a few tissues.,

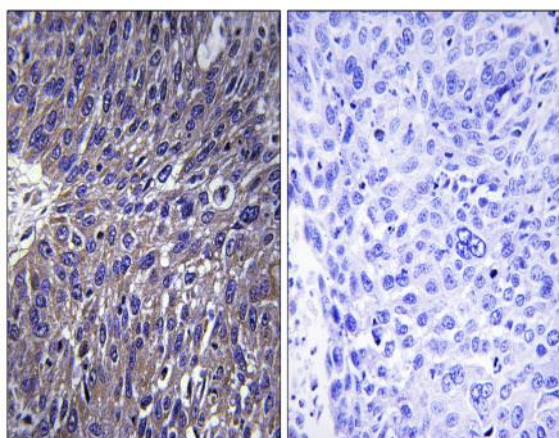
**Function :** caution:Although the active site residues are conserved, lacks the conserved Asp/Asn residue which is normally found 7-9 residues after the catalytic His.,function:Has no peptidase activity.,similarity:Belongs to the peptidase C19 family.,tissue specificity:Weakly expressed in a few tissues.,

**Expression :** Weakly expressed in a few tissues.

## Products Images



Western Blot analysis of various cells using USP50 Polyclonal Antibody. Secondary antibody(catalog#:RS0002) was diluted at 1:20000



Immunohistochemistry analysis of paraffin-embedded human lung carcinoma tissue, using USP50 Antibody. The picture on the right is blocked with the synthesized peptide.