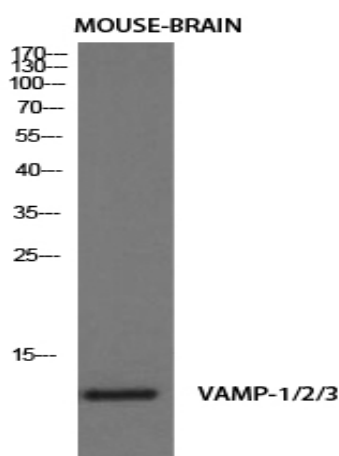


VAMP-1/2/3 Polyclonal Antibody

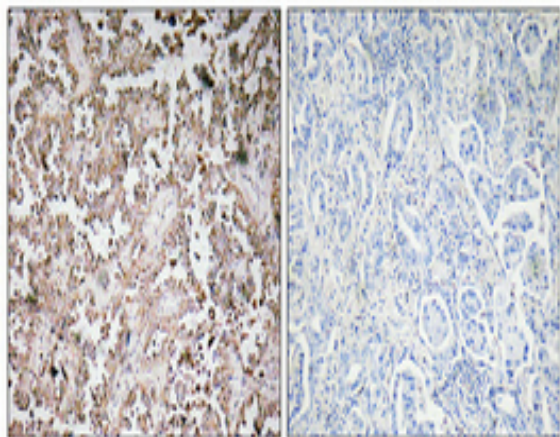
Catalog No :	YT4850
Reactivity :	Human;Mouse;Rat
Applications :	WB;IHC;IF;ELISA
Target :	VAMP-1/2/3
Fields :	>>SNARE interactions in vesicular transport
Gene Name :	VAMP1/VAMP2/VAMP3
Protein Name :	Vesicle-associated membrane protein 1/2/3
Human Gene Id :	6843/6844/9341
Human Swiss Prot No :	P23763/P63027/Q15836
Mouse Gene Id :	22317/22318/22319
Rat Gene Id :	25624/24803/29528
Rat Swiss Prot No :	Q63666/P63045/P63025
Immunogen :	The antiserum was produced against synthesized peptide derived from human VAMP-1/2/3. AA range:21-70
Specificity :	VAMP-1/2/3 Polyclonal Antibody detects endogenous levels of VAMP-1/2/3 protein.
Formulation :	Liquid in PBS containing 50% glycerol, 0.5% BSA and 0.02% sodium azide.
Source :	Polyclonal, Rabbit,IgG
Dilution :	WB 1:500-2000 IHC 1:100 - 1:300. ELISA: 1:10000. IF 1:50-200
Purification :	The antibody was affinity-purified from rabbit antiserum by affinity-chromatography using epitope-specific immunogen.

Concentration :	1 mg/ml
Storage Stability :	-15°C to -25°C/1 year(Do not lower than -25°C)
Observed Band :	13kD
Cell Pathway :	SNARE interactions in vesicular transport;
Background :	Synaptobrevins, syntaxins, and the synaptosomal-associated protein SNAP25 are the main components of a protein complex involved in the docking and/or fusion of synaptic vesicles with the presynaptic membrane. The protein encoded by this gene is a member of the vesicle-associated membrane protein (VAMP)/synaptobrevin family. Mutations in this gene are associated with autosomal dominant spastic ataxia 1. Multiple alternative splice variants have been described, but the full-length nature of some variants has not been defined. [provided by RefSeq, Jul 2014],
Function :	function:Involved in the targeting and/or fusion of transport vesicles to their target membrane.,similarity:Belongs to the synaptobrevin family.,similarity:Contains 1 v-SNARE coiled-coil homology domain.,subunit:Interacts with VAPA and VAPB.,tissue specificity:Nervous system, skeletal muscle and adipose tissue.,
Subcellular Location :	[Isoform 1]: Cytoplasmic vesicle, secretory vesicle, synaptic vesicle membrane ; Single-pass type IV membrane protein . Cell junction, synapse, synaptosome . ; [Isoform 2]: Cytoplasmic vesicle membrane ; Single-pass type IV membrane protein . Cell junction, synapse, synaptosome . ; [Isoform 3]: Mitochondrion outer membrane; Single-pass type IV membrane protein .
Expression :	Nervous system, skeletal muscle and adipose tissue.

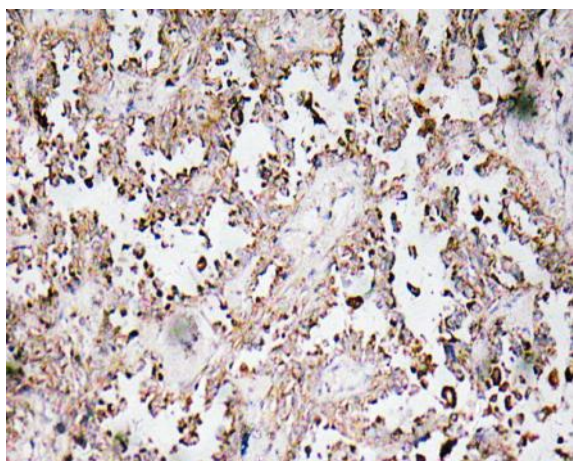
Products Images



Western Blot analysis of mouse-brain cells using VAMP-1/2/3 Polyclonal Antibody diluted at 1:1000. Secondary antibody(catalog#:RS0002) was diluted at 1:20000



Immunohistochemical analysis of paraffin-embedded Human lung cancer. Antibody was diluted at 1:100(4° overnight). High-pressure and temperature Tris-EDTA,pH8.0 was used for antigen retrieval. Negative contrl (right) obtaned from antibody was pre-absorbed by immunogen peptide.



Immunohistochemistry analysis of VAMP-1/2/3 antibody in paraffin-embedded human lung carcinoma tissue.