

V-ATPase D Polyclonal Antibody

Catalog No :	YT4860
Reactivity :	Human;Mouse;Rat;Swine
Applications :	WB;ELISA
Target :	V-ATPase D
Fields :	>>Oxidative phosphorylation;>>Metabolic pathways;>>Phagosome;>>mTOR signaling pathway;>>Synaptic vesicle cycle;>>Collecting duct acid secretion;>>Vibrio cholerae infection;>>Epithelial cell signaling in Helicobacter pylori infection;>>Human papillomavirus infection;>>Rheumatoid arthritis
Gene Name :	ATP6V1D
Protein Name :	V-type proton ATPase subunit D
Human Gene Id :	51382
Human Swiss Prot No :	Q9Y5K8
Mouse Gene Id :	73834
Mouse Swiss Prot No :	P57746
Immunogen :	Synthesized peptide derived from V-ATPase D . at AA range: 70-150
Specificity :	V-ATPase D Polyclonal Antibody detects endogenous levels of V-ATPase D protein.
Formulation :	Liquid in PBS containing 50% glycerol, 0.5% BSA and 0.02% sodium azide.
Source :	Polyclonal, Rabbit,IgG
Dilution :	WB 1:500 - 1:2000. ELISA: 1:40000. Not yet tested in other applications.
Purification :	The antibody was affinity-purified from rabbit antiserum by affinity-chromatography using epitope-specific immunogen.

Concentration : 1 mg/ml

Storage Stability : -15°C to -25°C/1 year(Do not lower than -25°C)

Observed Band : 28kD

Cell Pathway : Oxidative phosphorylation;Vibrio cholerae infection;Epithelial cell signaling in Helicobacter pylori infection;

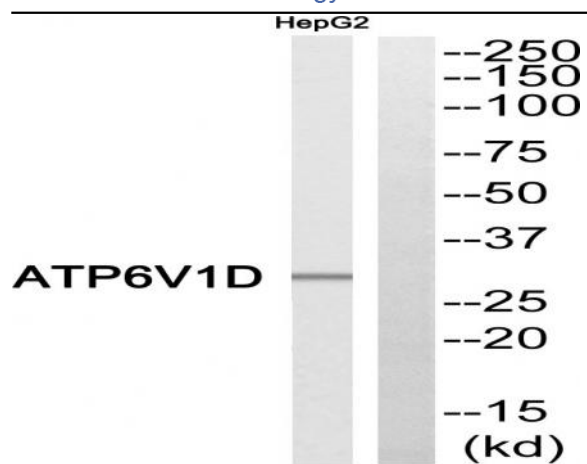
Background : This gene encodes a component of vacuolar ATPase (V-ATPase), a multisubunit enzyme that mediates acidification of eukaryotic intracellular organelles. V-ATPase dependent organelle acidification is necessary for such intracellular processes as protein sorting, zymogen activation, receptor-mediated endocytosis, and synaptic vesicle proton gradient generation. V-ATPase is composed of a cytosolic V1 domain and a transmembrane V0 domain. The V1 domain consists of three A and three B subunits, two G subunits plus the C, D, E, F, and H subunits. The V1 domain contains the ATP catalytic site. The V0 domain consists of five different subunits: a, c, c', c'', and d. Additional isoforms of many of the V1 and V0 subunit proteins are encoded by multiple genes or alternatively spliced transcript variants. This gene encodes the V1 domain D subunit protein. [provided by RefSeq, Jul 2008],

Function : function:Subunit of the peripheral V1 complex of vacuolar ATPase. Vacuolar ATPase is responsible for acidifying a variety of intracellular compartments in eukaryotic cells, thus providing most of the energy required for transport processes in the vacuolar system.,similarity:Belongs to the V-ATPase D subunit family.,subunit:V-ATPase is an heteromultimeric enzyme composed of a peripheral catalytic V1 complex (components A to H) attached to an integral membrane V0 proton pore complex (components: a, c, c', c'' and d).,

Subcellular Location : Membrane ; Peripheral membrane protein ; Cytoplasmic side . Cytoplasmic vesicle, clathrin-coated vesicle membrane ; Peripheral membrane protein . Cytoplasm, cytoskeleton, microtubule organizing center, centrosome . Cell projection, cilium . Localizes to centrosome and the base of the cilium. .

Expression : Bone marrow,Brain,Heart,Pancreatic adenocarcinoma,Pituitary,Placent

Products Images



Western blot analysis of ATP6V1D Antibody. The lane on the right is blocked with the ATP6V1D peptide.