

## TNF-IP 8 Polyclonal Antibody

|                              |   |
|------------------------------|---|
| <b>Catalog No :</b>          | YT4685  |
| <b>Reactivity :</b>          | Human;Mouse   |
| <b>Applications :</b>        | WB;IHC;IF;ELISA   |
| <b>Target :</b>              | TNF-IP 8  |
| <b>Gene Name :</b>           | TNFAIP8   |
| <b>Protein Name :</b>        | Tumor necrosis factor alpha-induced protein 8   |
| <b>Human Gene Id :</b>       | 25816   |
| <b>Human Swiss Prot No :</b> | O95379  |
| <b>Mouse Gene Id :</b>       | 106869  |
| <b>Mouse Swiss Prot No :</b> | Q921Z5  |
| <b>Immunogen :</b>           | The antiserum was produced against synthesized peptide derived from human TFIP8. AA range:31-80                       |
| <b>Specificity :</b>         | TNF-IP 8 Polyclonal Antibody detects endogenous levels of TNF-IP 8 protein.   |
| <b>Formulation :</b>         | Liquid in PBS containing 50% glycerol, 0.5% BSA and 0.02% sodium azide.   |
| <b>Source :</b>              | Polyclonal, Rabbit,IgG  |
| <b>Dilution :</b>            | WB 1:500 - 1:2000. IHC 1:100 - 1:300. IF 1:200 - 1:1000. ELISA: 1:10000. Not yet tested in other applications.        |
| <b>Purification :</b>        | The antibody was affinity-purified from rabbit antiserum by affinity-chromatography using epitope-specific immunogen. |
| <b>Concentration :</b>       | 1 mg/ml   |
| <b>Storage Stability :</b>   | -15°C to -25°C/1 year(Do not lower than -25°C)  |

**Observed Band :** 23kD**Background :**

developmental stage:Expressed at high levels in the fetal liver, lung and kidney.,function:Acts as a negative mediator of apoptosis and may play a role in tumor progression. Suppresses the TNF-mediated apoptosis by inhibiting caspase-8 activity but not the processing of procaspase-8, subsequently resulting in inhibition of BID cleavage and caspase-3 activation.,induction:By nuclear factor-KB (NF-KB) and TNF. Induction by TNF depends upon activation of NF-KB.,similarity:Belongs to the TNFAIP8 family.,tissue specificity:Expressed at high levels in the spleen, lymph node, thymus, thyroid, bone marrow and placenta. Expressed at high levels both in various tumor tissues, unstimulated and cytokine-activated cultured cells. Expressed at low levels in the spinal cord, ovary, lung, adrenal glands, heart, brain, testis and skeletal muscle.,

**Function :**

developmental stage:Expressed at high levels in the fetal liver, lung and kidney.,function:Acts as a negative mediator of apoptosis and may play a role in tumor progression. Suppresses the TNF-mediated apoptosis by inhibiting caspase-8 activity but not the processing of procaspase-8, subsequently resulting in inhibition of BID cleavage and caspase-3 activation.,induction:By nuclear factor-KB (NF-KB) and TNF. Induction by TNF depends upon activation of NF-KB.,similarity:Belongs to the TNFAIP8 family.,tissue specificity:Expressed at high levels in the spleen, lymph node, thymus, thyroid, bone marrow and placenta. Expressed at high levels both in various tumor tissues, unstimulated and cytokine-activated cultured cells. Expressed at low levels in the spinal cord, ovary, lung, adrenal glands, heart, brain, testis and skeletal muscle.,

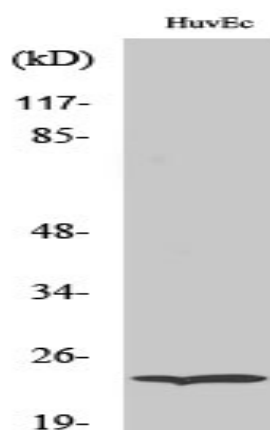
**Subcellular Location :**

Cytoplasm .

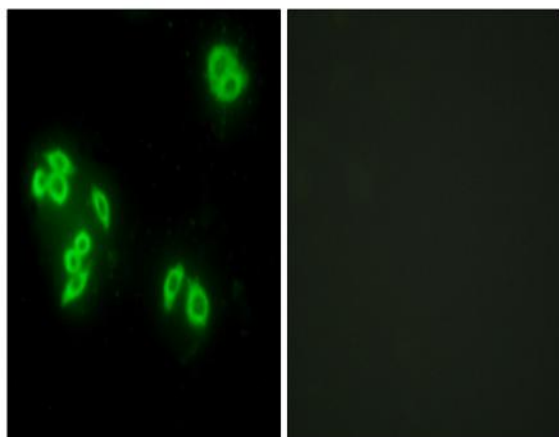
**Expression :**

Expressed at high levels in the spleen, lymph node, thymus, thyroid, bone marrow and placenta. Expressed at high levels both in various tumor tissues, unstimulated and cytokine-activated cultured cells. Expressed at low levels in the spinal cord, ovary, lung, adrenal glands, heart, brain, testis and skeletal muscle.

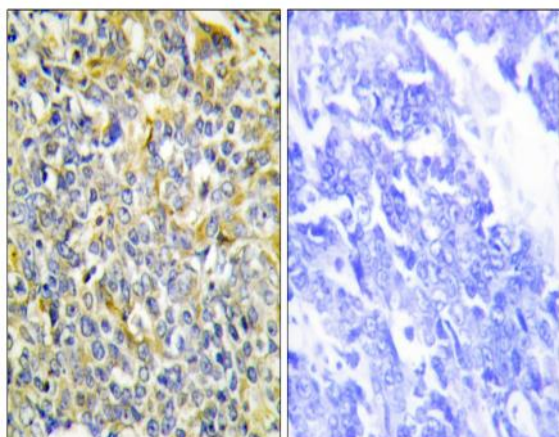
## Products Images



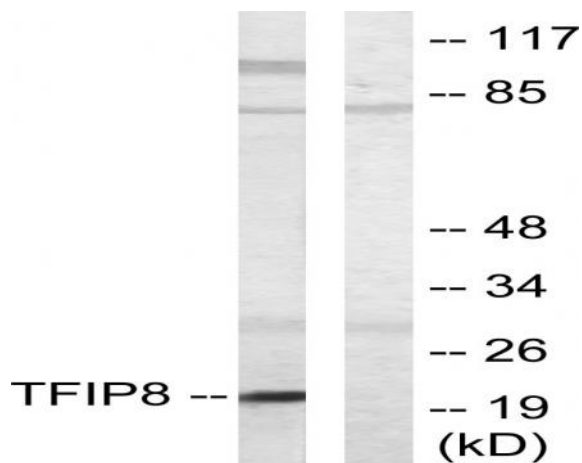
Western Blot analysis of various cells using TNF-IP 8 Polyclonal Antibody. Secondary antibody(catalog#:RS0002) was diluted at 1:20000



Immunofluorescence analysis of A549 cells, using TFIP8 Antibody. The picture on the right is blocked with the synthesized peptide.



Immunohistochemistry analysis of paraffin-embedded human lung carcinoma tissue, using TFIP8 Antibody. The picture on the right is blocked with the synthesized peptide.



Western blot analysis of lysates from HUVEC cells, using TFIP8 Antibody. The lane on the right is blocked with the synthesized peptide.