

WAVE1 Polyclonal Antibody

Catalog No :	YT4897
Reactivity :	Human;Mouse;Rat
Applications :	WB;IHC;IF;ELISA
Target :	WAVE1
Fields :	>>Adherens junction;>>Fc gamma R-mediated phagocytosis;>>Regulation of actin cytoskeleton;>>Bacterial invasion of epithelial cells;>>Pathogenic Escherichia coli infection;>>Shigellosis;>>Choline metabolism in cancer
Gene Name :	WASF1
Protein Name :	Wiskott-Aldrich syndrome protein family member 1
Human Gene Id :	8936
Human Swiss Prot No :	Q92558
Mouse Gene Id :	83767
Mouse Swiss Prot No :	Q8R5H6
Rat Gene Id :	294568
Rat Swiss Prot No :	Q5BJU7
Immunogen :	The antiserum was produced against synthesized peptide derived from human WAVE1. AA range:91-140
Specificity :	WAVE1 Polyclonal Antibody detects endogenous levels of WAVE1 protein.
Formulation :	Liquid in PBS containing 50% glycerol, 0.5% BSA and 0.02% sodium azide.
Source :	Polyclonal, Rabbit,IgG
Dilution :	WB 1:500 - 1:2000. IHC 1:100 - 1:300. IF 1:200 - 1:1000. ELISA: 1:40000. Not

yet tested in other applications.

Purification : The antibody was affinity-purified from rabbit antiserum by affinity-chromatography using epitope-specific immunogen.

Concentration : 1 mg/ml

Storage Stability : -15°C to -25°C/1 year(Do not lower than -25°C)

Observed Band : 70kD

Cell Pathway : Adherens_Junction;Fc gamma R-mediated phagocytosis;Regulates Actin and Cytoskeleton;

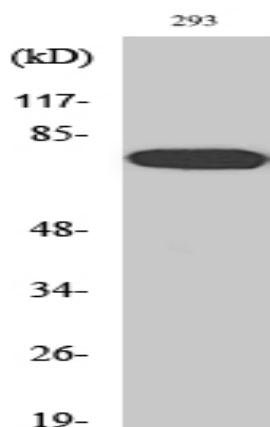
Background : The protein encoded by this gene, a member of the Wiskott-Aldrich syndrome protein (WASP)-family, plays a critical role downstream of Rac, a Rho-family small GTPase, in regulating the actin cytoskeleton required for membrane ruffling. It has been shown to associate with an actin nucleation core Arp2/3 complex while enhancing actin polymerization in vitro. Wiskott-Aldrich syndrome is a disease of the immune system, likely due to defects in regulation of actin cytoskeleton. Multiple alternatively spliced transcript variants encoding the same protein have been found for this gene. [provided by RefSeq, Jul 2008],

Function : domain: Binds the Arp2/3 complex through the C-terminal region and actin through verprolin homology (VPH) domain.,function: Downstream effector molecules involved in the transmission of signals from tyrosine kinase receptors and small GTPases to the actin cytoskeleton.,similarity: Belongs to the SCAR/WAVE family.,similarity: Contains 1 WH2 domain.,subcellular location: Dot-like pattern in the cytoplasm. Concentrated in Rac-regulated membrane-ruffling areas.,subunit: Component of the WAVE1 complex composed of ABI2, CYFIP2, C3orf10/HSPC300, NCKAP1 and WASF1/WAVE1. CYFIP2 binds to activated RAC1 which causes the complex to dissociate, releasing activated WASF1. The complex can also be activated by NCK1 (By similarity). Binds actin and the Arp2/3 complex. Interacts with BAIAP2.,tissue specificity: Highly expressed in brain. Lowly expressed in testis, ovary, colon, kidney, pancreas, thymus, small in

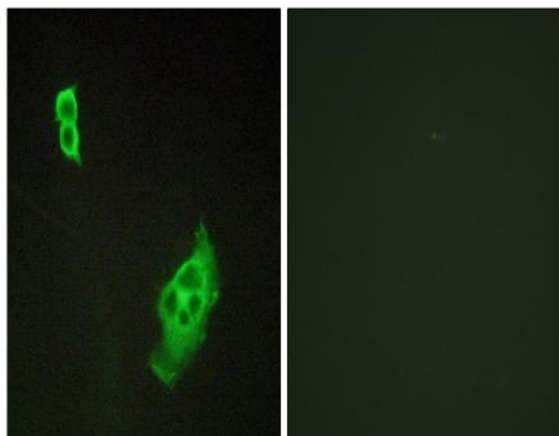
Subcellular Location : Cytoplasm, cytoskeleton . Cell junction, synapse . Cell junction, focal adhesion . Dot-like pattern in the cytoplasm. Concentrated in Rac-regulated membrane-ruffling areas (PubMed:9889097). Partial translocation to focal adhesion sites might be mediated by interaction with SORBS2 (PubMed:18559503). In neurons, colocalizes with activated NTRK2 after BDNF addition in endocytic sites through the association with TMEM108 (By similarity). .

Expression : Highly expressed in brain. Lowly expressed in testis, ovary, colon, kidney, pancreas, thymus, small intestine and peripheral blood.

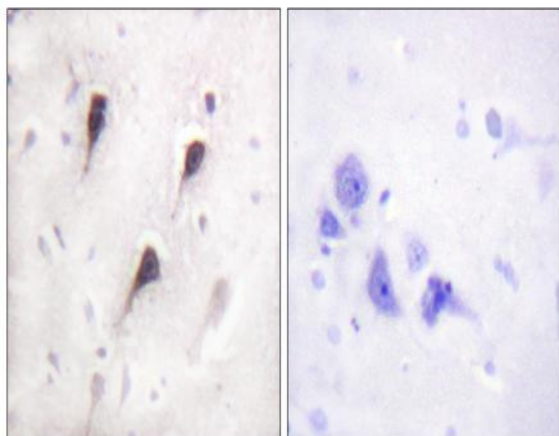
Products Images



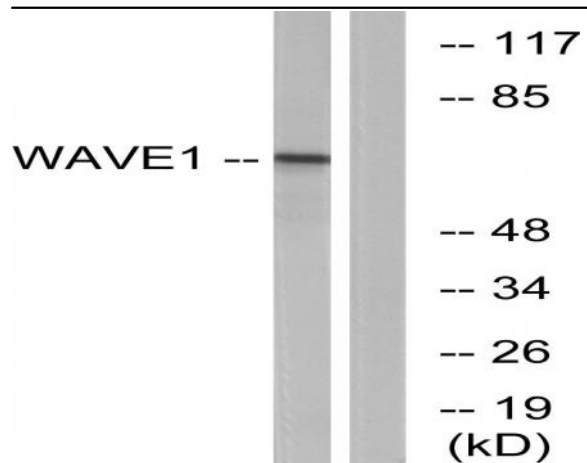
Western Blot analysis of various cells using WAVE1 Polyclonal Antibody. Secondary antibody(catalog#:RS0002) was diluted at 1:20000



Immunofluorescence analysis of COS7 cells, using WAVE1 Antibody. The picture on the right is blocked with the synthesized peptide.



Immunohistochemistry analysis of paraffin-embedded human brain tissue, using WAVE1 Antibody. The picture on the right is blocked with the synthesized peptide.



Western blot analysis of lysates from 293 cells, treated with insulin 0.01 U/ml 15', using WAVE1 Antibody. The lane on the right is blocked with the synthesized peptide.