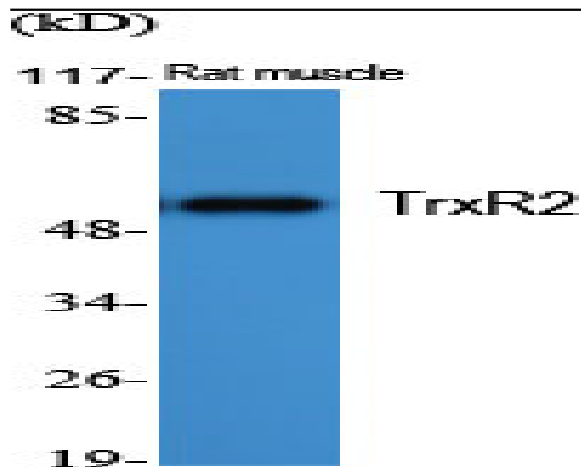


TrxR2 Polyclonal Antibody

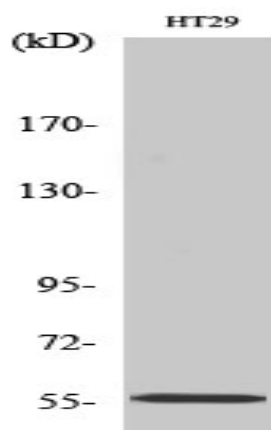
Catalog No :	YT4752
Reactivity :	Human;Mouse;Rat
Applications :	WB;IHC;IF;ELISA
Target :	TrxR2
Fields :	>>Selenocompound metabolism;>>Pathways in cancer;>>Hepatocellular carcinoma
Gene Name :	TXNRD2
Protein Name :	Thioredoxin reductase 2 mitochondrial
Human Gene Id :	10587
Human Swiss Prot No :	Q9NNW7
Mouse Gene Id :	26462
Mouse Swiss Prot No :	Q9JLT4
Rat Gene Id :	50551
Rat Swiss Prot No :	Q9Z0J5
Immunogen :	The antiserum was produced against synthesized peptide derived from human TRXR2. AA range:471-520
Specificity :	TrxR2 Polyclonal Antibody detects endogenous levels of TrxR2 protein.
Formulation :	Liquid in PBS containing 50% glycerol, 0.5% BSA and 0.02% sodium azide.
Source :	Polyclonal, Rabbit,IgG
Dilution :	WB 1:500 - 1:2000. IHC 1:100 - 1:300. ELISA: 1:10000.. IF 1:50-200

Purification :	The antibody was affinity-purified from rabbit antiserum by affinity-chromatography using epitope-specific immunogen.
Concentration :	1 mg/ml
Storage Stability :	-15°C to -25°C/1 year(Do not lower than -25°C)
Observed Band :	56kD
Cell Pathway :	Pyrimidine metabolism;
Background :	thioredoxin reductase 2(TXNRD2) Homo sapiens This gene encodes a member of the class I pyridine nucleotide-disulfide oxidoreductase family. The encoded protein is a selenocysteine-containing flavoenzyme that maintains thioredoxins in a reduced state, thereby playing a key role in regulating the cellular redox environment. Mammals have three related thioredoxin reductases. This gene encodes a mitochondrial form important for scavenging of reactive oxygen species in mitochondria. Alternatively spliced transcript variants encoding different isoforms have been described. [provided by RefSeq, Sep 2013],
Function :	catalytic activity:Thioredoxin + NADP(+) = thioredoxin disulfide + NADPH.,cofactor:FAD.,function:Maintains thioredoxin in a reduced state. Implicated in the defenses against oxidative stress. May play a role in redox-regulated cell signaling.,miscellaneous:The active site is a redox-active disulfide bond. The selenocysteine residue is essential for enzymatic activity.,sequence caution:Translated as Sec.,similarity:Belongs to the class-I pyridine nucleotide-disulfide oxidoreductase family.,subunit:Homodimer.,tissue specificity:Highly expressed in the prostate, ovary, liver, testis, uterus, colon and small intestine. Intermediate levels in brain, skeletal muscle, heart and spleen. Low levels in placenta, pancreas, thymus and peripheral blood leukocytes. According to PubMed:10608886, high levels in kidney, whereas according to PubMed:9923614 levels are low.,
Subcellular Location :	Mitochondrion .
Expression :	Highly expressed in the prostate, ovary, liver, testis, uterus, colon and small intestine. Intermediate levels in brain, skeletal muscle, heart and spleen. Low levels in placenta, pancreas, thymus and peripheral blood leukocytes. According to PubMed:10608886, high levels in kidney, whereas according to PubMed:9923614, levels are low. High expression is observed in the adrenal cortex (PubMed:24601690).

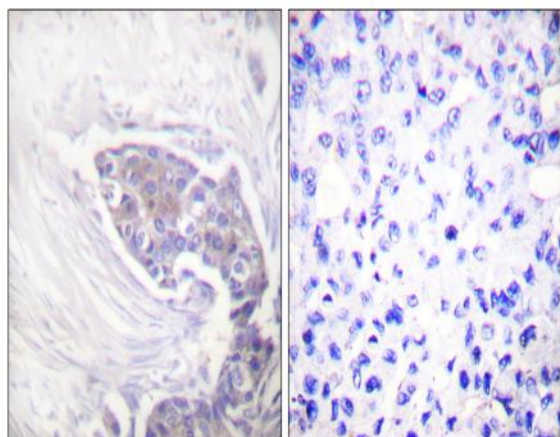
Products Images



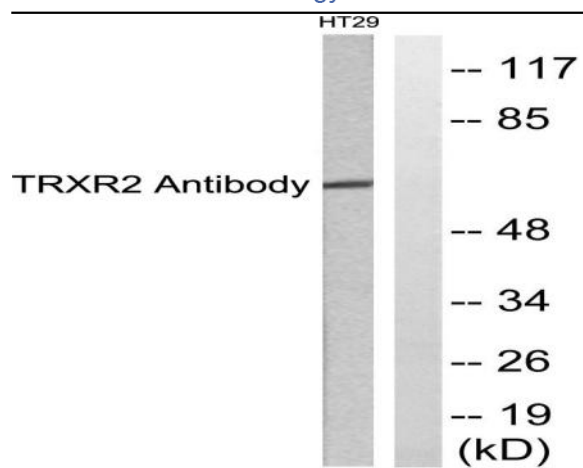
Western Blot analysis of various cells using TrxR2 Polyclonal Antibody. Secondary antibody(catalog#:RS0002) was diluted at 1:20000



Western Blot analysis of HT29 cells using TrxR2 Polyclonal Antibody. Secondary antibody(catalog#:RS0002) was diluted at 1:20000



Immunohistochemistry analysis of paraffin-embedded human breast carcinoma tissue, using TRXR2 Antibody. The picture on the right is blocked with the synthesized peptide.



Western blot analysis of lysates from HT29 cells, using TRXR2 Antibody. The lane on the right is blocked with the synthesized peptide.