

Trypsin-1 Polyclonal Antibody

Catalog No :	YT4753
Reactivity :	Human;Rat
Applications :	WB;ELISA
Target :	Trypsin-1
Fields :	>>Neuroactive ligand-receptor interaction;>>Pancreatic secretion;>>Protein digestion and absorption;>>Influenza A
Gene Name :	PRSS1
Protein Name :	Trypsin-1
Human Gene Id :	5644
Human Swiss Prot No :	P07477
Immunogen :	The antiserum was produced against synthesized peptide derived from human Trypsin-1. AA range:60-109
Specificity :	Trypsin-1 Polyclonal Antibody detects endogenous levels of Trypsin-1 protein.
Formulation :	Liquid in PBS containing 50% glycerol, 0.5% BSA and 0.02% sodium azide.
Source :	Polyclonal, Rabbit,IgG
Dilution :	WB 1:500 - 1:2000. ELISA: 1:10000. Not yet tested in other applications.
Purification :	The antibody was affinity-purified from rabbit antiserum by affinity-chromatography using epitope-specific immunogen.
Concentration :	1 mg/ml
Storage Stability :	-15°C to -25°C/1 year(Do not lower than -25°C)
Observed Band :	23kD

Cell Pathway : Neuroactive ligand-receptor interaction;

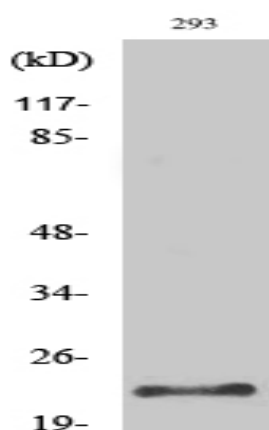
Background : This gene encodes a trypsinogen, which is a member of the trypsin family of serine proteases. This enzyme is secreted by the pancreas and cleaved to its active form in the small intestine. It is active on peptide linkages involving the carboxyl group of lysine or arginine. Mutations in this gene are associated with hereditary pancreatitis. This gene and several other trypsinogen genes are localized to the T cell receptor beta locus on chromosome 7. [provided by RefSeq, Jul 2008],

Function : catalytic activity:Preferential cleavage: Arg-|-Xaa, Lys-|-Xaa.,caution:Tyr-154 was proposed to be phosphorylated (PubMed:8683601) but it has been shown (PubMed:17087724) to be sulfated instead. Phosphate and sulfate groups are similar in mass and size, and this can lead to erroneous interpretation of the results.,cofactor:Binds 1 calcium ion per subunit.,disease:Defects in PRSS1 are a cause of hereditary pancreatitis (HPC) [MIM:167800]; also known as chronic pancreatitis (CP). HPC is an autosomal dominant disease characterized by the presence of calculi in pancreatic ducts. It causes severe abdominal pain attacks.,function:Has activity against the synthetic substrates Boc-Phe-Ser-Arg-Mec, Boc-Leu-Thr-Arg-Mec, Boc-Gln-Ala-Arg-Mec and Boc-Val-Pro-Arg-Mec. The single-chain form is more active than the two-chain form against all of these substrates.,mass spectrometry: PubMed:8683601,PTM:Occ

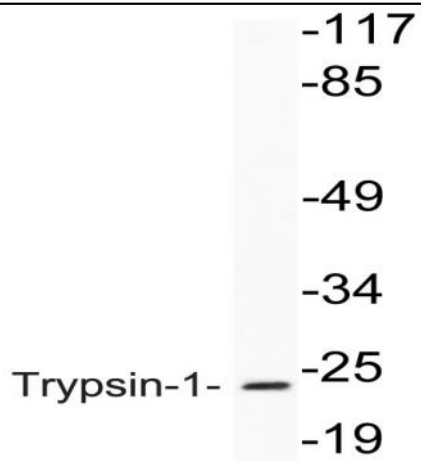
Subcellular Location : Secreted, extracellular space.

Expression : Brain,Cajal-Retzius cell,Gastric adenocarcinoma,PCR rescued clones,Prostate,

Products Images



Western Blot analysis of various cells using Trypsin-1 Polyclonal Antibody diluted at 1:500. Secondary antibody(catalog#:RS0002) was diluted at 1:20000



Western blot analysis of lysate from 293 cells, using Trypsin-1 antibody.