

## TSG-6 Polyclonal Antibody

<b>Catalog No :</b>	YT4761
<b>Reactivity :</b>	Human;Mouse
<b>Applications :</b>	WB;IHC;IF;ELISA
<b>Target :</b>	TSG-6
<b>Gene Name :</b>	TNFAIP6
<b>Protein Name :</b>	Tumor necrosis factor-inducible gene 6 protein
<b>Human Gene Id :</b>	7130
<b>Human Swiss Prot No :</b>	P98066
<b>Mouse Gene Id :</b>	21930
<b>Mouse Swiss Prot No :</b>	O08859
<b>Immunogen :</b>	The antiserum was produced against synthesized peptide derived from human TSG6. AA range:21-70
<b>Specificity :</b>	TSG-6 Polyclonal Antibody detects endogenous levels of TSG-6 protein.
<b>Formulation :</b>	Liquid in PBS containing 50% glycerol, 0.5% BSA and 0.02% sodium azide.
<b>Source :</b>	Polyclonal, Rabbit,IgG
<b>Dilution :</b>	WB 1:500 - 1:2000. IHC 1:100 - 1:300. IF 1:200 - 1:1000. ELISA: 1:5000. Not yet tested in other applications.
<b>Purification :</b>	The antibody was affinity-purified from rabbit antiserum by affinity-chromatography using epitope-specific immunogen.
<b>Concentration :</b>	1 mg/ml
<b>Storage Stability :</b>	-15°C to -25°C/1 year(Do not lower than -25°C)

**Observed Band :** 31kD

**Background :**

The protein encoded by this gene is a secretory protein that contains a hyaluronan-binding domain, and thus is a member of the hyaluronan-binding protein family. The hyaluronan-binding domain is known to be involved in extracellular matrix stability and cell migration. This protein has been shown to form a stable complex with inter-alpha-inhibitor (I alpha I), and thus enhance the serine protease inhibitory activity of I alpha I, which is important in the protease network associated with inflammation. This gene can be induced by proinflammatory cytokines such as tumor necrosis factor alpha and interleukin-1. Enhanced levels of this protein are found in the synovial fluid of patients with osteoarthritis and rheumatoid arthritis.[provided by RefSeq, Dec 2010],

**Function :**

function:Possibly involved in cell-cell and cell-matrix interactions during inflammation and tumorigenesis.,induction:By TNF.,similarity:Contains 1 CUB domain.,similarity:Contains 1 Link domain.,subunit:Interacts with inter-alpha-inhibitor (I-alpha-I). Chondroitin sulfate may be required for the stability of the complex.,tissue specificity:Found in the synovial fluid of patients with rheumatoid arthritis.,

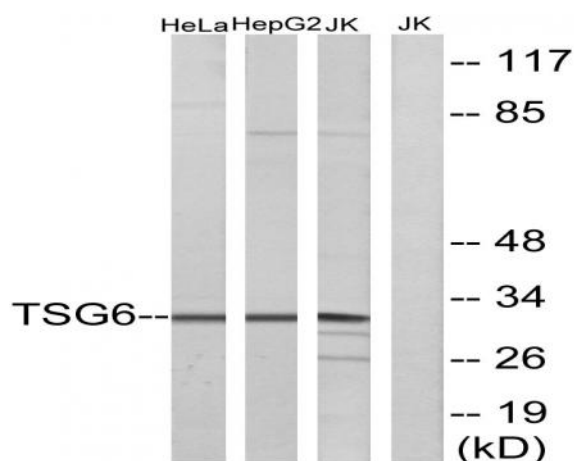
**Subcellular Location :**

Secreted .

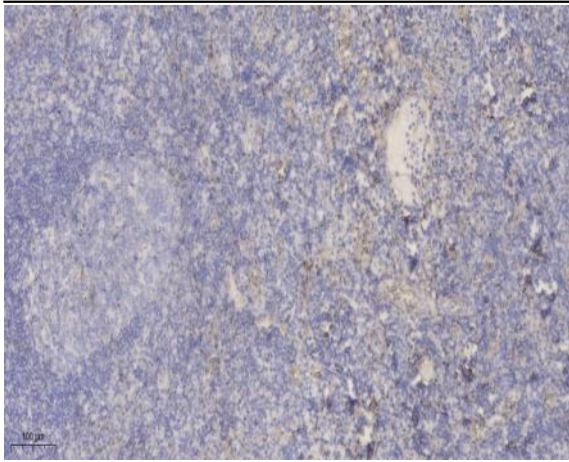
**Expression :**

Expressed in airway epithelium and submucosal gland (at protein level). Colocalizes with bikunin at the ciliary border. Present in bronchoalveolar lavage fluid (at protein level) (PubMed:16873769). Expressed in mesenchymal stem cells (PubMed:16771708). Found in the synovial fluid of patients with rheumatoid arthritis.

**Products Images**



Western blot analysis of lysates from Jurkat, HeLa, and HepG2 cells, using TSG6 Antibody. The lane on the right is blocked with the synthesized peptide.



Immunohistochemical analysis of paraffin-embedded human tonsil. 1, Antibody was diluted at 1:200(4 ° overnight). 2, Tris-EDTA,pH9.0 was used for antigen retrieval. 3,Secondary antibody was diluted at 1:200(room temperature, 30min).