

## TTC23 Polyclonal Antibody

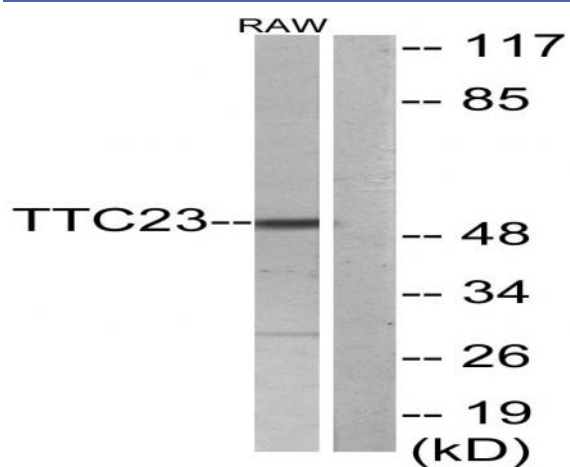
<b>Catalog No :</b>	YT4769
<b>Reactivity :</b>	Human;Rat;Mouse;
<b>Applications :</b>	WB;ELISA
<b>Target :</b>	TTC23
<b>Gene Name :</b>	TTC23
<b>Protein Name :</b>	Tetratricopeptide repeat protein 23
<b>Human Gene Id :</b>	64927
<b>Human Swiss Prot No :</b>	Q5W5X9
<b>Mouse Swiss Prot No :</b>	Q8CHY7
<b>Immunogen :</b>	The antiserum was produced against synthesized peptide derived from human TTC23. AA range:341-390
<b>Specificity :</b>	TTC23 Polyclonal Antibody detects endogenous levels of TTC23 protein.
<b>Formulation :</b>	Liquid in PBS containing 50% glycerol, 0.5% BSA and 0.02% sodium azide.
<b>Source :</b>	Polyclonal, Rabbit,IgG
<b>Dilution :</b>	WB 1:500 - 1:2000. ELISA: 1:40000. Not yet tested in other applications.
<b>Purification :</b>	The antibody was affinity-purified from rabbit antiserum by affinity-chromatography using epitope-specific immunogen.
<b>Concentration :</b>	1 mg/ml
<b>Storage Stability :</b>	-15°C to -25°C/1 year(Do not lower than -25°C)
<b>Observed Band :</b>	50kD

---

<b>Background :</b>	<u>similarity:Contains 4 TPR repeats.,</u>
<b>Function :</b>	<u>similarity:Contains 4 TPR repeats.,</u>
<b>Subcellular Location :</b>	<u>Cell projection, cilium . Colocalizes with EVC and IQCE at the EvC zone of primary cilia. .</u>
<b>Expression :</b>	<u>Colon,Coronary artery,Placenta,</u>

---

## Products Images



Western blot analysis of lysates from RAW264.7 cells, using TTC23 Antibody. The lane on the right is blocked with the synthesized peptide.