

ZNRF2 Polyclonal Antibody

Catalog No :	YT4986
Reactivity :	Human;Mouse
Applications :	IHC;IF;ELISA
Target :	ZNRF2
Gene Name :	ZNRF2
Protein Name :	E3 ubiquitin-protein ligase ZNRF2
Human Gene Id :	223082
Human Swiss Prot No :	Q8NHG8
Mouse Gene Id :	387524
Mouse Swiss Prot No :	Q71FD5
Immunogen :	The antiserum was produced against synthesized peptide derived from human ZNRF2. AA range:161-210
Specificity :	ZNRF2 Polyclonal Antibody detects endogenous levels of ZNRF2 protein.
Formulation :	Liquid in PBS containing 50% glycerol, 0.5% BSA and 0.02% sodium azide.
Source :	Polyclonal, Rabbit,IgG
Dilution :	IHC 1:100 - 1:300. IF 1:200 - 1:1000. ELISA: 1:20000. Not yet tested in other applications.
Purification :	The antibody was affinity-purified from rabbit antiserum by affinity-chromatography using epitope-specific immunogen.
Concentration :	1 mg/ml
Storage Stability :	-15°C to -25°C/1 year(Do not lower than -25°C)

Molecularweight : 24kD

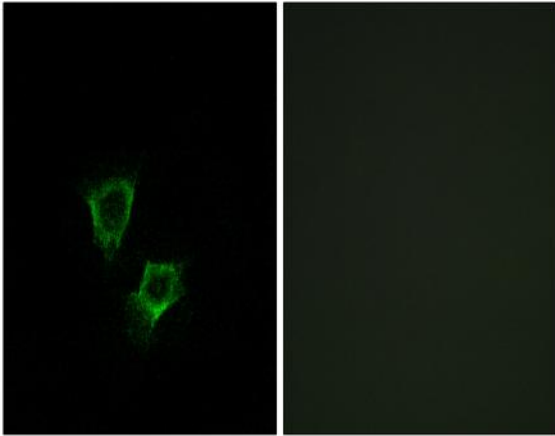
Background : domain:The RING-type zinc finger domain is required for E3 ligase activity.,function:May play a role in the establishment and maintenance of neuronal transmission and plasticity via its ubiquitin ligase activity. E3 ubiquitin ligases accept ubiquitin from an E2 ubiquitin-conjugating enzyme in the form of a thioester and then directly transfer the ubiquitin to targeted substrates.,pathway:Protein modification; protein ubiquitination.,PTM:Phosphorylated upon DNA damage, probably by ATM or ATR.,similarity:Contains 1 RING-type zinc finger.,subcellular location:Present in presynaptic plasma membranes in neurons.,subunit:Interacts with UBE2N.,tissue specificity:Highly expressed in the brain, with higher expression during development than in adult. Expressed also in mammary glands, testis, colon and kidney.,

Function : domain:The RING-type zinc finger domain is required for E3 ligase activity.,function:May play a role in the establishment and maintenance of neuronal transmission and plasticity via its ubiquitin ligase activity. E3 ubiquitin ligases accept ubiquitin from an E2 ubiquitin-conjugating enzyme in the form of a thioester and then directly transfer the ubiquitin to targeted substrates.,pathway:Protein modification; protein ubiquitination.,PTM:Phosphorylated upon DNA damage, probably by ATM or ATR.,similarity:Contains 1 RING-type zinc finger.,subcellular location:Present in presynaptic plasma membranes in neurons.,subunit:Interacts with UBE2N.,tissue specificity:Highly expressed in the brain, with higher expression during development than in adult. Expressed also in mammary glands, testis, colon and kidney.,

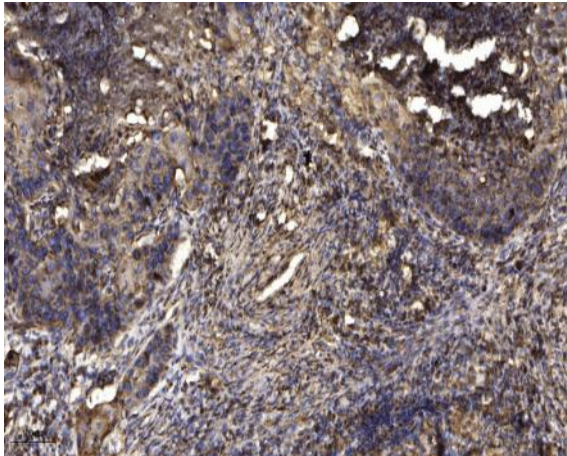
Subcellular Location : Endosome membrane ; Peripheral membrane protein . Lysosome membrane ; Peripheral membrane protein . Cell junction, synapse, presynaptic cell membrane ; Peripheral membrane protein .

Expression : Highly expressed in the brain, with higher expression during development than in adult. Expressed also in mammary glands, testis, colon and kidney.

Products Images



Immunofluorescence analysis of A549 cells, using ZNRF2 Antibody. The picture on the right is blocked with the synthesized peptide.



Immunohistochemical analysis of paraffin-embedded human Squamous cell carcinoma of lung. 1, Antibody was diluted at 1:200(4° overnight). 2, Tris-EDTA,pH9.0 was used for antigen retrieval. 3,Secondary antibody was diluted at 1:200(room temperature, 45min).