

UBE2A/B Polyclonal Antibody

Catalog No :	YT5081
Reactivity :	Human;Mouse;Rat
Applications :	WB;IHC;IF;ELISA
Target :	UBE2A/B
Fields :	>>Ubiquitin mediated proteolysis
Gene Name :	UBE2A/UBE2B
Protein Name :	Ubiquitin-conjugating enzyme E2 A/Ubiquitin-conjugating enzyme E2 B
Human Gene Id :	7320
Human Swiss Prot No :	P49459/P63146
Rat Gene Id :	81816
Rat Swiss Prot No :	P63149
Immunogen :	Synthesized peptide derived from the C-terminal region of human UBE2A/B.
Specificity :	UBE2A/B Polyclonal Antibody detects endogenous levels of UBE2A/B protein.
Formulation :	Liquid in PBS containing 50% glycerol, 0.5% BSA and 0.02% sodium azide.
Source :	Polyclonal, Rabbit,IgG
Dilution :	WB 1:500 - 1:2000. IHC: 1:100-300 ELISA: 1:10000.. IF 1:50-200
Purification :	The antibody was affinity-purified from rabbit antiserum by affinity-chromatography using epitope-specific immunogen.
Concentration :	1 mg/ml

Storage Stability : -15°C to -25°C/1 year(Do not lower than -25°C)

Observed Band : 17kD

Cell Pathway : Ubiquitin mediated proteolysis;

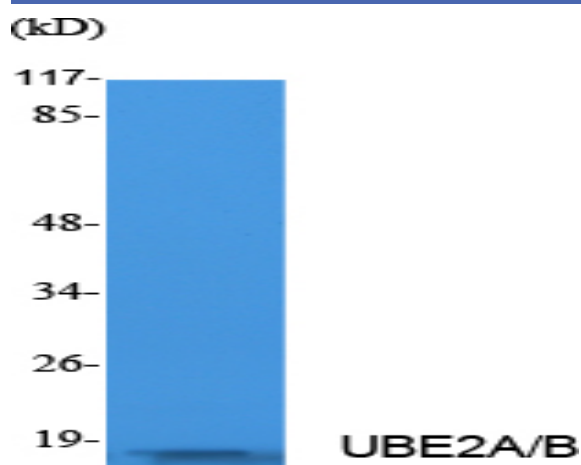
Background : The modification of proteins with ubiquitin is an important cellular mechanism for targeting abnormal or short-lived proteins for degradation. Ubiquitination involves at least three classes of enzymes: ubiquitin-activating enzymes, ubiquitin-conjugating enzymes, and ubiquitin-protein ligases. This gene encodes a member of the E2 ubiquitin-conjugating enzyme family. This enzyme is required for post-replicative DNA damage repair, and may play a role in transcriptional regulation. Mutations in this gene are associated with mental retardation. Alternative splicing results in multiple transcript variants. [provided by RefSeq, Aug 2013],

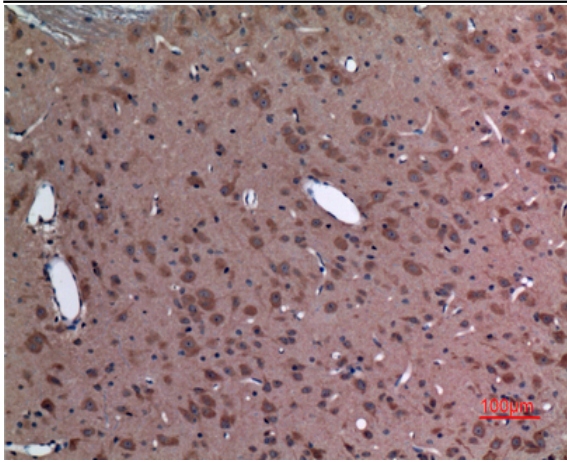
Function : catalytic activity:ATP + ubiquitin + protein lysine = AMP + diphosphate + protein N-ubiquityllysine.,caution:The sequence shown here is derived from an Ensembl automatic analysis pipeline and should be considered as preliminary data.,function:Catalyzes the covalent attachment of ubiquitin to other proteins. Required for postreplication repair of UV-damaged DNA.,pathway:Protein modification; protein ubiquitination.,similarity:Belongs to the ubiquitin-conjugating enzyme family.,subunit:Interacts with RAD18.,

Subcellular Location : chromatin,nuclear chromatin,XY body,cytoplasm,cytosol,HULC complex,

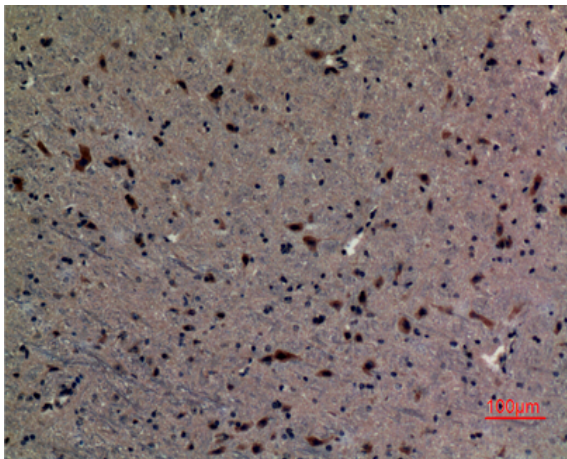
Expression : Lung,Skin,Subthalamic nucleus,Thyroid,

Products Images





Immunohistochemical analysis of paraffin-embedded rat-brain, antibody was diluted at 1:100



Immunohistochemical analysis of paraffin-embedded mouse-brain, antibody was diluted at 1:100