

ATP1AL1 Polyclonal Antibody

Catalog No :	YT5099
Reactivity :	Human;Rat
Applications :	WB;ELISA
Target :	ATP1AL1
Fields :	>>Oxidative phosphorylation;>>Metabolic pathways
Gene Name :	ATP12A
Protein Name :	Potassium-transporting ATPase alpha chain 2
Human Gene Id :	479
Human Swiss Prot No :	P54707
Mouse Swiss Prot No :	Q9Z1W8
Rat Swiss Prot No :	P54708
Immunogen :	Synthesized peptide derived from ATP1AL1 . at AA range: 380-460
Specificity :	ATP1AL1 Polyclonal Antibody detects endogenous levels of ATP1AL1 protein.
Formulation :	Liquid in PBS containing 50% glycerol, 0.5% BSA and 0.02% sodium azide.
Source :	Polyclonal, Rabbit,IgG
Dilution :	WB 1:500 - 1:2000. ELISA: 1:20000. Not yet tested in other applications.
Purification :	The antibody was affinity-purified from rabbit antiserum by affinity-chromatography using epitope-specific immunogen.
Concentration :	1 mg/ml

Storage Stability : -15°C to -25°C/1 year(Do not lower than -25°C)

Observed Band : 115kD

Cell Pathway : Oxidative phosphorylation;

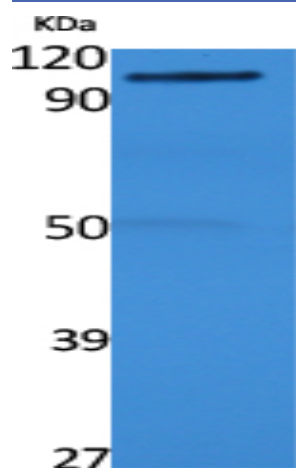
Background : The protein encoded by this gene belongs to the family of P-type cation transport ATPases. This gene encodes a catalytic subunit of the ouabain-sensitive H⁺/K⁺-ATPase that catalyzes the hydrolysis of ATP coupled with the exchange of H⁽⁺⁾ and K⁽⁺⁾ ions across the plasma membrane. It is also responsible for potassium absorption in various tissues. Two transcript variants encoding different isoforms have been found for this gene. [provided by RefSeq, Jun 2010],

Function : catalytic activity:ATP + H₂O + H⁽⁺⁾(In) + K⁽⁺⁾(Out) = ADP + phosphate + H⁽⁺⁾(Out) + K⁽⁺⁾(In).,function:Catalyzes the hydrolysis of ATP coupled with the exchange of H⁽⁺⁾ and K⁽⁺⁾ ions across the plasma membrane. Responsible for potassium absorption in various tissues.,similarity:Belongs to the cation transport ATPase (P-type) family. Type IIC subfamily.,subunit:Composed of two subunits: alpha (catalytic) and beta.,tissue specificity:Found in skin and kidney.,

Subcellular Location : Apical cell membrane ; Multi-pass membrane protein .

Expression : Expressed in airway epithelial cells (at protein level) (PubMed:29391451). Found in skin and kidney. Detected in prostate basal cells (at protein level). Expression is increased in benign prostate hyperplasia and tumor tissues (at protein level).

Products Images



ATP1AL1

Western Blot analysis of extracts from rat stomach, using ATP1AL1 Polyclonal Antibody. Secondary antibody(catalog#:RS0002) was diluted at 1:20000