

## Wee 2 Polyclonal Antibody

<b>Catalog No :</b>	YT4904
<b>Reactivity :</b>	Human;Mouse
<b>Applications :</b>	WB;ELISA
<b>Target :</b>	Wee 2
<b>Fields :</b>	>>Cell cycle;>>Human immunodeficiency virus 1 infection
<b>Gene Name :</b>	WEE2
<b>Protein Name :</b>	Wee1-like protein kinase 2
<b>Human Gene Id :</b>	494551
<b>Human Swiss Prot No :</b>	P0C1S8
<b>Mouse Swiss Prot No :</b>	Q66JT0
<b>Immunogen :</b>	The antiserum was produced against synthesized peptide derived from human WEE2. AA range:151-200
<b>Specificity :</b>	Wee 2 Polyclonal Antibody detects endogenous levels of Wee 2 protein.
<b>Formulation :</b>	Liquid in PBS containing 50% glycerol, 0.5% BSA and 0.02% sodium azide.
<b>Source :</b>	Polyclonal, Rabbit,IgG
<b>Dilution :</b>	WB 1:500 - 1:2000. ELISA: 1:5000. Not yet tested in other applications.
<b>Purification :</b>	The antibody was affinity-purified from rabbit antiserum by affinity-chromatography using epitope-specific immunogen.
<b>Concentration :</b>	1 mg/ml
<b>Storage Stability :</b>	-15°C to -25°C/1 year(Do not lower than -25°C)

**Observed Band :** 60kD

**Cell Pathway :** Cell\_Cycle\_G1S;Cell\_Cycle\_G2M\_DNA;

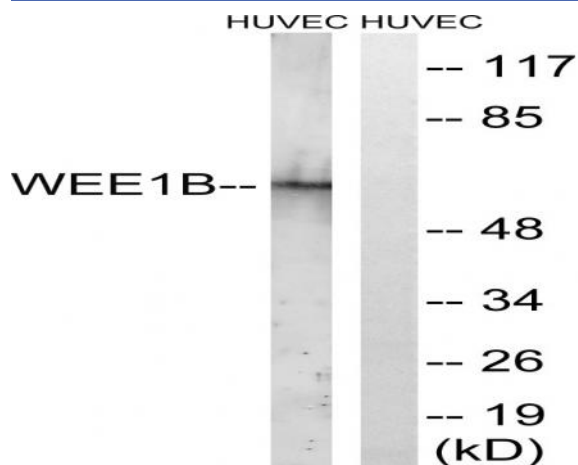
**Background :** catalytic activity:ATP + a [protein]-L-tyrosine = ADP + a [protein]-L-tyrosine phosphate.,function:Phosphorylates and inhibits CDC2. May act as a negative regulator of entry into mitosis (G2 to M transition).,PTM:Phosphorylated .,similarity:Belongs to the protein kinase superfamily. Ser/Thr protein kinase family. WEE1 subfamily.,similarity:Contains 1 protein kinase domain.,tissue specificity:Expressed in testis.,

**Function :** catalytic activity:ATP + a [protein]-L-tyrosine = ADP + a [protein]-L-tyrosine phosphate.,function:Phosphorylates and inhibits CDC2. May act as a negative regulator of entry into mitosis (G2 to M transition).,PTM:Phosphorylated .,similarity:Belongs to the protein kinase superfamily. Ser/Thr protein kinase family. WEE1 subfamily.,similarity:Contains 1 protein kinase domain.,tissue specificity:Expressed in testis.,

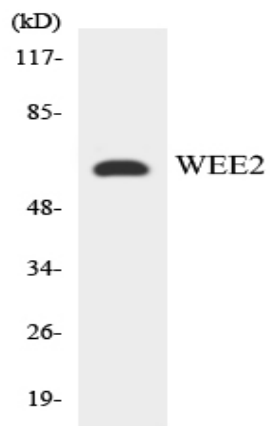
**Subcellular Location :** Nucleus .

**Expression :** Expressed in oocytes (at protein level) (PubMed:29606300). May also be expressed in testis (PubMed:11029659).

## Products Images



Western blot analysis of lysates from HUVEC cells, using WEE2 Antibody. The lane on the right is blocked with the synthesized peptide.



Western blot analysis of the lysates from K562 cells using WEE2 antibody.