

ZAR1 Polyclonal Antibody

Catalog No :	YT4933
Reactivity :	Human;Rat;Mouse;
Applications :	WB;IHC;IF;ELISA
Target :	ZAR1
Gene Name :	ZAR1
Protein Name :	Zygote arrest protein 1
Human Gene Id :	326340
Human Swiss Prot No :	Q86SH2
Mouse Swiss Prot No :	Q80SU3
Immunogen :	Synthesized peptide derived from the Internal region of human ZAR1.
Specificity :	ZAR1 Polyclonal Antibody detects endogenous levels of ZAR1 protein.
Formulation :	Liquid in PBS containing 50% glycerol, 0.5% BSA and 0.02% sodium azide.
Source :	Polyclonal, Rabbit,IgG
Dilution :	IHC: 100-300.WB 1:500 - 1:2000. ELISA: 1:20000.. IF 1:50-200
Purification :	The antibody was affinity-purified from rabbit antiserum by affinity-chromatography using epitope-specific immunogen.
Concentration :	1 mg/ml
Storage Stability :	-15°C to -25°C/1 year(Do not lower than -25°C)
Observed Band :	45kD

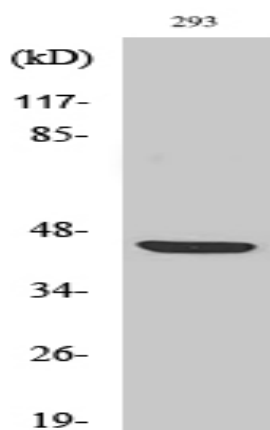
Background : This maternal effect gene is oocyte-specific and encodes a protein that is thought to function in the initiation of embryogenesis. A similar protein in mouse is required for female fertility. [provided by RefSeq, Jul 2013],

Function : function:Essential for female fertility. May play a role in the oocyte-to-embryo transition.,similarity:Belongs to the ZAR1 family.,tissue specificity:Ovary and testis.,

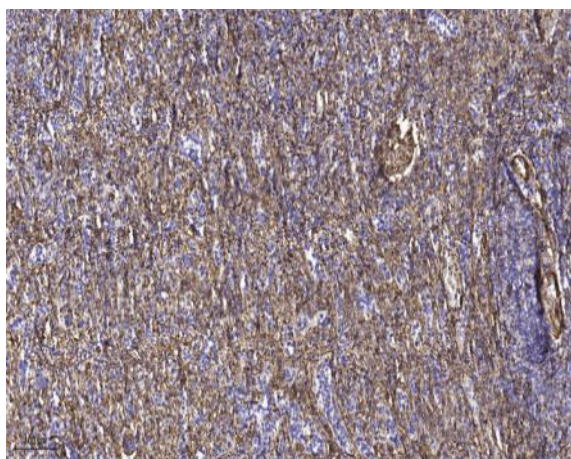
Subcellular Location : Cytoplasm .

Expression : Ovary and testis.

Products Images



Western Blot analysis of various cells using ZAR1 Polyclonal Antibody. Secondary antibody(catalog#:RS0002) was diluted at 1:20000



Immunohistochemical analysis of paraffin-embedded human spleen tissue. 1,primary Antibody was diluted at 1:200(4° overnight). 2, Sodium citrate pH 6.0 was used for antigen retrieval(>98 °C,20min). 3,Secondary antibody was diluted at 1:200