

ZIP1 Polyclonal Antibody

Catalog No :	YT4947
Reactivity :	Human;Mouse
Applications :	WB;ELISA
Target :	ZIP1
Fields :	>>Alzheimer disease;>>Parkinson disease
Gene Name :	SLC39A1
Protein Name :	Zinc transporter ZIP1
Human Gene Id :	27173
Human Swiss Prot No :	Q9NY26
Mouse Swiss Prot No :	Q9QZ03
Immunogen :	The antiserum was produced against synthesized peptide derived from human SLC39A1. AA range:111-160
Specificity :	ZIP1 Polyclonal Antibody detects endogenous levels of ZIP1 protein.
Formulation :	Liquid in PBS containing 50% glycerol, 0.5% BSA and 0.02% sodium azide.
Source :	Polyclonal, Rabbit,IgG
Dilution :	WB 1:500 - 1:2000. ELISA: 1:5000. Not yet tested in other applications.
Purification :	The antibody was affinity-purified from rabbit antiserum by affinity-chromatography using epitope-specific immunogen.
Concentration :	1 mg/ml
Storage Stability :	-15°C to -25°C/1 year(Do not lower than -25°C)

Observed Band : 38kD

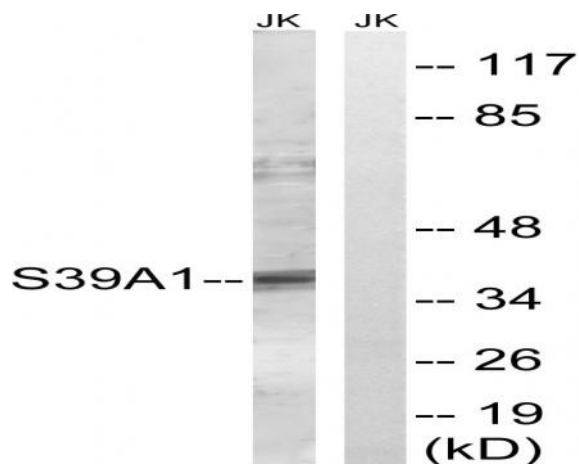
Background : This gene encodes a member of the zinc-iron permease family. The encoded protein is localized to the cell membrane and acts as a zinc uptake transporter. This gene has been linked to prostate cancer, breast cancer, and Alzheimer's disease. Alternative splicing results in multiple transcript variants. [provided by RefSeq, Dec 2012],

Function : function:Mediates zinc uptake. May function as a major endogenous zinc uptake transporter in many cells of the body. Responsible for the rapid uptake and accumulation of physiologically effective zinc in prostate cells.,miscellaneous:Inhibited by Ni(2+) ions. Fe(2+) ions do not inhibit zinc uptake.,similarity:Belongs to the ZIP transporter (TC 2.A.5) family.,subcellular location:Shows a vesicular localization corresponding partially to the endoplasmic reticulum in several epithelial cell lines.,tissue specificity:Ubiquitous. Expressed in most adult and fetal tissues including the epidermis.,

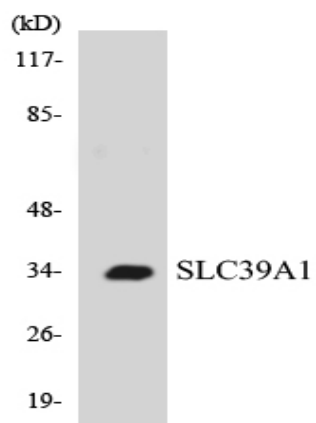
Subcellular Location : Cell membrane ; Multi-pass membrane protein . Endoplasmic reticulum membrane ; Multi-pass membrane protein . Shows a vesicular localization corresponding partially to the endoplasmic reticulum in several epithelial cell lines.

Expression : Ubiquitous. Expressed in most adult and fetal tissues including the epidermis.

Products Images



Western blot analysis of lysates from Jurkat cells, using SLC39A1 Antibody. The lane on the right is blocked with the synthesized peptide.



Western blot analysis of the lysates from COLO205 cells using SLC39A1 antibody.