

## ZnT-1 Polyclonal Antibody

<b>Catalog No :</b>	YT4987
<b>Reactivity :</b>	Human;Rat;Mouse;
<b>Applications :</b>	WB;IHC;IF;ELISA
<b>Target :</b>	ZnT-1
<b>Fields :</b>	>>Mineral absorption
<b>Gene Name :</b>	SLC30A1
<b>Protein Name :</b>	Zinc transporter 1
<b>Human Gene Id :</b>	7779
<b>Human Swiss Prot No :</b>	Q9Y6M5
<b>Mouse Swiss Prot No :</b>	Q60738
<b>Immunogen :</b>	The antiserum was produced against synthesized peptide derived from human SLC30A1. AA range:201-250
<b>Specificity :</b>	ZnT-1 Polyclonal Antibody detects endogenous levels of ZnT-1 protein.
<b>Formulation :</b>	Liquid in PBS containing 50% glycerol, 0.5% BSA and 0.02% sodium azide.
<b>Source :</b>	Polyclonal, Rabbit,IgG
<b>Dilution :</b>	WB 1:500 - 1:2000. IHC 1:100 - 1:300. ELISA: 1:5000.. IF 1:50-200
<b>Purification :</b>	The antibody was affinity-purified from rabbit antiserum by affinity-chromatography using epitope-specific immunogen.
<b>Concentration :</b>	1 mg/ml
<b>Storage Stability :</b>	-15°C to -25°C/1 year(Do not lower than -25°C)

**Observed Band :** 55kD

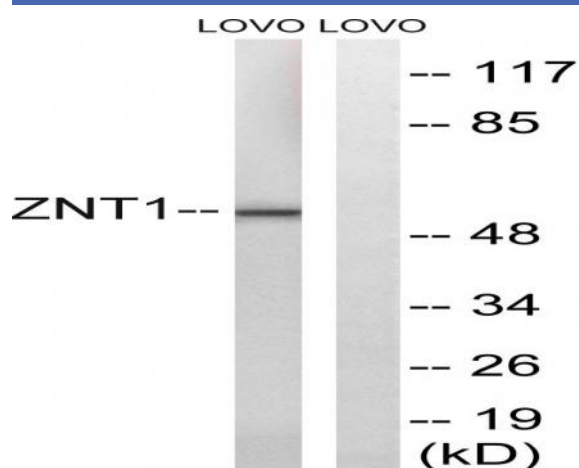
**Background :** function:May be involved in zinc transport out of the cell.,similarity:Belongs to the cation diffusion facilitator (CDF) transporter (TC 2.A.4) family. SLC30A subfamily.,subunit:Multimer.,

**Function :** function:May be involved in zinc transport out of the cell.,similarity:Belongs to the cation diffusion facilitator (CDF) transporter (TC 2.A.4) family. SLC30A subfamily.,subunit:Multimer.,

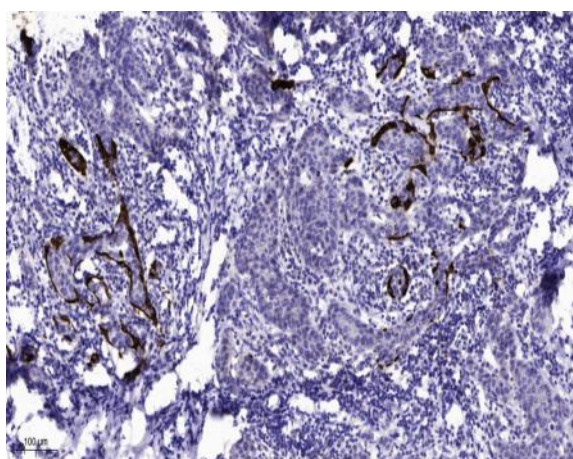
**Subcellular Location :** Cell membrane ; Multi-pass membrane protein .

**Expression :** Prostate cancer,

## Products Images



Western blot analysis of lysates from LOVO cells, using SLC30A1 Antibody. The lane on the right is blocked with the synthesized peptide.



Immunohistochemical analysis of paraffin-embedded human Breast cancer. 1, Antibody was diluted at 1:200(4° overnight). 2, Tris-EDTA,pH9.0 was used for antigen retrieval. 3,Secondary antibody was diluted at 1:200(room temperature, 45min).