

**CD300g Polyclonal Antibody**

<b>Catalog No :</b>	YT5272
<b>Reactivity :</b>	Human;Rat;Mouse;
<b>Applications :</b>	WB;IHC;IF;ELISA
<b>Target :</b>	CD300g
<b>Gene Name :</b>	CD300LG
<b>Protein Name :</b>	CMRF35-like molecule 9
<b>Human Gene Id :</b>	146894
<b>Human Swiss Prot No :</b>	Q6UXG3
<b>Mouse Gene Id :</b>	52685
<b>Mouse Swiss Prot No :</b>	Q1ERP8
<b>Immunogen :</b>	The antiserum was produced against synthesized peptide derived from the Internal region of human CD300LG. AA range:41-90
<b>Specificity :</b>	CD300g Polyclonal Antibody detects endogenous levels of CD300g protein.
<b>Formulation :</b>	Liquid in PBS containing 50% glycerol, 0.5% BSA and 0.02% sodium azide.
<b>Source :</b>	Polyclonal, Rabbit,IgG
<b>Dilution :</b>	WB 1:500 - 1:2000. IHC: 1:100-300 ELISA: 1:20000.. IF 1:50-200
<b>Purification :</b>	The antibody was affinity-purified from rabbit antiserum by affinity-chromatography using epitope-specific immunogen.
<b>Concentration :</b>	1 mg/ml
<b>Storage Stability :</b>	-15°C to -25°C/1 year(Do not lower than -25°C)

**Observed Band :** 36kD

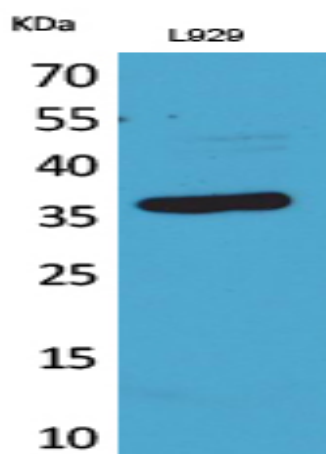
**Background :** Members of the CD300 (see MIM 606786)-like (CD300L) family, such as CD300LG, are widely expressed on hematopoietic cells. All CD300L proteins are type I cell surface glycoproteins that contain a single immunoglobulin (Ig) V-like domain (Takatsu et al., 2006 [PubMed 16876123]). [supplied by OMIM, Mar 2008],

**Function :** domain:Ig-like V-type domain mediates binding to lymphocyte.,function:Receptor which may mediate L-selectin-dependent lymphocyte rollings. Binds SELL in a calcium dependent manner. Binds lymphocyte.,PTM:O-glycosylated with sialylated oligosaccharides.,similarity:Belongs to the CD300 family.,similarity:Contains 1 Ig-like V-type (immunoglobulin-like) domain.,tissue specificity:Highly expressed in heart, skeletal muscle and placenta.,

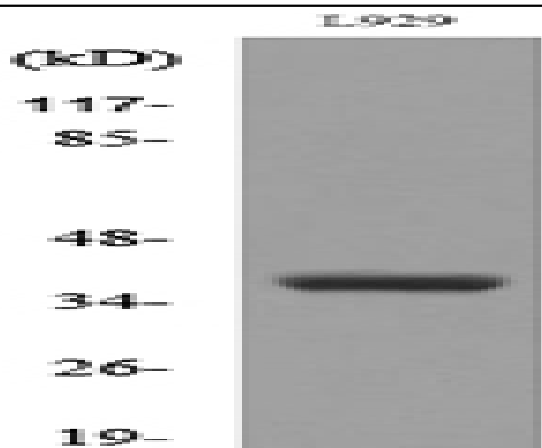
**Subcellular Location :** Apical cell membrane ; Single-pass type I membrane protein . Basolateral cell membrane ; Single-pass type I membrane protein . Endosome, multivesicular body membrane ; Single-pass type I membrane protein . Transcytoses across the cytoplasm. .

**Expression :** Highly expressed in heart, skeletal muscle and placenta.

## Products Images



Western Blot analysis of L929 cells using CD300g Polyclonal Antibody. Secondary antibody(catalog#:RS0002) was diluted at 1:20000



Western blot analysis of lysate from L929 cells, using CD300LG Antibody.