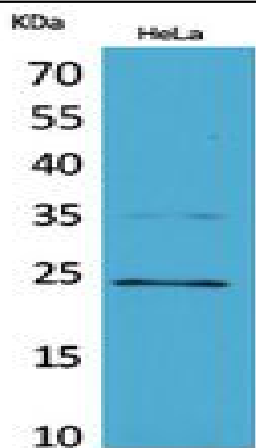


Rab 5A Polyclonal Antibody

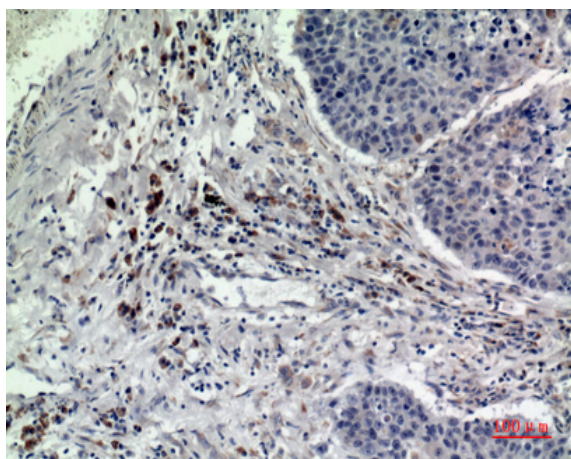
| | |
|------------------------------|---|
| Catalog No : | YT5456 |
| Reactivity : | Human;Mouse;Rat |
| Applications : | WB;IHC;IF;ELISA |
| Target : | Rab 5A |
| Fields : | >>Ras signaling pathway;>>Endocytosis;>>Phagosome;>>Vasopressin-regulated water reabsorption;>>Amyotrophic lateral sclerosis;>>Pathways of neurodegeneration - multiple diseases;>>Salmonella infection;>>Amoebiasis;>>Tuberculosis |
| Gene Name : | RAB5A |
| Protein Name : | Ras-related protein Rab-5A |
| Human Gene Id : | 5868 |
| Human Swiss Prot No : | P20339 |
| Mouse Gene Id : | 271457 |
| Mouse Swiss Prot No : | Q9CQD1 |
| Immunogen : | The antiserum was produced against synthesized peptide derived from the Internal region of human RAB5A. AA range:71-120 |
| Specificity : | Rab 5A Polyclonal Antibody detects endogenous levels of Rab 5A protein. |
| Formulation : | Liquid in PBS containing 50% glycerol, 0.5% BSA and 0.02% sodium azide. |
| Source : | Polyclonal, Rabbit,IgG |
| Dilution : | WB 1:500 - 1:2000. IHC: 1:100-1:300. ELISA: 1:20000.. IF 1:50-200 |
| Purification : | The antibody was affinity-purified from rabbit antiserum by affinity-chromatography using epitope-specific immunogen. |

| | |
|-------------------------------|---|
| Concentration : | 1 mg/ml |
| Storage Stability : | -15°C to -25°C/1 year(Do not lower than -25°C) |
| Observed Band : | 24kD |
| Cell Pathway : | Endocytosis;Amyotrophic lateral sclerosis (ALS); |
| Background : | enzyme regulation:Regulated by guanine nucleotide exchange factors (GEFs) which promote the exchange of bound GDP for free GTP.,function:Required for the fusion of plasma membranes and early endosomes.,similarity:Belongs to the small GTPase superfamily. Rab family.,subcellular location:Enriched in stage I melanosomes.,subunit:Binds EEA1. Interacts with RIN1 and GAPVD1, which regulate its pathway, probably by acting as a GEF. Interacts with ALS2CL, UNC84B, ZFYVE20 and RUFY1. Interacts with SGSM1 and SGSM3., |
| Function : | enzyme regulation:Regulated by guanine nucleotide exchange factors (GEFs) which promote the exchange of bound GDP for free GTP.,function:Required for the fusion of plasma membranes and early endosomes.,similarity:Belongs to the small GTPase superfamily. Rab family.,subcellular location:Enriched in stage I melanosomes.,subunit:Binds EEA1. Interacts with RIN1 and GAPVD1, which regulate its pathway, probably by acting as a GEF. Interacts with ALS2CL, UNC84B, ZFYVE20 and RUFY1. Interacts with SGSM1 and SGSM3., |
| Subcellular Location : | Cell membrane ; Lipid-anchor ; Cytoplasmic side . Early endosome membrane ; Lipid-anchor . Melanosome . Cytoplasmic vesicle . Cell projection, ruffle . Membrane . Cytoplasm, cytosol . Cytoplasmic vesicle, phagosome membrane . Endosome membrane . Enriched in stage I melanosomes (PubMed:17081065). Alternates between membrane-bound and cytosolic forms (Probable). . |
| Expression : | Brain,Cervix,Cervix carcinoma,Placenta, |

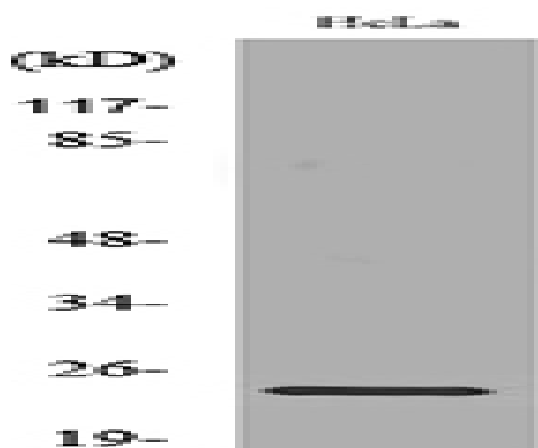
Products Images



Western Blot analysis of HeLa cells using Rab 5A Polyclonal Antibody. Secondary antibody(catalog#:RS0002) was diluted at 1:20000



Immunohistochemical analysis of paraffin-embedded human-lung, antibody was diluted at 1:100



Western blot analysis of lysate from HeLa cells, using RAB5A Antibody.