

**BOCT Polyclonal Antibody**

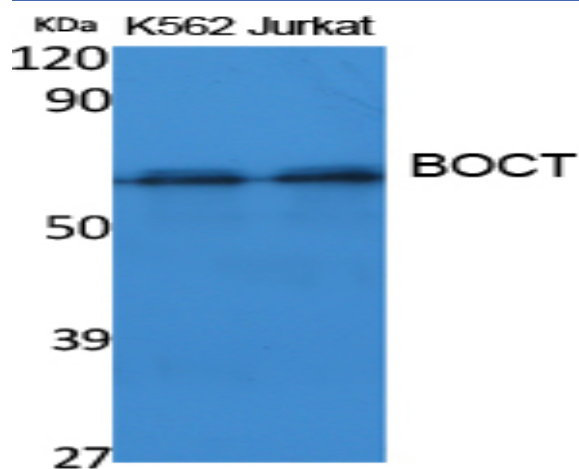
<b>Catalog No :</b>	YT5062
<b>Reactivity :</b>	Human;Mouse;Rat
<b>Applications :</b>	WB;IHC;IF;ELISA
<b>Target :</b>	BOCT
<b>Gene Name :</b>	SLC22A17
<b>Protein Name :</b>	Solute carrier family 22 member 17
<b>Human Gene Id :</b>	51310
<b>Human Swiss Prot No :</b>	Q8WUG5
<b>Mouse Gene Id :</b>	59049
<b>Mouse Swiss Prot No :</b>	Q9D9E0
<b>Rat Gene Id :</b>	305886
<b>Rat Swiss Prot No :</b>	Q9P290
<b>Immunogen :</b>	Synthesized peptide derived from the Internal region of human BOCT.
<b>Specificity :</b>	BOCT Polyclonal Antibody detects endogenous levels of BOCT protein.
<b>Formulation :</b>	Liquid in PBS containing 50% glycerol, 0.5% BSA and 0.02% sodium azide.
<b>Source :</b>	Polyclonal, Rabbit,IgG
<b>Dilution :</b>	WB 1:500 - 1:2000. IHC: 1:100-300 ELISA: 1:5000.. IF 1:50-200
<b>Purification :</b>	The antibody was affinity-purified from rabbit antiserum by affinity-chromatography using epitope-specific immunogen.

---

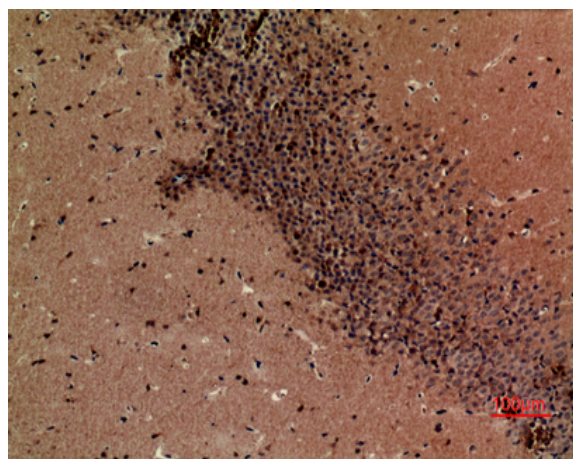
<b>Concentration :</b>	1 mg/ml
<b>Storage Stability :</b>	-15°C to -25°C/1 year(Do not lower than -25°C)
<b>Observed Band :</b>	57kD
<b>Background :</b>	similarity:Belongs to the major facilitator superfamily. Organic cation transporter family.,tissue specificity:Expressed in brain.,
<b>Function :</b>	similarity:Belongs to the major facilitator superfamily. Organic cation transporter family.,tissue specificity:Expressed in brain.,
<b>Subcellular Location :</b>	Cell membrane ; Multi-pass membrane protein . Vacuole membrane ; Multi-pass membrane protein . Upon LCN2-binding, it is internalized.
<b>Expression :</b>	Expressed in brain.

---

## Products Images



Western Blot analysis of extracts from K562, Jurkat cells, using BOCT Polyclonal Antibody. Secondary antibody(catalog#:RS0002) was diluted at 1:20000



Immunohistochemical analysis of paraffin-embedded mouse-brain, antibody was diluted at 1:100