

## SV2C Polyclonal Antibody

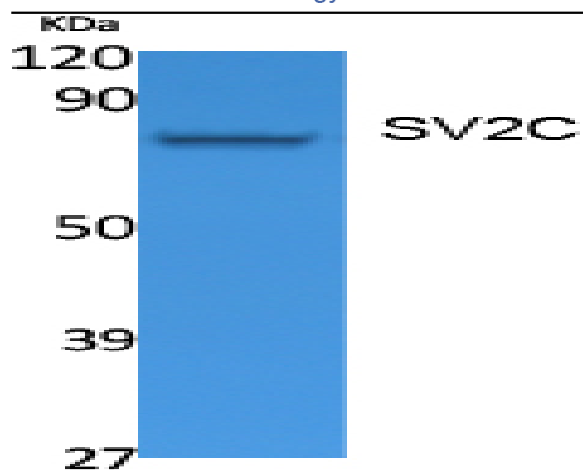
<b>Catalog No :</b>	YT5077
<b>Reactivity :</b>	Human;Mouse;Rat
<b>Applications :</b>	WB;IHC;IF;ELISA
<b>Target :</b>	SV2C
<b>Fields :</b>	>>ECM-receptor interaction
<b>Gene Name :</b>	SV2C
<b>Protein Name :</b>	Synaptic vesicle glycoprotein 2C
<b>Human Gene Id :</b>	22987
<b>Human Swiss Prot No :</b>	Q496J9
<b>Mouse Gene Id :</b>	75209
<b>Mouse Swiss Prot No :</b>	Q69ZS6
<b>Rat Gene Id :</b>	29643
<b>Rat Swiss Prot No :</b>	Q9Z2I6
<b>Immunogen :</b>	Synthesized peptide derived from the Internal region of human SV2C. AA range 330-390
<b>Specificity :</b>	SV2C Polyclonal Antibody detects endogenous levels of SV2C protein.
<b>Formulation :</b>	Liquid in PBS containing 50% glycerol, 0.5% BSA and 0.02% sodium azide.
<b>Source :</b>	Polyclonal, Rabbit,IgG
<b>Dilution :</b>	WB 1:500 - 1:2000. IHC: 1:100-300 ELISA: 1:20000.. IF 1:50-200

---

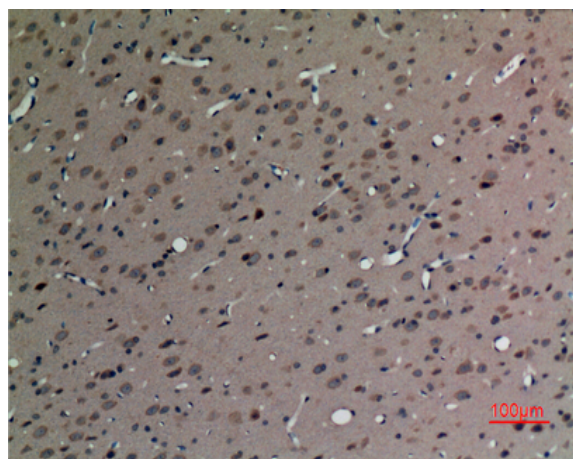
<b>Purification :</b>	The antibody was affinity-purified from rabbit antiserum by affinity-chromatography using epitope-specific immunogen.
<b>Concentration :</b>	1 mg/ml
<b>Storage Stability :</b>	-15°C to -25°C/1 year(Do not lower than -25°C)
<b>Observed Band :</b>	82kD
<b>Cell Pathway :</b>	ECM-receptor interaction;
<b>Background :</b>	function:Plays a role in the control of regulated secretion in neural and endocrine cells, enhancing selectively low-frequency neurotransmission. Positively regulates vesicle fusion by maintaining the readily releasable pool of secretory vesicles.,PTM:N-glycosylated.,similarity:Belongs to the major facilitator superfamily.,subcellular location:Enriched in small synaptic vesicles and adrenal microsomes, not present in chromaffin granules. Associated with both insulin granules and synaptic-like microvesicles in insulin-secreting cells of the pancreas.,subunit:Interacts with SYT1 in a calcium-dependent manner.,
<b>Function :</b>	function:Plays a role in the control of regulated secretion in neural and endocrine cells, enhancing selectively low-frequency neurotransmission. Positively regulates vesicle fusion by maintaining the readily releasable pool of secretory vesicles.,PTM:N-glycosylated.,similarity:Belongs to the major facilitator superfamily.,subcellular location:Enriched in small synaptic vesicles and adrenal microsomes, not present in chromaffin granules. Associated with both insulin granules and synaptic-like microvesicles in insulin-secreting cells of the pancreas.,subunit:Interacts with SYT1 in a calcium-dependent manner.,
<b>Subcellular Location :</b>	Cytoplasmic vesicle, secretory vesicle, synaptic vesicle membrane ; Multi-pass membrane protein . Enriched in small synaptic vesicles and adrenal microsomes, not present in chromaffin granules. Associated with both insulin granules and synaptic-like microvesicles in insulin-secreting cells of the pancreas. .
<b>Expression :</b>	Brain,

---

## Products Images



Western Blot analysis of extracts from Jurkat cells, using SV2C Polyclonal Antibody. Secondary antibody (catalog#:RS0002) was diluted at 1:20000



Immunohistochemical analysis of paraffin-embedded rat brain, antibody was diluted at 1:100