

## MPP10 Polyclonal Antibody

<b>Catalog No :</b>	YT5079
<b>Reactivity :</b>	Human;Mouse
<b>Applications :</b>	WB;ELISA;IHC
<b>Target :</b>	MPP10
<b>Fields :</b>	>>Ribosome biogenesis in eukaryotes
<b>Gene Name :</b>	MPHOSPH10
<b>Protein Name :</b>	U3 small nucleolar ribonucleoprotein protein MPP10
<b>Human Gene Id :</b>	10199
<b>Human Swiss Prot No :</b>	O00566
<b>Mouse Swiss Prot No :</b>	Q810V0
<b>Immunogen :</b>	Synthesized peptide derived from MPP10 . at AA range: 60-140
<b>Specificity :</b>	MPP10 Polyclonal Antibody detects endogenous levels of MPP10 protein.
<b>Formulation :</b>	Liquid in PBS containing 50% glycerol, 0.5% BSA and 0.02% sodium azide.
<b>Source :</b>	Polyclonal, Rabbit,IgG
<b>Dilution :</b>	WB 1:500-2000;IHC 1:50-300; ELISA 2000-20000
<b>Purification :</b>	The antibody was affinity-purified from rabbit antiserum by affinity-chromatography using epitope-specific immunogen.
<b>Concentration :</b>	1 mg/ml
<b>Storage Stability :</b>	-15°C to -25°C/1 year(Do not lower than -25°C)

**Observed Band :** 78kD

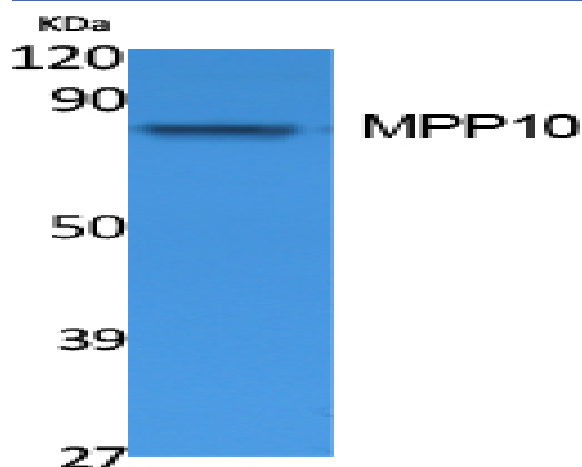
**Background :** This gene encodes a protein that is phosphorylated during mitosis. The protein localizes to the nucleolus during interphase and to the chromosomes during M phase. The protein associates with the U3 small nucleolar ribonucleoprotein 60-80S complexes and may be involved in pre-rRNA processing. [provided by RefSeq, Dec 2010],

**Function :** function:Component of the 60-80S U3 small nucleolar ribonucleoprotein (U3 snoRNP). Required for the early cleavages during pre-18S ribosomal RNA processing.,PTM:Phosphorylated in M (mitotic) phase.,similarity:Belongs to the MPP10 family.,subcellular location:Fibrillar region of the nucleolus. After dissolution of the nucleolus in early M phase becomes associated with chromosomes through metaphase and anaphase. In telophase localized to small cellular prenucleolar bodies that not always contain fibrillarin. The reassociation with nucleolus is preceded by the arrival of fibrillarin.,subunit:Component of a heterotrimeric complex containing IMP3, IMP4 and MPHOSPH10. Interacts with IMP3 and IMP4.,

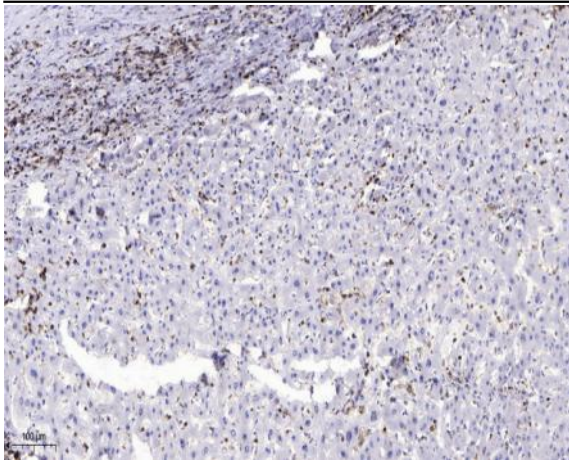
**Subcellular Location :** Nucleus, nucleolus . Chromosome . Fibrillar region of the nucleolus (PubMed:9450966). After dissolution of the nucleolus in early M phase becomes associated with chromosomes through metaphase and anaphase (PubMed:9450966). In telophase localized to small cellular prenucleolar bodies that not always contain fibrillarin (PubMed:9450966). The reassociation with nucleolus is preceded by the arrival of fibrillarin (PubMed:9450966). .

**Expression :** Blood,Brain,Epithelium,Mammary cancer,Placenta,Prostate,

## Products Images



Western Blot analysis of extracts from Jurkat cells, using MPP10 Polyclonal Antibody. Secondary antibody(catalog#:RS0002) was diluted at 1:20000 cells nucleus extracted by Minute TM Cytoplasmic and Nuclear Fractionation kit (SC-003, Inventibiotech, MN, USA).



Immunohistochemical analysis of paraffin-embedded human liver cancer. 1, Antibody was diluted at 1:200(4° overnight). 2, Tris-EDTA,pH9.0 was used for antigen retrieval. 3,Secondary antibody was diluted at 1:200(room temperature, 45min).