

SS-56 Polyclonal Antibody

Catalog No :	YT5082
Reactivity :	Human;Mouse
Applications :	WB;IHC;IF;ELISA
Target :	SS-56
Gene Name :	TRIM68
Protein Name :	E3 ubiquitin-protein ligase TRIM68
Human Gene Id :	55128
Human Swiss Prot No :	Q6AZZ1
Mouse Swiss Prot No :	Q8K243
Immunogen :	Synthesized peptide derived from the Internal region of human SS-56.
Specificity :	SS-56 Polyclonal Antibody detects endogenous levels of SS-56 protein.
Formulation :	Liquid in PBS containing 50% glycerol, 0.5% BSA and 0.02% sodium azide.
Source :	Polyclonal, Rabbit,IgG
Dilution :	WB 1:500 - 1:2000. IHC: 1:100-300 ELISA: 1:40000.. IF 1:50-200
Purification :	The antibody was affinity-purified from rabbit antiserum by affinity-chromatography using epitope-specific immunogen.
Concentration :	1 mg/ml
Storage Stability :	-15°C to -25°C/1 year(Do not lower than -25°C)
Observed Band :	56kD

Background :

This gene encodes a member of the tripartite motif-containing protein family, whose members are characterized by a "really interesting new gene" (RING) finger domain, a zinc-binding B-box motif, and a coiled-coil region. Members of this family function as E3 ubiquitin ligases and are involved in a broad range of biological processes. This gene regulates the activation of nuclear receptors, such as androgen receptor, and has been implicated in development of prostate cancer cells, where its expression increases in response to a downregulation of microRNAs. In addition, this gene participates in viral defense regulation as a negative regulator of interferon-beta. Alternative splicing results in multiple transcript variants. [provided by RefSeq, Jan 2015],

Function :

disease:Target of immune response in patients with systemic lupus erythematosus (SLE), primary Sjogren syndrome or HIV-1 infection.,similarity:Belongs to the TRIM/RBCC family.,similarity:Contains 1 B box-type zinc finger.,similarity:Contains 1 B30.2/SPRY domain.,similarity:Contains 1 RING-type zinc finger.,tissue specificity:Detected in all tissues. High expression is noted in spleen and in fetal liver.,

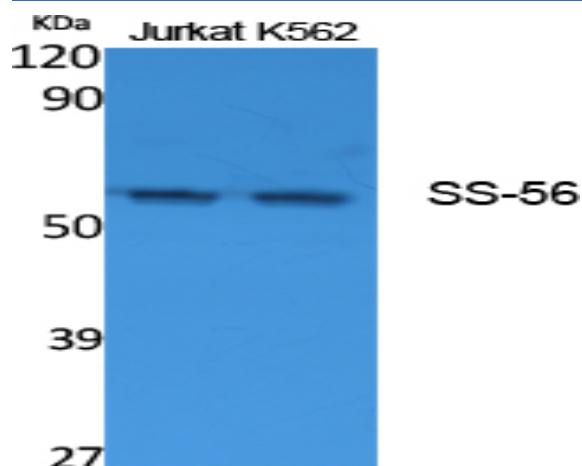
Subcellular Location :

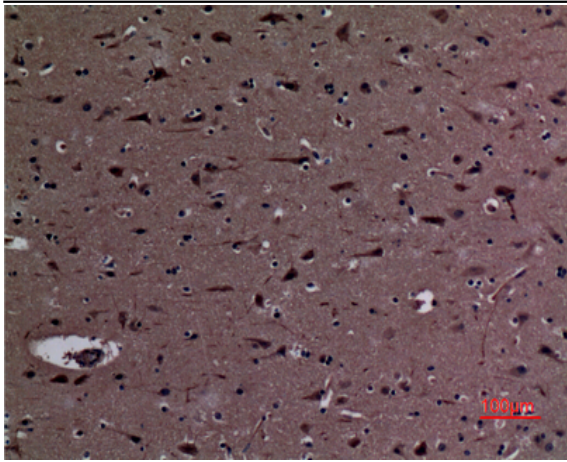
Cytoplasm, perinuclear region. Nucleus. Colocalized with AR in nucleus.

Expression :

Widely expressed. Expressed at high levels in prostate cancer cell lines. Up-regulation could be restricted to androgen-dependent cells.

Products Images





Immunohistochemical analysis of paraffin-embedded human-brain, antibody was diluted at 1:100