

## SCP-2 Polyclonal Antibody

<b>Catalog No :</b>	YT5116
<b>Reactivity :</b>	Human;Rat;Mouse;
<b>Applications :</b>	WB;ELISA;IHC
<b>Target :</b>	SCP-2
<b>Gene Name :</b>	SYCP2
<b>Protein Name :</b>	Synaptonemal complex protein 2
<b>Human Gene Id :</b>	10388
<b>Human Swiss Prot No :</b>	Q9BX26
<b>Mouse Swiss Prot No :</b>	Q9CUU3
<b>Immunogen :</b>	Synthesized peptide derived from the Internal region of human SCP-2.
<b>Specificity :</b>	SCP-2 Polyclonal Antibody detects endogenous levels of SCP-2 protein.
<b>Formulation :</b>	Liquid in PBS containing 50% glycerol, 0.5% BSA and 0.02% sodium azide.
<b>Source :</b>	Polyclonal, Rabbit,IgG
<b>Dilution :</b>	WB 1:500-2000;IHC 1:50-300; ELISA 2000-20000
<b>Purification :</b>	The antibody was affinity-purified from rabbit antiserum by affinity-chromatography using epitope-specific immunogen.
<b>Concentration :</b>	1 mg/ml
<b>Storage Stability :</b>	-15°C to -25°C/1 year(Do not lower than -25°C)
<b>Observed Band :</b>	175kD

**Background :**

The synaptonemal complex is a proteinaceous structure that links homologous chromosomes during the prophase of meiosis. The protein encoded by this gene is a major component of the synaptonemal complex and may bind DNA at scaffold attachment regions. The encoded protein requires synaptonemal complex protein 3, but not 1, for inclusion in the synaptonemal complex. [provided by RefSeq, Jul 2008],

**Function :**

function:Major component of the axial/lateral elements of synaptonemal complexes (SCS) during meiotic prophase. May be involved in the organization of chromatin by temporarily binding to DNA scaffold attachment regions. Requires SYCP3, but not SYCP1, in order to be incorporated into the axial/lateral elements.,similarity:Belongs to the SYCP2 family.,subcellular location:In axial/lateral elements of the tripartite segments of synaptonemal complexes.,subunit:Heterodimer with SYCP3. Interacts with SYCP3, SMC1A and SMC3.,

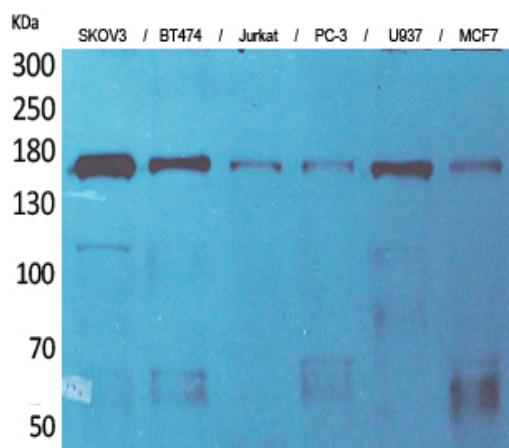
**Subcellular Location :**

Nucleus . Chromosome . In axial/lateral elements of the tripartite segments of synaptonemal complexes. .

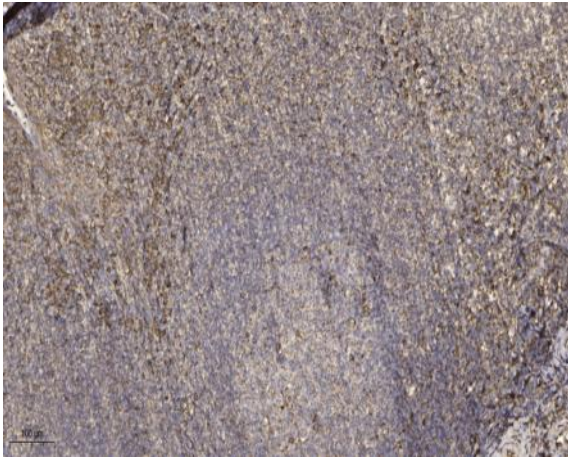
**Expression :**

Kidney,Testis,

## Products Images



Western Blot analysis of SKOV3, BT474, Jurkat, PC-3, U937, MCF7 cells using SCP-2 Polyclonal Antibody. Secondary antibody(catalog#:RS0002) was diluted at 1:20000 cells nucleus extracted by Minute TM Cytoplasmic and Nuclear Fractionation kit (SC-003,Inventbiotech,MN,USA).



Immunohistochemical analysis of paraffin-embedded human tonsil. 1, Antibody was diluted at 1:200(4 ° overnight). 2, Tris-EDTA,pH9.0 was used for antigen retrieval. 3,Secondary antibody was diluted at 1:200(room temperature, 45min).