

## SCP-3 Polyclonal Antibody

<b>Catalog No :</b>	YT5117
<b>Reactivity :</b>	Human;Mouse
<b>Applications :</b>	WB;ELISA;IHC
<b>Target :</b>	SCP-3
<b>Fields :</b>	>>Homologous recombination
<b>Gene Name :</b>	SYCP3
<b>Protein Name :</b>	Synaptonemal complex protein 3
<b>Human Gene Id :</b>	50511
<b>Human Swiss Prot No :</b>	Q8IZU3
<b>Mouse Gene Id :</b>	20962
<b>Mouse Swiss Prot No :</b>	P70281
<b>Immunogen :</b>	Synthesized peptide derived from the Internal region of human SCP-3.
<b>Specificity :</b>	SCP-3 Polyclonal Antibody detects endogenous levels of SCP-3 protein.
<b>Formulation :</b>	Liquid in PBS containing 50% glycerol, 0.5% BSA and 0.02% sodium azide.
<b>Source :</b>	Polyclonal, Rabbit,IgG
<b>Dilution :</b>	WB 1:500-2000;IHC 1:50-300; ELISA 2000-20000
<b>Purification :</b>	The antibody was affinity-purified from rabbit antiserum by affinity-chromatography using epitope-specific immunogen.
<b>Concentration :</b>	1 mg/ml

**Storage Stability :** -15°C to -25°C/1 year(Do not lower than -25°C)

**Observed Band :** 27kD

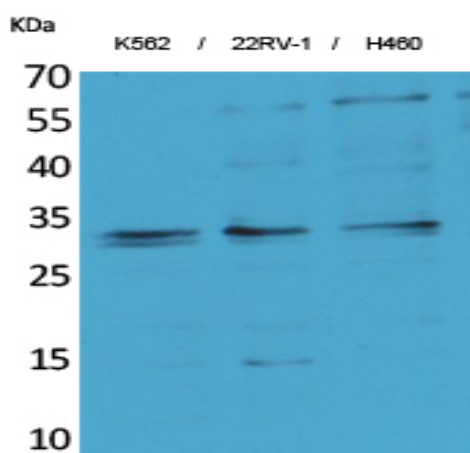
**Background :** This gene encodes an essential structural component of the synaptonemal complex. This complex is involved in synapsis, recombination and segregation of meiotic chromosomes. Mutations in this gene are associated with azoospermia in males and susceptibility to pregnancy loss in females. Alternate splicing results in multiple transcript variants that encode the same protein. [provided by RefSeq, May 2010],

**Function :** disease:Defects in SYCP3 are associated with azoospermia due to perturbations of meiosis [MIM:270960].,function:Component of the transverse filaments of synaptonemal complexes (SCS), formed between homologous chromosomes during meiotic prophase. Has an essential meiotic function in spermatogenesis. May be important for testis development.,similarity:Belongs to the XLR/SYCP3 family.,subcellular location:In tripartite segments of synaptonemal complexes, irrespective of whether these are synapsed or unsynapsed.,subunit:Interacts with SYCP2.,tissue specificity:Testis-specific.,

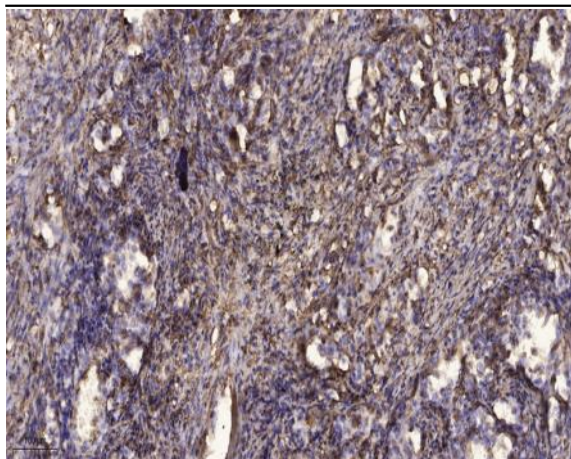
**Subcellular Location :** Nucleus . Chromosome . Chromosome, centromere . It is present in early unpaired cores, in the lateral domains of the synaptonemal complex and in the chromosome cores when they separate at diplotene. It is found axial to the metaphase I chromosomes and in association with pairs of sister centromeres. The centromere-associated protein becomes dissociated from the centromeres at anaphase II and is not found in mitotic metaphase centromeres. .

**Expression :** Testis-specific.

## Products Images



Western Blot analysis of K562, 22RV-1, H460 cells using SCP-3 Polyclonal Antibody. Secondary antibody(catalog#:RS0002) was diluted at 1:20000 cells nucleus extracted by Minute TM Cytoplasmic and Nuclear Fractionation kit (SC-003, Inventbiotech, MN, USA).



Immunohistochemical analysis of paraffin-embedded human Squamous cell carcinoma of lung. 1, Antibody was diluted at 1:200(4° overnight). 2, Tris-EDTA,pH9.0 was used for antigen retrieval. 3,Secondary antibody was diluted at 1:200(room temperature, 45min).