

## Claudin-17 Polyclonal Antibody

<b>Catalog No :</b>	YT5136
<b>Reactivity :</b>	Human;Mouse
<b>Applications :</b>	WB;ELISA
<b>Target :</b>	Claudin-17
<b>Fields :</b>	>>Cell adhesion molecules;>>Tight junction;>>Leukocyte transendothelial migration;>>Pathogenic Escherichia coli infection;>>Hepatitis C
<b>Gene Name :</b>	CLDN17
<b>Protein Name :</b>	Claudin-17
<b>Human Gene Id :</b>	26285
<b>Human Swiss Prot No :</b>	P56750
<b>Mouse Gene Id :</b>	239931
<b>Mouse Swiss Prot No :</b>	Q8BXA6
<b>Immunogen :</b>	Synthesized peptide derived from Claudin-17 . at AA range: 150-230
<b>Specificity :</b>	Claudin-17 Polyclonal Antibody detects endogenous levels of Claudin-17 protein.
<b>Formulation :</b>	Liquid in PBS containing 50% glycerol, 0.5% BSA and 0.02% sodium azide.
<b>Source :</b>	Polyclonal, Rabbit,IgG
<b>Dilution :</b>	WB 1:500 - 1:2000. ELISA: 1:20000. Not yet tested in other applications.
<b>Purification :</b>	The antibody was affinity-purified from rabbit antiserum by affinity-chromatography using epitope-specific immunogen.
<b>Concentration :</b>	1 mg/ml

**Storage Stability :** -15°C to -25°C/1 year(Do not lower than -25°C)

**Observed Band :** 24kD

**Cell Pathway :** Cell adhesion molecules (CAMs);Tight junction;Leukocyte transendothelial migration;

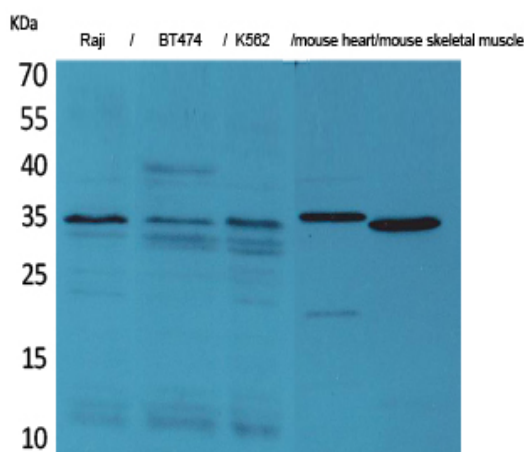
**Background :** This gene encodes a member of the claudin family. Claudins are integral membrane proteins and components of tight junction strands. Tight junction strands serve as a physical barrier to prevent solutes and water from passing freely through the paracellular space between epithelial or endothelial cell sheets, and also play critical roles in maintaining cell polarity and signal transductions. This gene is intronless and is clustered with CLDN8 on chromosome 21q22.11. [provided by RefSeq, Jun 2010],

**Function :** function:Plays a major role in tight junction-specific obliteration of the intercellular space, through calcium-independent cell-adhesion activity.,similarity:Belongs to the claudin family.,

**Subcellular Location :** Cell junction, tight junction . Cell membrane ; Multi-pass membrane protein .

**Expression :** In the kidney, expressed in the proximal tubule and in the Henle's loop. In the distal convoluted tubule, not expressed in all tubules. Not detected in the collecting duct (at protein level).

## Products Images



Western Blot analysis of Raji, BT474, K562, mouse heart, mouse skeletal muscle cells using Claudin-17 Polyclonal Antibody. Secondary antibody(catalog#:RS0002) was diluted at 1:20000