

## ET-1 Polyclonal Antibody

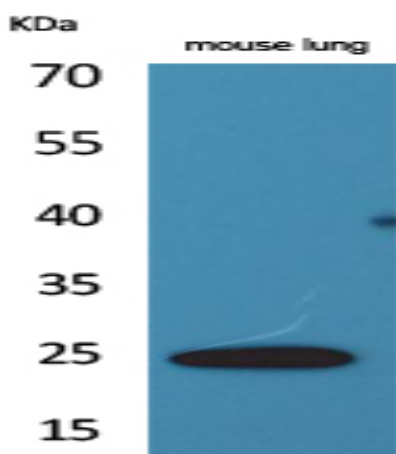
<b>Catalog No :</b>	YT5147
<b>Reactivity :</b>	Human;Rat;Mouse;
<b>Applications :</b>	WB;IHC;IF;ELISA
<b>Target :</b>	ET-1
<b>Fields :</b>	>>cAMP signaling pathway;>>HIF-1 signaling pathway;>>Neuroactive ligand-receptor interaction;>>Vascular smooth muscle contraction;>>TNF signaling pathway;>>Melanogenesis;>>Renin secretion;>>Relaxin signaling pathway;>>AGE-RAGE signaling pathway in diabetic complications;>>Pathways in cancer;>>Hypertrophic cardiomyopathy;>>Fluid shear stress and atherosclerosis
<b>Gene Name :</b>	EDN1
<b>Protein Name :</b>	Endothelin-1
<b>Human Gene Id :</b>	1906
<b>Human Swiss Prot No :</b>	P05305
<b>Mouse Swiss Prot No :</b>	P22387
<b>Immunogen :</b>	The antiserum was produced against synthesized peptide derived from the Internal region of human EDN1. AA range:131-180
<b>Specificity :</b>	ET-1 Polyclonal Antibody detects endogenous levels of ET-1 protein.
<b>Formulation :</b>	Liquid in PBS containing 50% glycerol, 0.5% BSA and 0.02% sodium azide.
<b>Source :</b>	Polyclonal, Rabbit,IgG
<b>Dilution :</b>	IHC: 100-300.WB 1:500 - 1:2000. ELISA: 1:20000.. IF 1:50-200
<b>Purification :</b>	The antibody was affinity-purified from rabbit antiserum by affinity-chromatography using epitope-specific immunogen.

---

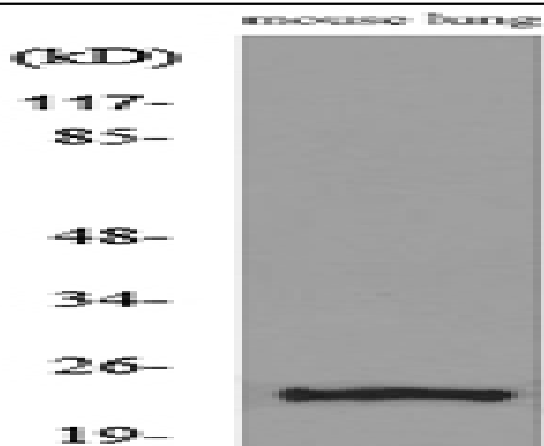
<b>Concentration :</b>	1 mg/ml
<b>Storage Stability :</b>	-15°C to -25°C/1 year(Do not lower than -25°C)
<b>Observed Band :</b>	25kD
<b>Cell Pathway :</b>	Melanogenesis;
<b>Background :</b>	This gene encodes a preproprotein that is proteolytically processed to generate a secreted peptide that belongs to the endothelin/sarafotoxin family. This peptide is a potent vasoconstrictor and its cognate receptors are therapeutic targets in the treatment of pulmonary arterial hypertension. Aberrant expression of this gene may promote tumorigenesis. Alternative splicing results in multiple transcript variants. [provided by RefSeq, Oct 2015],
<b>Function :</b>	function:Endothelins are endothelium-derived vasoconstrictor peptides.,online information:Endothelin entry,similarity:Belongs to the endothelin/sarafotoxin family.,tissue specificity:Expressed in lung, placental stem villi vessels and in cultured placental vascular smooth muscle cells.,
<b>Subcellular Location :</b>	Secreted.
<b>Expression :</b>	Expressed in lung, placental stem villi vessels and in cultured placental vascular smooth muscle cells.

---

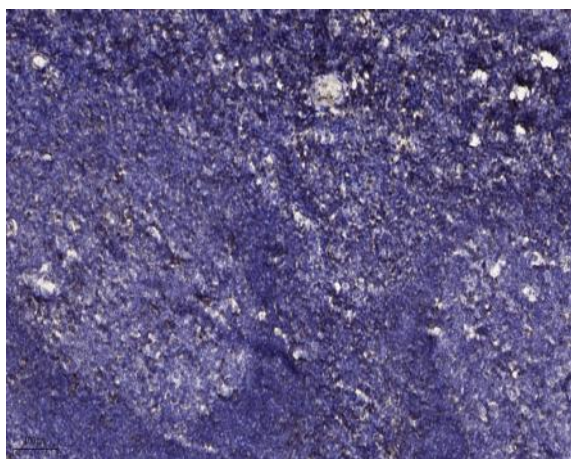
## Products Images



Western Blot analysis of mouse lung cells using ET-1 Polyclonal Antibody. Secondary antibody(catalog#:RS0002) was diluted at 1:20000



Western blot analysis of lysate from mouse lung, using EDN1 Antibody.



Immunohistochemical analysis of paraffin-embedded human tonsil. 1, Antibody was diluted at 1:200(4° overnight). 2, Tris-EDTA,pH9.0 was used for antigen retrieval. 3,Secondary antibody was diluted at 1:200(room temperature, 30min).