

ALPP/ALPPL2 Polyclonal Antibody

Catalog No :	YT5375
Reactivity :	Human;Mouse
Applications :	WB;ELISA
Target :	PLAP
Fields :	>>Thiamine metabolism;>>Folate biosynthesis;>>Metabolic pathways;>>Biosynthesis of cofactors
Gene Name :	ALPP/ALPPL2
Protein Name :	Alkaline phosphatase, placental type/Alkaline phosphatase, placental-like
Human Gene Id :	250/251
Human Swiss Prot No :	P05187/P10696
Mouse Gene Id :	11650
Immunogen :	The antiserum was produced against synthesized peptide derived from the N-terminal region of human ALPP/ALPPL2. AA range:1-50
Specificity :	ALPP/ALPPL2 Polyclonal Antibody detects endogenous levels of ALPP/ALPPL2 protein.
Formulation :	Liquid in PBS containing 50% glycerol, 0.5% BSA and 0.02% sodium azide.
Source :	Polyclonal, Rabbit,IgG
Dilution :	WB 1:500 - 1:2000. ELISA: 1:20000. Not yet tested in other applications.
Purification :	The antibody was affinity-purified from rabbit antiserum by affinity-chromatography using epitope-specific immunogen.
Concentration :	1 mg/ml

Storage Stability : -15°C to -25°C/1 year (Do not lower than -25°C)

Observed Band : 60kD

Cell Pathway : Folate biosynthesis;

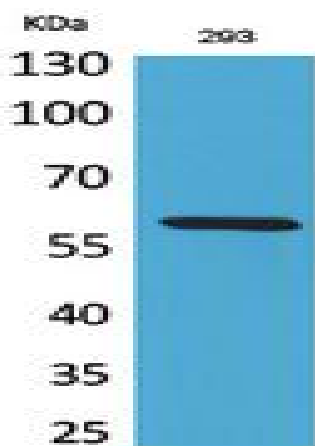
Background : The protein encoded by this gene is an alkaline phosphatase, a metalloenzyme that catalyzes the hydrolysis of phosphoric acid monoesters. It belongs to a multigene family composed of four alkaline phosphatase isoenzymes. The enzyme functions as a homodimer and has a catalytic site containing one magnesium and two zinc ions, which are required for its enzymatic function. The protein is primarily expressed in placental and endometrial tissue; however, strong ectopic expression has been detected in ovarian adenocarcinoma, serous cystadenocarcinoma, and other ovarian cancer cells. [provided by RefSeq, Jan 2015],

Function : catalytic activity: A phosphate monoester + H₂O = an alcohol + phosphate., cofactor: Binds 1 magnesium ion., cofactor: Binds 2 zinc ions., miscellaneous: In most mammals there are four different isozymes: placental, placental-like, intestinal and tissue non-specific (liver/bone/kidney)., online information: Alkaline phosphatase entry, polymorphism: Placental ALP is highly polymorphic, there are at least three common alleles., similarity: Belongs to the alkaline phosphatase family., subunit: Homodimer.,

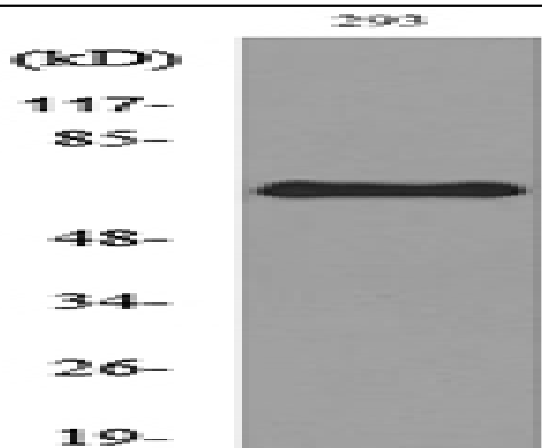
Subcellular Location : Cell membrane; Lipid-anchor, GPI-anchor .

Expression : Detected in placenta (at protein level).

Products Images



Western Blot analysis of 293 cells using ALPP/ALPPL2 Polyclonal Antibody. Antibody was diluted at 1:2000. Secondary antibody (catalog#: RS0002) was diluted at 1:20000



Western blot analysis of lysate from 293 cells, using ALPP/ALPPL2 Antibody.