

Glut5 Polyclonal Antibody

Catalog No :	YT5388
Reactivity :	Human;Rat;Mouse;
Applications :	WB;ELISA
Target :	Glut5
Fields :	>>Carbohydrate digestion and absorption
Gene Name :	SLC2A5
Protein Name :	Solute carrier family 2 facilitated glucose transporter member 5
Human Gene Id :	6518
Human Swiss Prot No :	P22732
Mouse Swiss Prot No :	Q9WV38
Immunogen :	The antiserum was produced against synthesized peptide derived from the N-terminal region of human SLC2A5. AA range:31-80
Specificity :	Glut5 Polyclonal Antibody detects endogenous levels of Glut5 protein.
Formulation :	Liquid in PBS containing 50% glycerol, 0.5% BSA and 0.02% sodium azide.
Source :	Polyclonal, Rabbit,IgG
Dilution :	WB 1:500 - 1:2000. ELISA: 1:20000. Not yet tested in other applications.
Purification :	The antibody was affinity-purified from rabbit antiserum by affinity-chromatography using epitope-specific immunogen.
Concentration :	1 mg/ml
Storage Stability :	-15°C to -25°C/1 year(Do not lower than -25°C)

Observed Band : 55kD

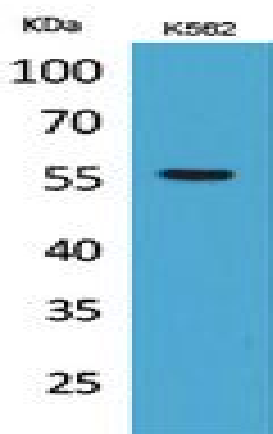
Background : The protein encoded by this gene is a fructose transporter responsible for fructose uptake by the small intestine. The encoded protein also is necessary for the increase in blood pressure due to high dietary fructose consumption. [provided by RefSeq, Jun 2016],

Function : function:Cytochalasin B-sensitive carrier. Seems to function primarily as a fructose transporter.,induction:By forskolin (in Caco-2 cells),,mass spectrometry: PubMed:11840567,similarity:Belongs to the major facilitator superfamily. Sugar transporter (TC 2.A.1.1) family. Glucose transporter subfamily.,tissue specificity:Expressed in small intestine, and at much lower levels in kidney, skeletal muscle, and adipose tissue.,

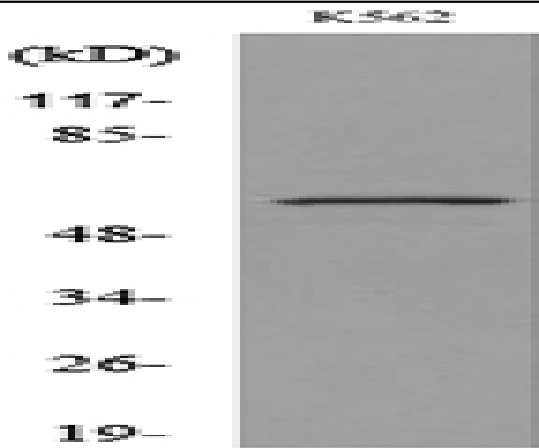
Subcellular Location : Apical cell membrane ; Multi-pass membrane protein . Cell membrane ; Multi-pass membrane protein . Cell membrane, sarcolemma . Localized on the apical membrane of jejunum villi, but also on lateral plasma membranes of the villi. Transport to the cell membrane is dependent on RAB11A. .

Expression : Detected in skeletal muscle, and in jejunum brush border membrane and basolateral membrane (at protein level) (PubMed:7619085). Expressed in small intestine, and at much lower levels in kidney, skeletal muscle, and adipose tissue.

Products Images



Western Blot analysis of K562 cells using Glut5 Polyclonal Antibody. Secondary antibody(catalog#:RS0002) was diluted at 1:20000



Western blot analysis of lysate from K562 cells, using SLC2A5 Antibody.