

## TFPI-2 Polyclonal Antibody

<b>Catalog No :</b>	YT5159
<b>Reactivity :</b>	Human;Mouse
<b>Applications :</b>	WB;ELISA
<b>Target :</b>	TFPI-2
<b>Gene Name :</b>	TFPI2
<b>Protein Name :</b>	Tissue factor pathway inhibitor 2
<b>Human Gene Id :</b>	7980
<b>Human Swiss Prot No :</b>	P48307
<b>Mouse Swiss Prot No :</b>	O35536
<b>Immunogen :</b>	The antiserum was produced against synthesized peptide derived from the C-terminal region of human TFPI2. AA range:186-235
<b>Specificity :</b>	TFPI-2 Polyclonal Antibody detects endogenous levels of TFPI-2 protein.
<b>Formulation :</b>	Liquid in PBS containing 50% glycerol, 0.5% BSA and 0.02% sodium azide.
<b>Source :</b>	Polyclonal, Rabbit,IgG
<b>Dilution :</b>	WB 1:500 - 1:2000. ELISA: 1:20000. Not yet tested in other applications.
<b>Purification :</b>	The antibody was affinity-purified from rabbit antiserum by affinity-chromatography using epitope-specific immunogen.
<b>Concentration :</b>	1 mg/ml
<b>Storage Stability :</b>	-15°C to -25°C/1 year(Do not lower than -25°C)
<b>Observed Band :</b>	13kD

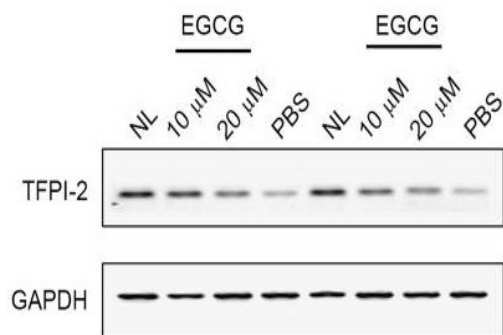
**Background :** This gene encodes a member of the Kunitz-type serine proteinase inhibitor family. The protein can inhibit a variety of serine proteases including factor VIIa/tissue factor, factor Xa, plasmin, trypsin, chymotrypsin and plasma kallikrein. This gene has been identified as a tumor suppressor gene in several types of cancer. Alternative splicing results in multiple transcript variants. [provided by RefSeq, Aug 2012],

**Function :** domain:This inhibitor contains three inhibitory domains.,function:May play a role in the regulation of plasmin-mediated matrix remodeling. Inhibits trypsin, plasmin, factor VIIa/tissue factor and weakly factor Xa. Has no effect on thrombin.,similarity:Contains 2 BPTI/Kunitz inhibitor domains.,similarity:Contains 3 BPTI/Kunitz inhibitor domains.,tissue specificity:Umbilical vein endothelial cells, liver, placenta, heart, pancreas, and maternal serum at advanced pregnancy.,

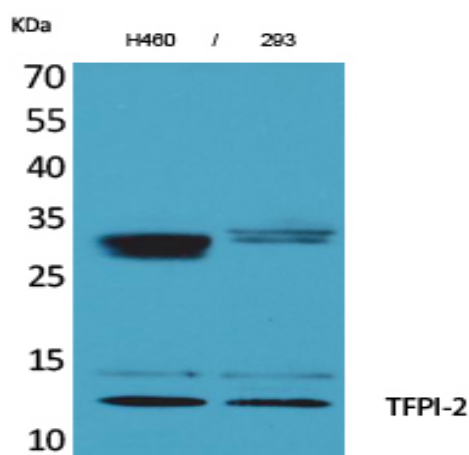
**Subcellular Location :** Secreted.

**Expression :** Umbilical vein endothelial cells, liver, placenta, heart, pancreas, and maternal serum at advanced pregnancy.

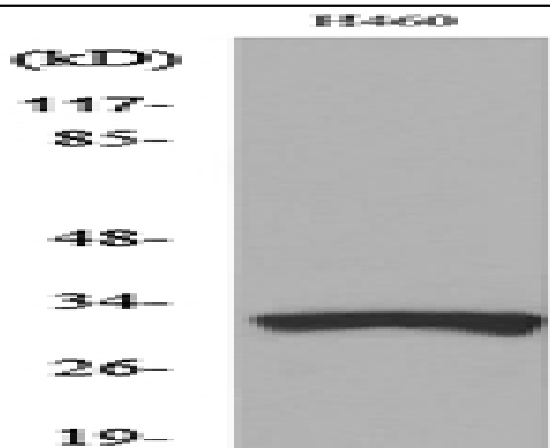
## Products Images



Feng, Chenchen, et al. "Epigallocatechin gallate inhibits the growth and promotes the apoptosis of bladder cancer cells." *Experimental and therapeutic medicine* 14.4 (2017): 3513-3518.



Western Blot analysis of H460, 293 cells using TFPI-2 Polyclonal Antibody. Secondary antibody(catalog#:RS0002) was diluted at 1:20000



Western blot analysis of lysate from H460 cells, using TFPI2 Antibody.