

Cerberus Polyclonal Antibody

Catalog No :	YT5410
Reactivity :	Human;Rat
Applications :	WB;IHC;IF;ELISA
Target :	Cerberus
Fields :	>>Wnt signaling pathway
Gene Name :	CER1
Protein Name :	Cerberus
Human Gene Id :	9350
Human Swiss Prot No :	O95813
Mouse Gene Id :	12622
Mouse Swiss Prot No :	O55233
Immunogen :	The antiserum was produced against synthesized peptide derived from the Internal region of human CER1. AA range:91-140
Specificity :	Cerberus Polyclonal Antibody detects endogenous levels of Cerberus protein.
Formulation :	Liquid in PBS containing 50% glycerol, 0.5% BSA and 0.02% sodium azide.
Source :	Polyclonal, Rabbit,IgG
Dilution :	WB 1:500 - 1:2000. IHC: 1:100-1:300. ELISA: 1:20000.. IF 1:50-200
Purification :	The antibody was affinity-purified from rabbit antiserum by affinity-chromatography using epitope-specific immunogen.
Concentration :	1 mg/ml

Storage Stability : -15°C to -25°C/1 year(Do not lower than -25°C)

Observed Band : 30kD

Cell Pathway : WNT;WNT-T CELL

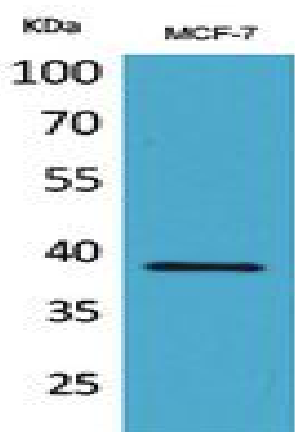
Background : This gene encodes a cytokine member of the cysteine knot superfamily, characterized by nine conserved cysteines and a cysteine knot region. The cerberus-related cytokines, together with Dan and DRM/Gremlin, represent a group of bone morphogenetic protein (BMP) antagonists that can bind directly to BMPs and inhibit their activity. [provided by RefSeq, Jul 2008],

Function : function:Cytokine that may play a role in anterior neural induction and somite formation during embryogenesis in part through a BMP-inhibitory mechanism. Can regulate Nodal signaling during gastrulation as well as the formation and patterning of the primitive streak.,PTM:N-glycosylated.,sequence caution:Translated as Ser.,similarity:Belongs to the DAN family.,similarity:Contains 1 CTCK (C-terminal cystine knot-like) domain.,subunit:Forms monomers and predominantly dimers.,

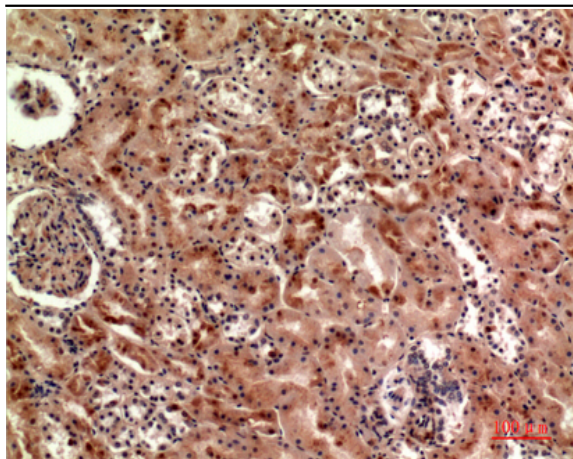
Subcellular Location : Secreted .

Expression : Blood,PCR rescued clones,

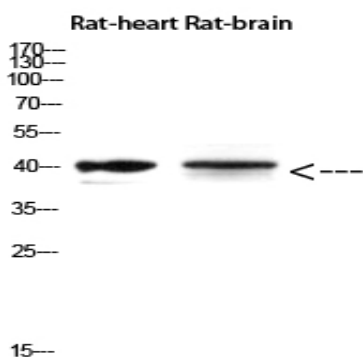
Products Images



Western Blot analysis of MCF-7 cells using Cerberus Polyclonal Antibody. Antibody was diluted at 1:500. Secondary antibody(catalog#:RS0002) was diluted at 1:20000



Immunohistochemical analysis of paraffin-embedded human-kidney, antibody was diluted at 1:100



Western Blot analysis of Rat-heart Rat-brain using Cerberus Polyclonal Antibody diluted at 1:500. Secondary antibody(catalog#:RS0002) was diluted at 1:20000