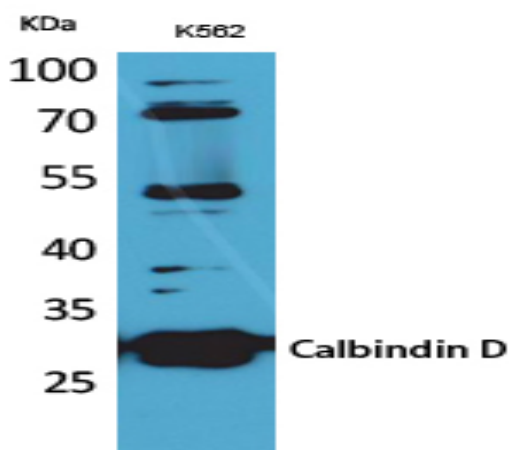


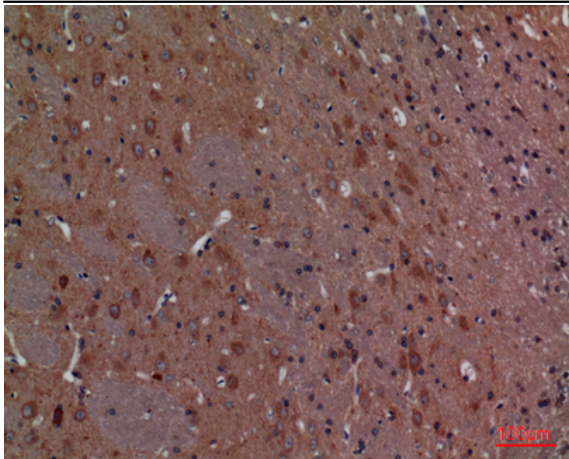
## Calbindin D28K Polyclonal Antibody

<b>Catalog No :</b>	YT5209
<b>Reactivity :</b>	Human;Mouse;Rat
<b>Applications :</b>	WB;IHC;IF;ELISA
<b>Target :</b>	Calbindin D28K
<b>Fields :</b>	>>Endocrine and other factor-regulated calcium reabsorption
<b>Gene Name :</b>	CALB1
<b>Protein Name :</b>	Calbindin
<b>Human Gene Id :</b>	793
<b>Human Swiss Prot No :</b>	P05937
<b>Mouse Gene Id :</b>	12307
<b>Mouse Swiss Prot No :</b>	P12658
<b>Rat Gene Id :</b>	83839
<b>Rat Swiss Prot No :</b>	P07171
<b>Immunogen :</b>	The antiserum was produced against synthesized peptide derived from the C-terminal region of human CALB1. AA range:191-240
<b>Specificity :</b>	Calbindin D28K Polyclonal Antibody detects endogenous levels of Calbindin D28K protein.
<b>Formulation :</b>	Liquid in PBS containing 50% glycerol, 0.5% BSA and 0.02% sodium azide.
<b>Source :</b>	Polyclonal, Rabbit,IgG
<b>Dilution :</b>	WB 1:500 - 1:2000. IHC: 1:100-300 ELISA: 1:20000.. IF 1:50-200

<b>Purification :</b>	The antibody was affinity-purified from rabbit antiserum by affinity-chromatography using epitope-specific immunogen.
<b>Concentration :</b>	1 mg/ml
<b>Storage Stability :</b>	-15°C to -25°C/1 year(Do not lower than -25°C)
<b>Observed Band :</b>	30kD
<b>Background :</b>	The protein encoded by this gene is a member of the calcium-binding protein superfamily that includes calmodulin and troponin C. Originally described as a 27 kDa protein, it is now known to be a 28 kDa protein. It contains four active calcium-binding domains, and has two modified domains that are thought to have lost their calcium binding capability. This protein is thought to buffer entry of calcium upon stimulation of glutamate receptors. Depletion of this protein was noted in patients with Huntington disease. [provided by RefSeq, Jan 2015],
<b>Function :</b>	domain:This protein has four functional calcium-binding sites; potential sites II and VI have lost affinity for calcium.,function:Buffers cytosolic calcium. May stimulate a membrane Ca(2+)-ATPase and a 3',5'-cyclic nucleotide phosphodiesterase.,online information:Calbindin entry,similarity:Belongs to the calbindin family.,similarity:Contains 5 EF-hand domains.,subunit:Interacts with RANBP9.,
<b>Subcellular Location :</b>	nucleus,cytosol,axon,dendrite,neuronal cell body,terminal bouton,synapse,extracellular exosome,
<b>Expression :</b>	Brain,Cerebellum,Kidney,Lung,Substantia nigra,

## Products Images





Immunohistochemical analysis of paraffin-embedded rat-brain,  
antibody was diluted at 1:100