

## Fascin 1 Polyclonal Antibody

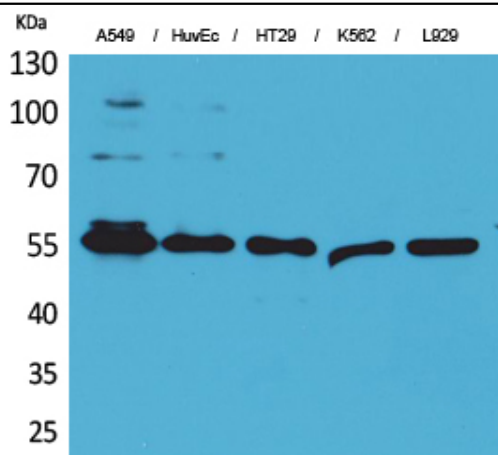
<b>Catalog No :</b>	YT5212
<b>Reactivity :</b>	Human;Mouse;Rat
<b>Applications :</b>	WB;IHC;IF;ELISA
<b>Target :</b>	Fascin
<b>Fields :</b>	>>MicroRNAs in cancer
<b>Gene Name :</b>	FSCN1
<b>Protein Name :</b>	Fascin
<b>Human Gene Id :</b>	6624
<b>Human Swiss Prot No :</b>	Q16658
<b>Mouse Gene Id :</b>	14086
<b>Mouse Swiss Prot No :</b>	Q61553
<b>Rat Gene Id :</b>	683788
<b>Rat Swiss Prot No :</b>	P85845
<b>Immunogen :</b>	The antiserum was produced against synthesized peptide derived from the Internal region of human FSCN1. AA range:261-310
<b>Specificity :</b>	Fascin 1 Polyclonal Antibody detects endogenous levels of Fascin 1 protein.
<b>Formulation :</b>	Liquid in PBS containing 50% glycerol, 0.5% BSA and 0.02% sodium azide.
<b>Source :</b>	Polyclonal, Rabbit,IgG
<b>Dilution :</b>	WB 1:500 - 1:2000. IHC: 1:100-300 ELISA: 1:20000.. IF 1:50-200

---

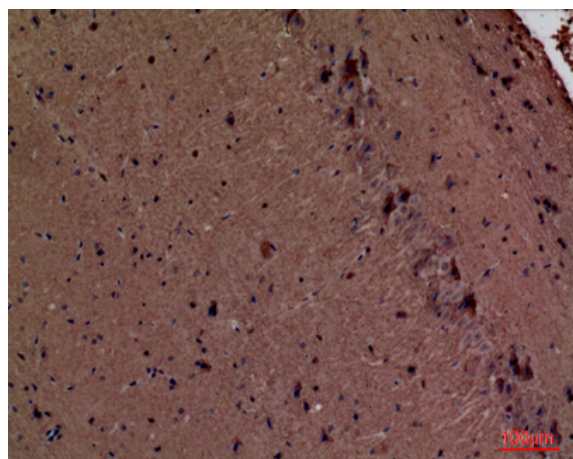
<b>Purification :</b>	The antibody was affinity-purified from rabbit antiserum by affinity-chromatography using epitope-specific immunogen.
<b>Concentration :</b>	1 mg/ml
<b>Storage Stability :</b>	-15°C to -25°C/1 year(Do not lower than -25°C)
<b>Observed Band :</b>	55kD
<b>Background :</b>	This gene encodes a member of the fascin family of actin-binding proteins. Fascin proteins organize F-actin into parallel bundles, and are required for the formation of actin-based cellular protrusions. The encoded protein plays a critical role in cell migration, motility, adhesion and cellular interactions. Expression of this gene is known to be regulated by several microRNAs, and overexpression of this gene may play a role in the metastasis of multiple types of cancer by increasing cell motility. Expression of this gene is also a marker for Reed-Sternberg cells in Hodgkin's lymphoma. A pseudogene of this gene is located on the long arm of chromosome 15. [provided by RefSeq, Sep 2011],
<b>Function :</b>	disease:Marks and mediates breast cancer metastasis to the lungs. FSCN1 is not functionally validated but achieves the highest statistical significance (P less than 0.000001). Those subjects expressing the lung metastasis signature have a significantly poorer lung metastasis-free survival, but not bone metastasis-free survival, compared to subjects without the signature.,function:Organizes filamentous actin into bundles with a minimum of 4.1:1 actin/fascin ratio. Probably involved in the assembly of actin filament bundles present in microspikes, membrane ruffles, and stress fibers.,PTM:Phosphorylation on Ser-39 inhibits the actin-binding ability of fascin.,similarity:Belongs to the fascin family.,subunit:Associates with beta-catenin.,tissue specificity:Ubiquitous.,
<b>Subcellular Location :</b>	Cytoplasm, cytosol . Cytoplasm, cell cortex . Cytoplasm, cytoskeleton . Cytoplasm, cytoskeleton, stress fiber . Cell projection, filopodium . Cell projection, invadopodium . Cell projection, microvillus . Cell junction . Colocalized with RUFY3 and F-actin at filipodia of the axonal growth cone. Colocalized with DBN1 and F-actin at the transitional domain of the axonal growth cone (By similarity). .
<b>Expression :</b>	Ubiquitous.

---

## Products Images



Western Blot analysis of A549, HuvEc, HT29, K562, L929 cells using Fascin 1 Polyclonal Antibody. Secondary antibody(catalog#:RS0002) was diluted at 1:20000



Immunohistochemical analysis of paraffin-embedded mouse-brain, antibody was diluted at 1:100