

EP1 Polyclonal Antibody

Catalog No :	YT5447
Reactivity :	Human;Rat;Mouse;
Applications :	WB;ELISA
Target :	EP1
Fields :	>>Calcium signaling pathway;>>Neuroactive ligand-receptor interaction;>>Human cytomegalovirus infection;>>Pathways in cancer
Gene Name :	PTGER1
Protein Name :	Prostaglandin E2 receptor EP1 subtype
Human Gene Id :	5731
Human Swiss Prot No :	P34995
Mouse Swiss Prot No :	P35375
Immunogen :	The antiserum was produced against synthesized peptide derived from the Internal region of human PTGER1. AA range:191-240
Specificity :	EP1 Polyclonal Antibody detects endogenous levels of EP1 protein.
Formulation :	Liquid in PBS containing 50% glycerol, 0.5% BSA and 0.02% sodium azide.
Source :	Polyclonal, Rabbit,IgG
Dilution :	WB 1:500 - 1:2000. ELISA: 1:20000. Not yet tested in other applications.
Purification :	The antibody was affinity-purified from rabbit antiserum by affinity-chromatography using epitope-specific immunogen.
Concentration :	1 mg/ml
Storage Stability :	-15°C to -25°C/1 year(Do not lower than -25°C)

Observed Band : 44kD

Cell Pathway : Calcium;Neuroactive ligand-receptor interaction;

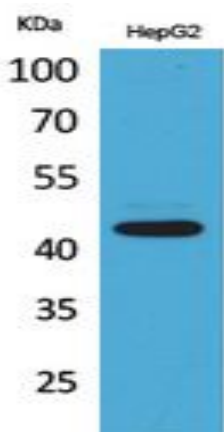
Background : The protein encoded by this gene is a member of the G protein-coupled receptor family. This protein is one of four receptors identified for prostaglandin E2 (PGE2). Through a phosphatidylinositol-calcium second messenger system, G-Q proteins mediate this receptor's activity. Knockout studies in mice suggested a role of this receptor in mediating algesia and in regulation of blood pressure. Studies in mice also suggested that this gene may mediate adrenocorticotrophic hormone response to bacterial endotoxin. [provided by RefSeq, Jul 2008],

Function : function:Receptor for prostaglandin E2 (PGE2). The activity of this receptor is mediated by G(q) proteins which activate a phosphatidylinositol-calcium second messenger system. May play a role as an important modulator of renal function. Implicated the smooth muscle contractile response to PGE2 in various tissues.,PTM:Phosphorylated .,similarity:Belongs to the G-protein coupled receptor 1 family.,tissue specificity:Abundant in kidney. Lower level expression in lung, skeletal muscle and spleen, lowest expression in testis and not detected in liver brain and heart.,

Subcellular Location : Cell membrane; Multi-pass membrane protein.

Expression : Abundant in kidney. Lower level expression in lung, skeletal muscle and spleen, lowest expression in testis and not detected in liver brain and heart.

Products Images



Western Blot analysis of HepG2 cells using EP1 Polyclonal Antibody. Secondary antibody(catalog#:RS0002) was diluted at 1:20000